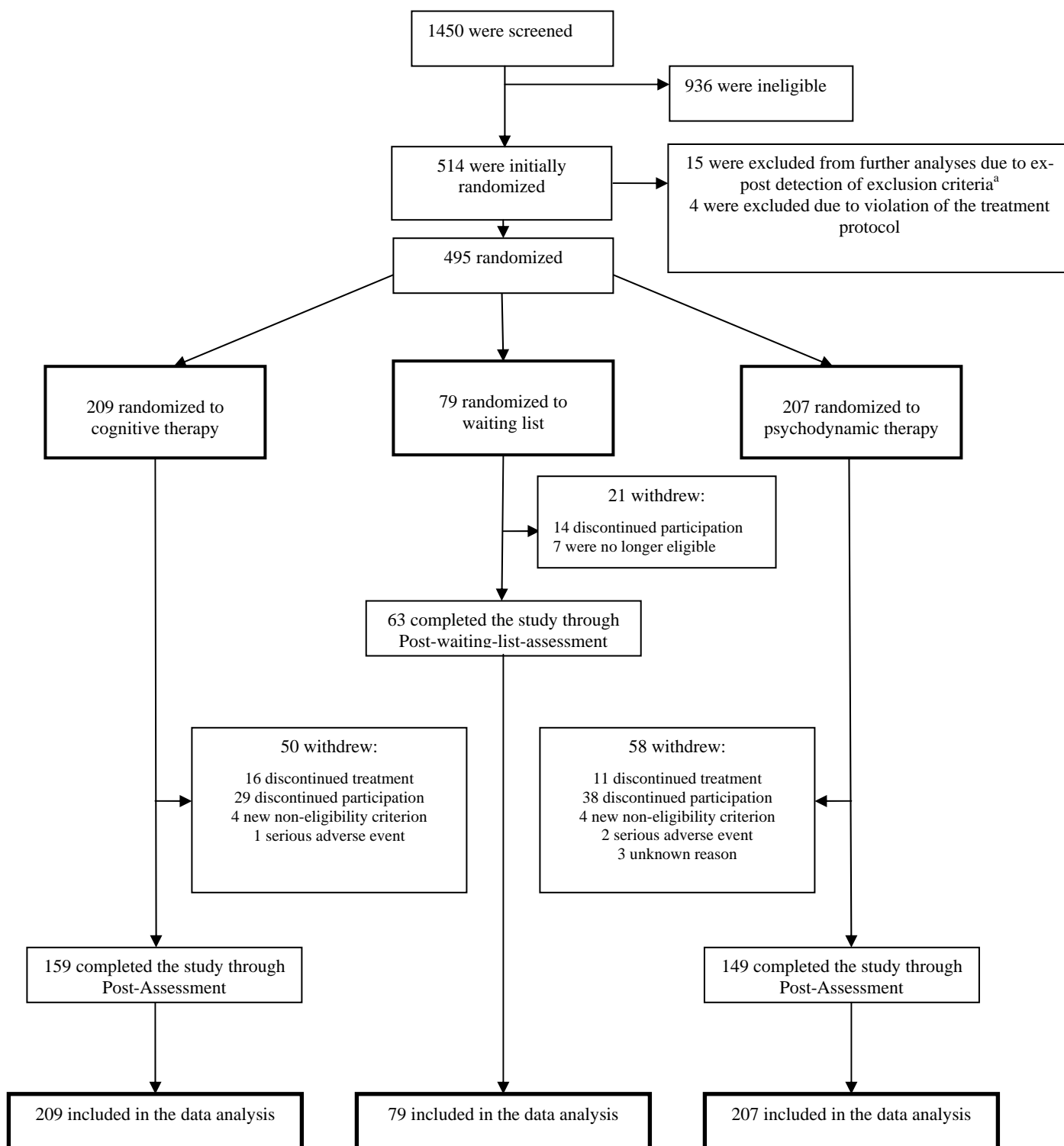


FIGURE S1. Enrollment and Outcomes



^a The reasons for the 15 exclusions were as follows: in cognitive therapy (N=7): social phobia was not the primary diagnosis (N=2), substance-related disorders (N=3), antidepressant medication (N=1), borderline personality disorder (N=1); in psychodynamic therapy (N=7): use of benzodiazepine (N=1), brain cancer (N=1), schizophrenia, schizotypal, or delusional disorders (N=3), substance-related disorders (N=2); and in waiting list: (N=1) an eating disorder was the primary diagnosis.