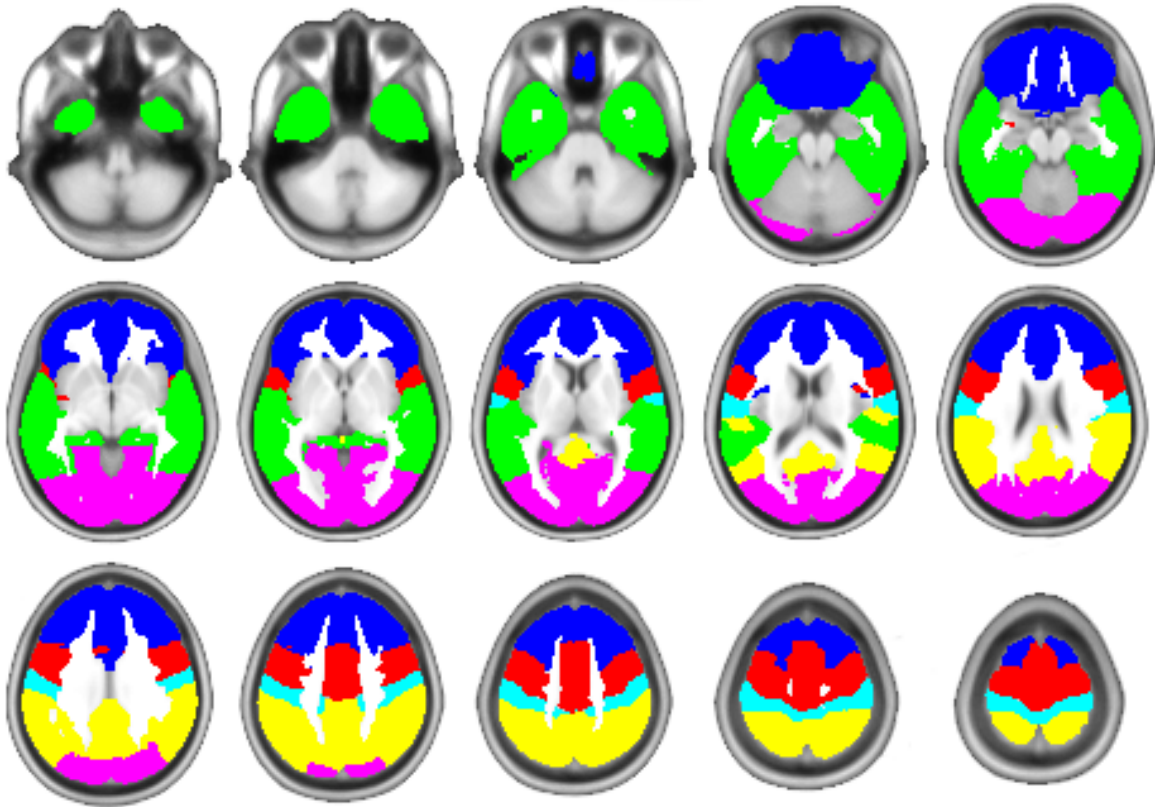


Supplemental Figure 1. Cortical regions-of-interest overlaid on the standard MNI152 template brain. Regions-of-interest were used as seeds in the functional connectivity analysis. Regions-of-interest are color coded as follows: blue=prefrontal cortex; red=motor/supplementary motor area; cyan=somatosensory cortex; green=temporal lobe; yellow=posterior parietal cortex; purple=occipital cortex.



Supplemental Figure 2. Changes in thalamocortical functional connectivity in schizophrenia are not due to group differences in the proportion of subjects scanned on the two MRI scanners. The between groups analysis of thalamocortical functional connectivity was repeated with scanner included as covariate, in addition to age. As shown in Panel D, the results are virtually identical to the main analysis shown in Figure 1D. Images thresholded at $p=.05$ (cluster-wise corrected) for voxel-wise $p=.001$.

