

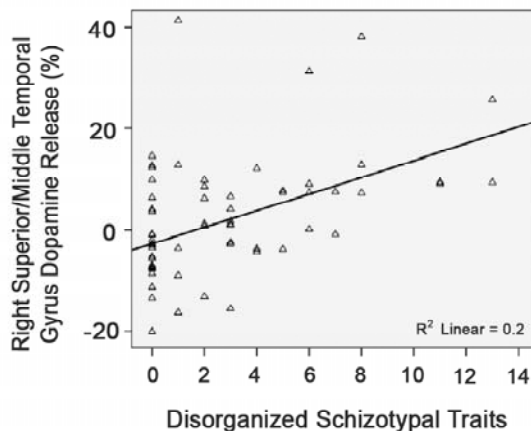
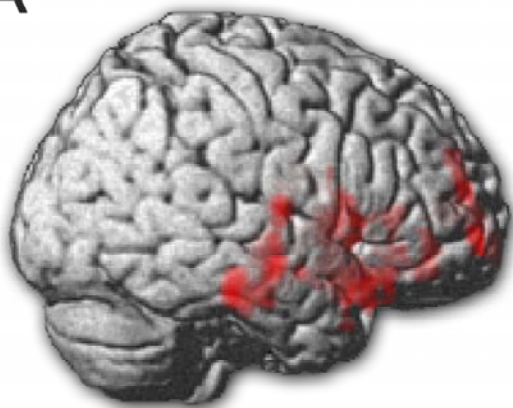
TABLE S1. Baseline BPND and Dopamine Release in Striatal and Extrastriatal Regions of Interest

	BP_{ND}		ΔBP_{ND} (%)		One Sample T-Test		
	Mean	SD	Mean	SD	df	t	p
Whole Striatum	18.72	3.17	6.18	5.25	62	9.33	<.001
Ventral	20.23	3.67	6.16	6.38	62	7.66	<.001
Associative	17.02	2.78	4.77	5.60	62	6.76	<.001
Sensorimotor	20.09	3.46	8.11	5.46	62	11.80	<.001
Amygdala	1.88	0.32	1.52	7.57	62	1.59	.117
Hippocampus	1.02	0.11	2.25	9.73	62	1.83	.072
Thalamus	2.53	0.29	2.50	5.37	62	3.69	<.001

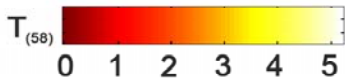
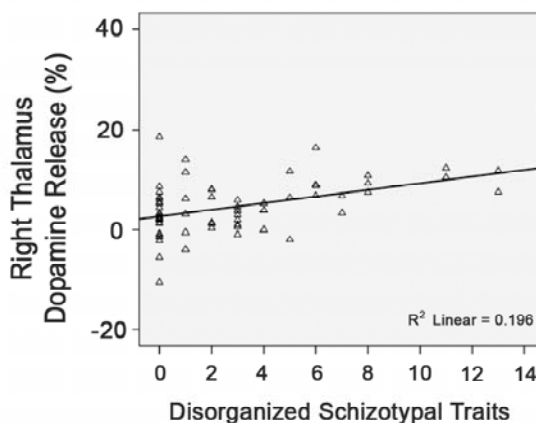
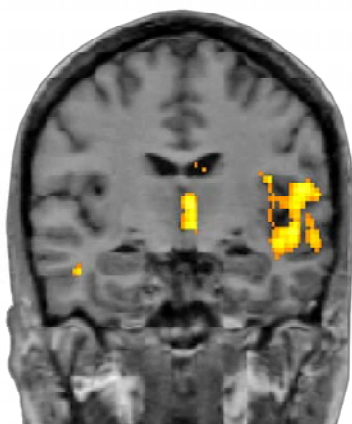
[See next page for Figure S1]

FIGURE S1. Correlation between disorganized schizotypal traits and dopamine release. Disorganized traits correlated with dopamine release in the (A) lateral temporal lobe, (B) thalamus, and (C) bilateral insula. Statistical parametric maps thresholded at $p=0.05$ (whole brain cluster-level corrected).

A



B



C

