

Subscribe today to APA's high-ranking
mental health policy
and services journal!

Psychiatric Services

Don't miss the February issue:

- Smoking: a risk factor for suicide?
- Effects of burnout on clinicians' work
- Ensuring accuracy of EMR data in research

Coming in the March issue:

- Using patient-reported outcome measures
- Schizophrenia-related disability in China
- Collaborative care reduces antidepressant side effects

One low price covers your print and online subscription.

\$107 APA member print and online subscription.

\$ 97 APA member online-only subscription.

Don't miss another issue of *Psychiatric Services*.

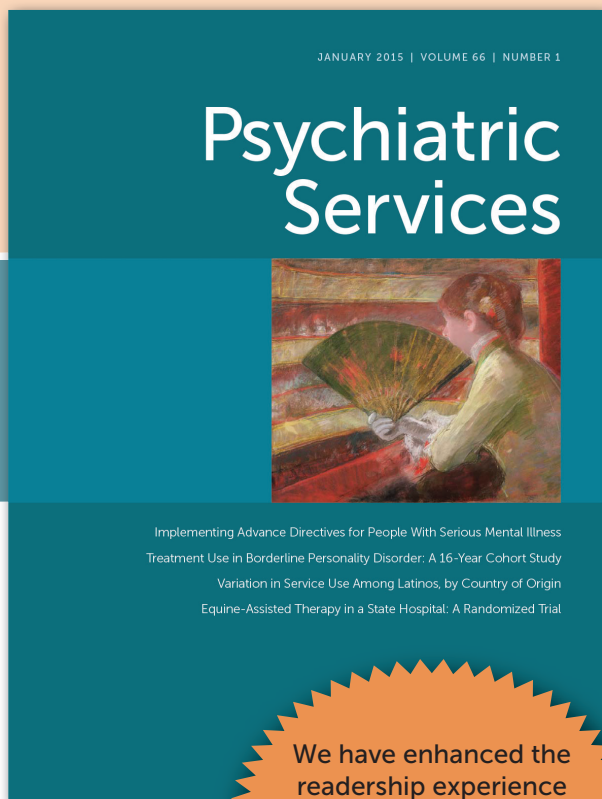
Subscribe today, visit www.appi.org or call Customer Service at 1-800-368-5777

ps.psychiatryonline.org



www.appi.org • 1-800-368-5777 • Fax: 703-907-1091 • Email: appi@psych.org

Priority Code AH1501Feb



Implementing Advance Directives for People With Serious Mental Illness
Treatment Use in Borderline Personality Disorder: A 16-Year Cohort Study
Variation in Service Use Among Latinos, by Country of Origin
Equine-Assisted Therapy in a State Hospital: A Randomized Trial

We have enhanced the
readership experience
of *Psychiatric Services*
with a bold new look
and engaging features!

Subscription and Business Information

The American Journal of Psychiatry, ISSN 0002-953X, is published monthly by the American Psychiatric Association.

The American Psychiatric Association does not hold itself responsible for statements made in its publications by contributors or advertisers. Unless so stated, material in *The American Journal of Psychiatry* does not reflect the endorsement, official attitude, or position of the American Psychiatric Association or of the Journal's Editorial Board.

Periodicals postage paid at Arlington, VA, and additional mailing offices. POSTMASTER: Send address changes to *The American Journal of Psychiatry*, Circulation Department, American Psychiatric Association, 1000 Wilson Blvd., Suite 1825, Arlington, VA 22209-3901.

Editorial Office

American Journal of Psychiatry
American Psychiatric Association
1000 Wilson Blvd., Suite 1825
Arlington, VA 22209-3901
Phone: (703) 907-7885, (703) 907-7889
E-mail: ajp@psych.org

Customer Service

Phone: (800) 368-5777 (tollfree)
E-mail: appi@psych.org

APA Member Subscription Services

Phone: (888) 35-PSYCH (tollfree)

Subscriptions

Per year: individual \$285.00,
international \$429.00

Institutional subscriptions are tier priced. For institutional site license or pricing information, contact (703) 907-8538 or institutions@psych.org.

Additional subscription options, including single issues and student rates

Contact Customer Service

Advertising

Pharmaceutical Print and Online Advertising
Frank Cox, Kathleen Harrison, Tim Wolfinger
Pharmaceutical Media, Inc.
30 East 33rd Street
New York, NY 10016
Phone: (212) 904-0379
E-mail: twolfinger@pminy.com

Nonpharmaceutical and Online Sales

Eamon Woods
Pharmaceutical Media, Inc.
E-mail: ewoods@pminy.com
(see address and phone above).

Permissions and Reprints

Material published in the journals of the American Psychiatric Association and American Psychiatric Publishing is protected by copyright and all rights are reserved. Material may not be reproduced in any form or by any means without written permission from the copyright owner. For permission to reproduce material published by APA, please visit <http://www.appi.org/CustomerService/Pages/Permissions.aspx> for more information. Permission can also be secured through the Copyright Clearance Center (www.copyright.com).

APA does not require that permission be obtained for the photocopying of isolated articles for nonprofit classroom or library reserve use; all fees associated with such permission are waived. This consent does not extend to other kinds of copying, such as copying for general distribution, for advertising or promotional purposes, for creating new collective works, or for resale. Requests for commercial distribution should be directed to (703) 907-7875.

For bulk reprints, please contact Cecilia Stoute, (703) 907-8547; e-mail: cstoute@psych.org.

Indexed in Abstracts for Social Workers, Academic Abstracts, Biological Abstracts, Chemical Abstracts, Chicago Psychoanalytic Literature Index, Cumulative Index to Nursing Literature, Excerpta Medica, Hospital Literature Index, Index Medicus, International Nursing Index, Nutrition Abstracts, Psychological Abstracts, Science Citation Index, Social Science Source, and Social Sciences Index.

Pages are produced by Dartmouth Journal Services, Waterbury, VT, and printed by Dartmouth Printing Company, Hanover, NH, on acid-free paper effective with Volume 169, Number 1, January 2012.

© 2015 American Psychiatric Association.



AMERICAN PSYCHIATRIC ASSOCIATION 168TH ANNUAL MEETING

Toronto, Canada • May 16-20, 2015

Join colleagues from across the U.S. and around the world for the psychiatry event of the year!

Why You Should Attend:

- ▶ Discover cutting-edge science and new therapies.
- ▶ Learn from renowned leaders in science and health policy.
- ▶ Connect with your peers and expand your professional network.
- ▶ Earn your annual licensure CME credit at one meeting!
- ▶ Explore the Exhibit Hall for innovative treatment options and new technologies.



14,000
Attendees



400
Scientific Program
Sessions



200
Exhibitors



42
Courses



Up to 50
CMEs*

**The APA designates this live activity, the 168th Annual Meeting, for a maximum of 50 AMA PRA Category 1 Credits™.*



 Join: #APAAM15

To register online, visit psychiatry.org/annualmeeting

Psychiatrist - Wisconsin

Inpatient/Outpatient

HealthPartners Medical Group is a top Upper Midwest multispecialty physician practice based in Minnesota and western Wisconsin. Our award-winning Behavioral Health team is 25+ psychiatrists-strong and focused in multidisciplinary inpatient and outpatient settings. Together with social workers, nurses, PAs, therapists and OTs, we provide exceptional care to our community and are dedicated to the health and well-being of our patients.

We have an exciting full-time opportunity for a talented and caring BC/BE Psychiatrist to join our group at the Amery Regional Medical Center (ARMC) in beautiful Amery, Wisconsin. This key position provides direct inpatient and outpatient care as part of our psychiatric treatment program at ARMC and nearby care sites. Leadership and other practice growth opportunities are available.

ARMC is a progressive western Wisconsin community hospital located about an hour east of the Minneapolis/St. Paul metropolitan area. The Amery community offers the variety of a bigger city with a sense of hometown hospitality. With an excellent school system and abundant sporting/outdoor/recreational offerings, Amery is an ideal place to put down family and practice roots. For hospital and community information, visit www.amerymedicalcenter.org and www.amerywisconsin.org.

HealthPartners offers a competitive compensation and benefits package, paid malpractice coverage and a rewarding practice environment with support from our Twin Cities-based group. For consideration, please apply online at healthpartners.com/careers, forward your CV and cover letter to lori.m.fake@healthpartners.com, or call Lori at (800) 472-4695 x1. EOE



healthpartners.com



Intermountain Healthcare has openings for Psychiatrists:

Adult Outpatient - Logan, UT
Adult Outpatient - Ogden, UT
Adult Inpatient & Outpatient - Provo, UT
Adult Outpatient - Salt Lake City, UT
Adult Outpatient - St. George, UT

Employment with Intermountain Medical Group. Competitive salary and incentive recognition bonuses. Signing bonus. Loan repayment money available. Full Intermountain benefits to include defined pension, 401k match & CME. Relocation provided up to 15k.

Intermountain Healthcare is frequently referenced nationally as one of the leaders in delivering high quality/low cost health care.

Contact Intermountain Healthcare
Physician Recruiting.

800-888-3134 Fax: 801-442-3388

PhysicianRecruit@imail.org

<http://physicianjobsintermountain.org>

Ring in the New Year with the Career You Always Dreamed of...



ALABAMA
Montgomery

GEORGIA
Jackson & Valdosta

MARYLAND
Baltimore

MASSACHUSETTS
Bridgewater & Shirley

MICHIGAN
Lansing, Grand Rapids & Telepsych

MINNESOTA
St. Cloud, Stillwater, Minneapolis/St. Paul, Ruch City & Moose Lake

VERMONT
Statewide

Enjoy a fascinating new career in the unique field of Correctional Psychiatry. Our brand of mental healthcare offers guaranteed salaries, diverse caseloads and an innovative team-oriented work environment free of administrative hassles found in other mental health settings. Join our team of professionals and experience:

- No reimbursement hassles
- Work schedule conducive to better work/life balance
- Paid days off plus company-paid holidays
- CEU reimbursement with additional paid days off
- 401(k) plan with employer match
- Company-paid malpractice insurance and much more...

PENNSYLVANIA DEPARTMENT OF CORRECTIONS:
Full-Time & Part-Time Employed Opportunities
Clarion, Erie, Harrisburg, Pittsburgh, Scranton & State College

PHILADELPHIA PRISON SYSTEM
Full-Time & Part-Time Employed Opportunities
Philadelphia

For more information, please contact:

Vikkie Schill
877-282-5811
Vikkie@mhmcareers.com



MHM Services, Inc.

www.mhm-services.com

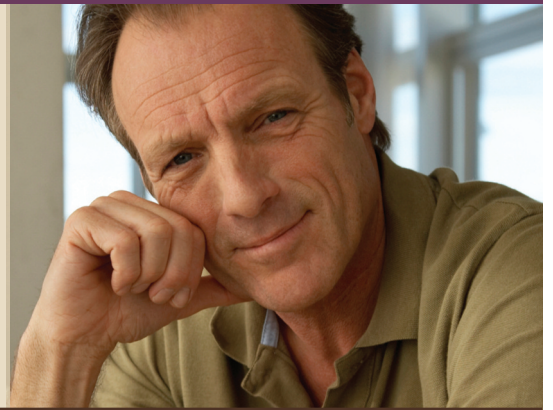
Equal Opportunity Employer

Sometimes your patients need more than **5-7 days**

When acute care isn't enough, we can help.

For nearly 90 years, The Menninger Clinic has been a leader in inpatient treatment of co-existing mood, personality, anxiety and addictive disorders.

Now we're integrating genetic profiles into assessments when indicated along with treatment outcome data that will aid all patients' engagement in their care. You can count on our personalized treatments and staying informed about your patients while they are here with us.



Advancing treatment. *Transforming lives.*

For patient referrals, call 800-351-9058.

Learn more at MenningerClinic.com

Houston, Texas



Affiliated with Baylor College of Medicine in the Texas Medical Center

2016 Isaac Ray Award

The American Psychiatric Association and the American Academy of Psychiatry and the Law invite nominations for the Isaac Ray Award for 2016. This award honors Dr. Isaac Ray, one of the original founders and the fourth President of the American Psychiatric Association, and is presented to a person who has made outstanding contributions to forensic psychiatry or to the psychiatric aspects of jurisprudence. The award, which will be presented at the Convocation of Fellows at the Annual Meeting of the American Psychiatric Association in Atlanta, Georgia, in May 2016, includes an honorarium of \$1,500.

Nominations are requested as follows: (1) a primary nominating letter (sent with the consent of the candidate), which includes a curriculum vitae and specific details regarding the candidate's qualifications for the award, and (2) a supplemental letter from a second nominator in support of the candidate. Additional letters related to any particular candidate will not be accepted or reviewed by the Award Committee. Nominators should not submit letters on behalf of more than one candidate.

The deadline for receipt of nominations is **May 1, 2016**. Nominations will be kept in the pool of applicants for two years.

Nominations, as outlined above, should be submitted to:
Isaac Ray Award Committee
c/o Lori Klinedinst, Staff Liaison
American Psychiatric Association
1000 Wilson Boulevard, Suite 1825
Arlington, VA 22209
E-mail: advocacy@psych.org



Serve Veterans & their Families

Chicago, IL

Road Home Program: Center for Veterans & their Families, an innovative program of Rush University Medical Center, in downtown Chicago is recruiting Psychiatry and Psychology faculty to support its growing clinical operations. Road Home Program's mission is to compassionately serve veterans and their families, providing individualized care and navigation of services to help heal the invisible wounds of war. These faculty positions are integral parts of the Department of Psychiatry's growing clinical and research programs and will provide opportunities to treat trauma-related psychopathology, substance use disorders, military sexual trauma, and traumatic brain injury. Individuals with interests in any of these areas of clinical practice and/or research and clinicians who are veterans or who have prior experience with veterans are all strongly encouraged to apply. The department has been successful in helping junior faculty obtain NIH career development awards, has been the recipient of NIH and SAMHSA funding, and also has substantial private foundation and philanthropic support. Faculty positions are open in rank depending on the individual applicant's qualifications. Support is available to initiate research programs that align with departmental initiatives. For more information see roadhomeprogram.org

HOSPITAL ENVIRONMENT

Rush University Medical Center, located in downtown Chicago, is a national leader in academic medicine. Under the leadership of Mark Pollack, MD, The Grainger Professor and Chairman, the Department has been expanding its vibrant research, clinical and educational programs. Our premiere academic medical center encompasses a 664-bed hospital serving adults and children. In January 2012, Rush opened a new 376-bed hospital building, known as the Tower, which is part of the Medical Center's major renovation of its campus. In March 2014, Rush opened the Road Home Program: Center for Veterans & their Families. Rush University is home to one of the first medical colleges in the Midwest and one of the nation's top-ranked nursing colleges, as well as graduate programs in allied health, health systems management and biomedical research.

The Medical Center also offers more than 70 highly selective residency and fellowship programs in medical and surgical specialties and subspecialties. Rush is consistently ranked as one of the nation's top hospitals by U.S. News & World Report. Rush is ranked in 7 of 16 categories in U.S. News & World Report's 2014-2015 "America's Best Hospital's" issue, and is one of the two top-ranked hospitals in Illinois overall. Rush was the first hospital in Illinois serving adults and children to receive Magnet status – the highest honor in nursing – and the first in Illinois to earn a third four-year designation. **Rush is an Equal Opportunity Employer**

For more information, please contact:

William Krech
Faculty Recruiter
William_Krech@rush.edu
312-942-1835

Niranjan Karnik, MD, PhD
Medical Director, Road Home Program
Niranjan_Karnik@rush.edu
312-942-8387



Binge eating disorder is a cycle of...

Binge. Distress. Repeat.¹

The most common eating disorder in US adults isn't just about eating^{*1,2}

The exact cause of binge eating disorder (BED) is unknown. Research suggests that, among the potential causes, BED may have a neurobiological basis.³⁻⁶

BED, now a distinct disorder in *DSM-5*[®], is defined as recurring episodes (\geq once weekly, for at least 3 months) of consuming a large amount of food in a short time, compared with others. Patients feel a lack of control during a binge and marked distress over their eating. They typically experience shame and guilt, among other symptoms, about their bingeing, and may conceal these symptoms, even from you.¹

Visit BingeEatingDisorder.com/hcp to review the **full *DSM-5*[®] diagnostic criteria** and find information to help you identify and accurately diagnose adults with BED in your practice.

^{*}Based on a national survey of US adults aged 18 and older.²

References: 1. American Psychiatric Association. *Diagnostic and Statistical Manual of Mental Disorders*. 5th ed. Arlington, VA: American Psychiatric Association; 2013. 2. Hudson JL, Hiripi E, Pope HG Jr, Kessler RC. *Biol Psychiatry*. 2007;61(3):348-358. [Erratum in *Biol Psychiatry*. 2012;72(2):164.] 3. Manwaring JL, Green L, Myerson J, Strube MJ, Wilfley DE. *Psychol Rec*. 2011;61(4):561-582. 4. Balodis IM, Molina ND, Kober H, et al. *Obesity (Silver Spring)*. 2013;21(2):367-377. 5. Davis CA, Levitan RD, Reid C, et al. *Obesity (Silver Spring)*. 2009;17(6):1220-1225. 6. Wang G-J, Geliebter A, Volkow ND, et al. *Obesity (Silver Spring)*. 2011;19(8):1601-1608.

DSM-5[®] is a registered trademark of the American Psychiatric Association.

Shire US Inc. 1-800-828-2088

©2014 Shire US Inc., Wayne, PA 19087 S04567 12/14

Shire