

THE AMERICAN PSYCHIATRIC ASSOCIATION

1000 Wilson Blvd., Suite 1825, Arlington, VA 22209-3901
(888) 357-7924 (toll-free inside the U.S. and Canada) / (703) 907-7300
web site: www.psych.org/ e-mail: apa@psych.org



OFFICERS 2012–2013

President	Dilip V. Jeste, M.D.
President-Elect	Jeffrey A. Lieberman, M.D.
Treasurer	David Fassler, M.D.
Secretary	Roger Peele, M.D.

ASSEMBLY

Speaker	R. Scott Benson, M.D.
Speaker-Elect	Melinda L. Young, M.D.
Recorder	Jenny L. Boyer, M.D.

MEDICAL DIRECTOR'S OFFICE

Medical Director and CEO	James H. Scully, Jr., M.D.
--------------------------	----------------------------

BOARD OF TRUSTEES

Jeffrey Akaka, M.D.	Judith F. Kashtan, M.D.
Carol A. Bernstein, M.D.	Molly K. McVoy, M.D.
Brian Crowley, M.D.	James E. Ninninger, M.D.
Jeffrey Geller, M.D.	John M. Oldham, M.D.
Marc David Graff, M.D.	Alan F. Schatzberg, M.D.
James A. Greene, M.D.	Alik S. Widge, M.D., Ph.D.

PUBLISHER

Rebecca D. Rinehart



The American Journal of Psychiatry is online at ajp.psychiatryonline.org

THE AMERICAN PSYCHIATRIC ASSOCIATION
Chairpersons of Councils, Commissions, Committees, and Task Forces

Standing Committees

Bylaws

Eric M. Plakun, M.D.

Elections

Robert E. Kelly, Jr., M.D.

Ethics

Richard D. Milone, M.D.

Finance and Budget

Frank W. Brown, M.D.

Audit

David Fassler, M.D.

Investment Oversight

Larry R. Faulkner, M.D.

Joint Reference

Jeffrey A. Lieberman, M.D.

Membership

Joseph Ezra V. Rubin, M.D.

Nominating

John M. Oldham, M.D.

Tellers

Tanya Nayyirah Alim, M.D.

Council on Addiction Psychiatry

John A. Renner, M.D.

Council on Advocacy and Government Relations

Robert Paul Cabaj, M.D.

Advocacy and Litigation Funding

Renee L. Binder, M.D.

Council on Children, Adolescents, and Their Families

Louis J. Kraus, M.D.

Agnes Purcell McGavin Award

Blanche F. Ittleson Research Award

Karen Dineen Wagner, M.D.

Council on Communications

Jeffrey A. Borenstein, M.D.

Council on Geriatric Psychiatry

Brent P. Forester, M.D.

Council on Healthcare Systems and Financing

Sul Ross Olen Thorward, M.D.

Reimbursement for Psychiatric Care

Bruce J. Schwartz, M.D.

RBRVS, Codes and Reimbursement

Ronald M. Burd, M.D.

Council on Medical Education and Lifelong Learning

Sandra Sexson, M.D.

APA Public Psychiatry Fellowship Selection Committee

Stephen M. Goldfinger, M.D.

APA/SAMHSA Minority Fellowship Selection and Advisory

Toi B. Harris, M.D.

Scientific Program

Joseph A. Cheong, M.D.

Scientific Program Committee of the Institute on Psychiatric Services

David Alan Pollack, M.D.

Task Force to Update the Ethics Annotations

Laura W. Roberts, M.D.

Vestermark Award Committee

Frederick G. Guggenheim, M.D.

Council on Minority Health and Health Disparities

Sandra C. Walker, M.D.

Council on Psychiatry And Law

Patricia R. Recupero, M.D., J.D.

Isaac Ray/Human Rights Award

Steven K. Hoge, M.D.

Judicial Action

Paul S. Appelbaum, M.D.

Manfred S. Guttmacher Award

Rebecca W. Brendel, M.D., J.D.

**Council on Psychosomatic Medicine
(Consultation Liaison Psychiatry)**

Joel E. Dimsdale, M.D.

Council on Research and Quality Care

Joel Yager, M.D.

Electronic Health Records

Steven Roy Daviss, M.D.

Psychiatric Dimensions of Disasters

Robert J. Ursano, M.D.

Research Awards

Lewis L. Judd, M.D.

Steering Committee on Practice Guidelines

Joel Yager, M.D.

Task Force on DSM-V

David J. Kupfer, M.D.

Task Force to Revise the Practice of Electroconvulsive Therapy

Sarah H. Lisanby, M.D.



For free listing of your organization's official annual or regional meeting, please send us the following information: sponsor, location, inclusive dates, type and number of continuing education credits (if available), and the name, address, and telephone number of the person or group to contact for more information. In order for an event to appear in our listing, all notices and changes must be received at least 6 months in advance of the meeting and should be addressed to:

Calendar, American Journal of Psychiatry, 1000 Wilson Boulevard, Suite 1825, Arlington, VA 22209-3901, swestrade@psych.org (e-mail).

Because of space limitations, only listings of meetings of the greatest interest to Journal readers may be included.

MAY

May 18–19, Meeting of the American Association of Chairs of Departments of Psychiatry, Hilton San Francisco at Union Square, San Francisco, Calif. www.aacdp.org (web site).

May 18–22, 166th Annual Meeting, American Psychiatric Association, San Francisco, Calif. Contact: APA Annual Meetings Dept., 1000 Wilson Blvd, Suite 1825, Arlington, VA 22209; (703) 907-7815 (tel); <http://www.psych.org/learn/annual-meeting> (web site).

JUNE

June 6–9, 4th World Congress on ADHD: From Childhood to Adult Disease, Milan, Italy. Contact Congress Organizer, +49-40-670 88 20 (tel); adhd2013@cpo-hanser.de (email); www.adhd-congress.org (web site).

June 20–22, Association of Directors of Medical Student Education in Psychiatry meeting, Williamsburg Lodge, Williamsburg, Va. For registration information, go to http://www.admsep.org/upcoming_meeting.php.

JULY

July 8–13, 28th International Congress of Applied Psychology, Palais

des Congrès de Paris, France. Contact: exh@icap2014.com (email); www.icap2014.com (web site).

SEPTEMBER

September 25–27, 9th Congress of the International Neuropsychiatric Association, Chicago, Ill. www.inawebsite.org (web site).

OCTOBER

October 10–13, 65th Institute on Psychiatric Services, Philadelphia, Pa. Contact: APA Annual Meetings Dept., 1000 Wilson Blvd, Suite 1825, Arlington, VA 22209; <http://www.psychiatry.org/learn/institute-on-psychiatric-services> (web site).

October 16–19, annual meeting of the Association for Academic Psychiatry, Charleston, S.C. www.academicpsychiatry.org (web site).

October 17–21, XXI World Congress of Psychiatric Genetics, Boston, Mass. Contact congress organizer: Parthenon Management Group, 5034A Thoroughbred Lane, Brentwood, TN 37027; (615) 324-2365 (tel); info@parthenonmanagementgroup.com (email); www.wcpg2013.org (web site).

FEBRUARY 2014

February 16–20, 25th Annual Meeting of the American Neuropsychiatric Association, Seattle, Wash. www.anpaonline.org (web site).

MARCH 2014

March 12–15, 43rd Annual Meeting of the American Association of Directors of Psychiatric Residency Training, Tucson, Ariz. www.aadpr.org (web site).

MAY 2014

May 3–7, 167th Annual Meeting, American Psychiatric Association, New York, NY. Contact: APA Annual Meetings Dept., 1000 Wilson Blvd, Suite 1825, Arlington, VA 22209; (703) 907-7815 (tel); <http://www.psych.org/learn/annual-meeting> (web site).



Continuing Medical Education

Three articles in this issue form the basis of a short course with questions that can be answered for up to 1 *AMA PRA Category 1 Credit™* each by visiting <http://psychiatryonline.org/cme.aspx> and clicking on the “American Journal of Psychiatry” tab.

CME credit is issued only online, and a paid subscription to the AJP CME course program is required.

This month’s courses appear on pages 567–570.

FREE AUDIO!



Have You Heard?

You can listen to highlights of *The American Journal of Psychiatry* by downloading a monthly free .mp3 audio file from our web site (<http://ajp.psychiatryonline.org/audio.aspx#>) or by subscribing to the AJP Audio podcast at iTunes or other feed reader. Presented by Deputy Editor Dr. Susan Schultz or by Executive Editor Michael Roy, each month’s audio lasts approximately 30 minutes and covers several research articles, the Treatment in Psychiatry feature, and one or two editorials.



Coming in the June 2013 issue*

THE AMERICAN JOURNAL OF PSYCHIATRY

Relapse Duration, Treatment Intensity, and Brain Tissue Loss in Schizophrenia: A Prospective Longitudinal MRI Study

N.C. Andreasen, D. Liu, S. Ziebell, A. Vora, and B.-C. Ho

Increase in Work Productivity of Depressed Individuals With Improvement in Depressive Symptom Severity

M.H. Trivedi, D.W. Morris, S.R. Wisniewski, I. Lesser, A.A. Nierenberg, E. Daly, B.T. Kurian,
B.N. Gaynes, G.K. Balasubramani, and A.J. Rush

Transitions in Illicit Drug Use Status Over 3 Years: A Prospective Analysis of a General Population Sample

W.M. Compton, D.A. Dawson, K.P. Conway, M. Brodsky, and B.F. Grant

Cognitive Experiences Reported by Patients With Borderline Personality Disorder and Axis II Comparison Subjects: A 16-Year Prospective Follow-Up Study

M.C. Zanarini, F.R. Frankenburg, M.M. Wedig, and G.M. Fitzmaurice

*Can't wait? Visit ajp.psychiatryonline.org/AJPIAdvance.aspx to see all articles uploaded in advance of print!

The Residents' JOURNAL

The Residents' JOURNAL

a publication of
The American Journal of Psychiatry

March 2013

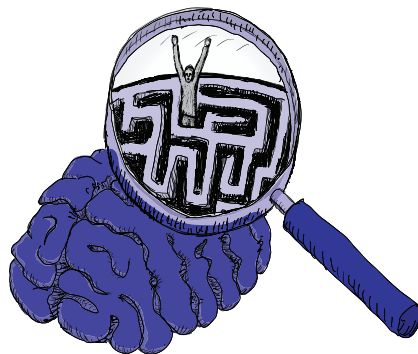
Volume 8

Issue 3

Inside

- 2 Metformin Adjuvant Therapy to Counteract Metabolic Side Effects of Atypical Antipsychotics
David Ryan Goldsmith, M.D.
- 5 Psychiatric Biomarkers: A Review of Recent Advances
Vivek Jayadeva, B.S.
- 7 Gender Dysphoria in a 4-Year-Old Boy
Megan Mroczkowski, M.D.
- 9 Transcending the Glass Ceiling: Advancement of Women in Academic Psychiatry
Misty C. Richards, M.D., M.S.
- 10 In the Eye of the Storm: A Resident's Perspective on Hurricane Sandy
Carmen Casasnovas, M.D.
- 11 How Doctors Think
Reviewed by David Hsu, M.D.
- 12 Test Your Knowledge
- 13 Author Information for The Residents' Journal Submissions
- 13 Upcoming Issue Themes

In This Issue



This issue of the *Residents' Journal* begins with an informative article by David Ryan Goldsmith, M.D., on the use of metformin adjuvant therapy to treat the metabolic side effects, including weight gain, of atypical antipsychotics. Next, Vivek Jayadeva, B.S., provides an overview of recent advances in psychiatric biomarkers for mood disorders, autism spectrum disorders, and schizophrenia. Megan Mroczkowski, M.D., presents a case report of a 4-year-old boy with gender dysphoria. Misty C. Richards, M.D., M.S., discusses the advancement of women in academic psychiatry. In a perspective, Carmen Casasnovas, M.D., shares her experience providing care during Hurricane Sandy. Last, David Hsu, M.D., reviews the book *How Doctors Think*.

Editor-in-Chief
Monifa Seawell, M.D.
Senior Editor
Sarah M. Fayad, M.D.
Associate Editor
Arshya Vahabzadeh, M.D.

Editors Emeriti
Sarah B. Johnson, M.D.
Molly McVay, M.D.
Joseph M. Cerimele, M.D.
Staff Editor
Angela Moore

The Residents' Journal accepts manuscripts authored by medical students, resident physicians, and fellows. To submit your paper, please visit the manuscript submission site at mc.manuscriptcentral.com/appi-ajp and either create an account or use your existing account. For manuscript type, select "Residents." Then follow the instructions to upload your manuscript. Residents who are interested in participating as Guest Section Editors should e-mail *The Residents' Journal* Editor-in-Chief Monifa Seawell at mseawell@med.wayne.edu.

The Residents' Journal is sent free-of-charge to all psychiatry residents. Anyone interested in being included on the distribution list should contact Angela Moore, *The Residents' Journal* staff editor at ajp@psych.org with "Subscribe to Residents' Journal" in the subject line.

To access the complete Residents' Journal archives, visit ajp.psychiatryonline.org/residents_journal.aspx

The American Journal of PSYCHIATRY

4 of Journal Watch
Psychiatry's
10 "Top Stories of 2012"
appeared in AJP!
No other journal had
multiple appearances!



Official Journal of the
American Psychiatric Association

Edited by Robert Freedman, M.D.

- *The American Journal of Psychiatry* (AJP) has an Impact Factor of 12.539 according to the 2011 Journal Citation Reports® (Thomson Reuters, 2012), placing it 2nd among the 129 journals in psychiatry while still remaining the far-and-away leader in total citations.
- *The American Journal of Psychiatry* is also the #2 journal in psychiatry in terms of immediacy according to Thomson Scientific's Immediacy Index. This important performance metric is calculated by dividing the number of citations to articles published in a given year by the number of articles published in that year.
- A poll conducted by the BioMedical & Life Sciences Division of The Special Libraries Association identified the 100 most influential journals in all of Biology & Medicine over the last 100 years. *The American Journal of Psychiatry* was among those honored, the only psychiatry/psychology journal represented.

**Latest
IMPACT FACTOR 12.539!**

No other psychiatric journal reaches more psychiatrists with greater impact or immediacy than the one the overwhelming majority of psychiatrists considers essential: AJP.

ISSN 0002-953X • ajp.psychiatryonline.org
To order a subscription, visit www.appi.org.



The *First* and *Last* Word in Psychiatry
www.appi.org • 1-800-368-5777 • 703-907-7322

Priority Code AH1303



Contents

A13 Editorial Board

A15 Highlights of this issue

Editorials

243 **Clinical staging in psychiatry: a cross-cutting model of diagnosis with heuristic and practical value**

J. Scott, M. Leboyer, I. Hickie, M. Berk, F. Kapczynski, E. Frank, D. Kupfer and P. McGorry

246 **The balanced care model: the case for both hospital- and community-based mental healthcare**

G. Thornicroft and M. Tansella

249 **Can early intervention services modify pathways into care?**

P. Fearon

251 **Antidepressants and rapid-cycling bipolar II disorder: dogma, definitions and deconstructing discrepant data**

M. E. Thase

Review article

253 **Effect of psychosocial interventions on social functioning in depression and schizophrenia: meta-analysis**

M. J. De Silva, S. Cooper, H. Lishi Li, C. Lund and V. Patel

Papers

261 **FKBP5 as a possible moderator of the psychosis-inducing effects of childhood trauma**

D. Collip, I. Myin-Germeys, M. Wichers, N. Jacobs, C. Derom, E. Thiery, T. Lataster, C. Simons, P. Delespaul, M. Marcelis, J. van Os and R. van Winkel

268 **Art Brut – in 100 words**

Rachael Hall

269 **Amygdala activation in maltreated children during pre-attentive emotional processing**

E. J. McCrory, S. A. De Brito, P. A. Kelly, G. Bird, C. L. Sebastian, A. Mechelli, S. Samuel and E. Viding

277 **Ethnic variations in pathways into early intervention services for psychosis**

S. Ghali, H. L. Fisher, J. Joyce, B. Major, L. Hobbs, S. Soni, B. Chisholm, N. Rahaman, P. Papada, J. Lawrence, S. Bloy, K. Marlowe, K. J. Aitchison, P. Power and S. Johnson

284 **Invited commentary on . . . Ethnic variations in pathways into early intervention services for psychosis**

R. Warner

285 **Speed limit! – extra**

Shabbir Amanullah

286 **Common mental disorders, neighbourhood income inequality and income deprivation: small-area multilevel analysis**

D. Fone, G. Greene, D. Farewell, J. White, M. Kelly and F. Dunstan

294 **Gender differences in mental health expectancies in early- and midlife in six European countries**

T. S. Brugha, R. Matthews, J. Alonso, G. Vilagut, T. Fouweather, R. Bruffaerts, G. de Girolamo, R. de Graaf, J. M. Haro, V. Kovess and C. Jagger

300 **Peripheral Neuropathy – poem**

Johanna Emenev

301 **Efficacy and mood conversion rate during long-term fluoxetine v. lithium monotherapy in rapid- and non-rapid-cycling bipolar II disorder**

J. D. Amsterdam, L. Luo and J. Shults

306 **Karl Jaspers and human-based psychiatry – reflection**

Michael Musalek

Short report

307 **Acceptability and necessity of HIV and other blood-borne virus testing in a psychiatric setting**

C. Sanger, J. Hayward, G. Patel, K. Phekoo, A. J. Poots, C. Howe, O. Bowden-Jones and J. Green

Columns

309 **Correspondence**313 **Correction**314 **Book reviews**316 **Contents of *Advances in Psychiatric Treatment***317 **Contents of the *American Journal of Psychiatry***318 **From the Editor's desk**

Cover picture

Self-Portrait, no. 1 (2011), by Clara Lieu (b. 1976)

This project is a visualisation of personal experience with depression and anxiety. The condition brought on frequent episodes where I felt emotionally and physically out of control. Unable to 'release' myself from these episodes, I waited for the physical limitations of my body to end them. Recounting the affected years, I realise how accustomed I became to depression's influence; many emotions and feelings belonged to it, and not my own personality. After an extended, untreated struggle, a diagnosis brought relief, and the process of unearthing myself from the disease began.

These drawings are worked on sheets of sanded Dura-Lar, a thick sheet of plastic. Etching ink is rubbed into the plastic directly with my hands. Once the etching ink has fully dried, marks with lithographic crayon are added and lines are etched into the drawing using a craft knife.

Clara Lieu is a visual artist and a professor at the Rhode Island School of Design: www.claralieu.com.

We are always looking for interesting and visually appealing images for the cover of the *Journal* and would welcome suggestions or pictures, which should be sent to Dr Allan Beveridge, British Journal of Psychiatry, 17 Belgrave Square, London SW1X 8PG, UK or bjp@rcpsych.ac.uk.

