

# THE AMERICAN PSYCHIATRIC ASSOCIATION

1000 Wilson Blvd., Suite 1825, Arlington, VA 22209-3901  
(888) 357-7924 (toll-free inside the U.S. and Canada) / (703) 907-7300  
web site: [www.psychiatry.org](http://www.psychiatry.org) • e-mail: [apa@psych.org](mailto:apa@psych.org)



## OFFICERS 2013–2014

President	Jeffrey A. Lieberman, M.D.
President-Elect	Paul Summergrad, M.D.
Treasurer	David Fassler, M.D.
Secretary	Maria A. Oquendo, M.D.

## ASSEMBLY

Speaker	Melinda L. Young, M.D.
Speaker-Elect	Jenny L. Boyer, M.D.
Recorder	Glenn A. Martin, M.D.

## MEDICAL DIRECTOR'S OFFICE

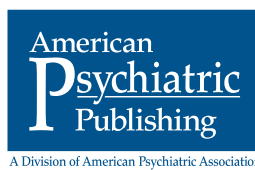
Medical Director and CEO James H. Scully, Jr., M.D.

## BOARD OF TRUSTEES

Jeffrey Akaka, M.D.	Jeffrey Geller, M.D.	Phillip M. Murray, M.D.
Christina J. Arredondo, M.D.	Marc David Graff, M.D.	James E. Niningger, M.D.
Carol A. Bernstein, M.D.	James A. Greene, M.D.	John M. Oldham, M.D.
Lara J. Cox, M.D., M.S.	Dilip V. Jeste, M.D.	Uyen-Khanh Quang-Dang, M.D.
Brian Crowley, M.D.	Judith F. Kashtan, M.D.	Gail E. Robinson, M.D.
Anita S. Everett, M.D.	Molly K. McVoy, M.D.	Erik R. Vanderlip, M.D.

## PUBLISHER

Rebecca D. Rinehart



The American Journal of Psychiatry is online at [ajp.psychiatryonline.org](http://ajp.psychiatryonline.org)

THE AMERICAN PSYCHIATRIC ASSOCIATION  
Chairpersons of Councils, Commissions, Committees, and Task Forces

Standing Committees

**Bylaws**

Rebecca W. Brendel, M.D., J.D.

**Elections**

Barry K. Herman, M.D.

**Ethics**

Richard D. Milone, M.D.

**Finance and Budget**

Alan F. Schatzberg, M.D.

*Audit*

David Fassler, M.D.

*Investment Oversight*

Larry R. Faulkner, M.D.

**Joint Reference**

Paul Summergrad, M.D.

**Membership**

Jonathan M. Amiel, M.D.

**Nominating**

Dilip V. Jeste, M.D.

**Tellers**

Hind Benjelloun, M.D.

**Council on Addiction Psychiatry**

Frances R. Levin, M.D.

**Council on Advocacy and Government Relations**

Robert Paul Cabaj, M.D.

*Advocacy and Litigation Funding*

Renee L. Binder, M.D.

**Council on Children, Adolescents, and Their Families**

Louis J. Kraus, M.D.

*Agnes Purcell McGavin Award*

Christopher J. McDougle, M.D.

*Blanche F. Ittleson Research Award*

Matthew W. State, M.D.

**Council on Communications**

Jeffrey A. Borenstein, M.D.

**Council on Geriatric Psychiatry**

Robert P. Roca, M.D.

**Council on Healthcare Systems and Financing**

Harsh K. Trivedi, M.D.

*Reimbursement for Psychiatric Care*

Bruce J. Schwartz, M.D.

*RBRVS, Codes and Reimbursement*

Ronald M. Burd, M.D.

**Council on Medical Education and Lifelong Learning**

Richard F. Summers, M.D.

*APA Public Psychiatry Fellowship Selection Committee*

Christina V. Mangurian, M.D.

*APA/SAMHSA Minority Fellowship Selection and Advisory*

Altha J. Stewart, M.D.

*Scientific Program*

Philip R. Muskin, M.D.

*Scientific Program Committee of the Institute on Psychiatric Services*

Altha J. Stewart, M.D.

*Task Force to Update the Ethics Annotations*

Laura W. Roberts, M.D.

*Vestermark Award Committee*

Joel Yager, M.D.

**Council on Minority Health and Health Disparities**

Sandra C. Walker, M.D.

**Council on Psychiatry And Law**

Steven K. Hoge, M.D.

*Isaac Ray/Human Rights Award*

Steven K. Hoge, M.D.

*Judicial Action*

Paul S. Appelbaum, M.D.

*Manfred S. Guttmacher Award*

David A. Lowenthal, M.D.

**Council on Psychosomatic Medicine  
(Consultation Liaison Psychiatry)**

Joel E. Dimsdale, M.D.

**Council on Quality Care**

Joel Yager, M.D.

*Electronic Health Records*

Steven Roy Daviss, M.D.

*Steering Committee on Practice Guidelines*

Michael J. Vergare, M.D.

**Council on Research**

Dwight L. Evans, M.D.

*Psychiatric Dimensions of Disasters*

Charles R. Marmar, M.D.

*Research Awards*

Timothy B. Walsh, M.D.

*Task Force to Revise the Practice of Electroconvulsive Therapy*

Sarah H. Lisanby, M.D.



*For free listing of your organization's official annual or regional meeting, please send us the following information: sponsor, location, inclusive dates, type and number of continuing education credits (if available), and the name, address, and telephone number of the person or group to contact for more information. In order for an event to appear in our listing, all notices and changes must be received at least 6 months in advance of the meeting and should be addressed to:*

**Calendar, American Journal of Psychiatry, 1000 Wilson Boulevard, Suite 1825, Arlington, VA 22209-3901, [swestrade@psych.org](mailto:swestrade@psych.org) (e-mail).**

*Because of space limitations, only listings of meetings of the greatest interest to Journal readers may be included.*

---

## OCTOBER

**October 10–13**, 65th Institute on Psychiatric Services, Philadelphia, Pa. Contact: APA Annual Meetings Dept., 1000 Wilson Blvd, Suite 1825, Arlington, VA 22209; <http://www.psychiatry.org/learn/institute-on-psychiatric-services> (web site).

**October 16–19**, annual meeting of the Association for Academic Psychiatry, Charleston, S.C. [www.academicpsychiatry.org](http://www.academicpsychiatry.org) (web site).

**October 17–21**, XXI World Congress of Psychiatric Genetics, Boston, Mass. Contact congress organizer: Parthenon Management Group, 5034A Thoroughbred Lane, Brentwood, TN 37027; (615) 324-2365 (tel); [info@parthenonmanagementgroup.com](mailto:info@parthenonmanagementgroup.com) (email); [www.wcpg2013.org](http://www.wcpg2013.org) (web site).

**October 24–27**, 44th Annual Meeting, American Academy of Psychia-

try and the Law, Hotel del Coronado, San Diego, Calif. [www.aapl.org/meetings.htm](http://www.aapl.org/meetings.htm) (web site).

---

## DECEMBER

**December 5–8**, 24th Annual Meeting and Symposium, American Academy of Addiction Psychiatry, Scottsdale Resort and Conference Center, Scottsdale, Ariz. [www.aaap.org/meetings-and-events/2013-annual-meeting](http://www.aaap.org/meetings-and-events/2013-annual-meeting) (web site).

---

## FEBRUARY 2014

**February 16–20**, 25th Annual Meeting of the American Neuropsychiatric Association, Seattle, Wash. [www.anpaonline.org](http://www.anpaonline.org) (web site).

---

## MARCH 2014

**March 12–15**, 43rd Annual Meeting of the American Association of

Directors of Psychiatric Residency Training, Tucson, Ariz. [www.aadprt.org](http://www.aadprt.org) (web site).

---

## MAY 2014

**May 3–7**, 167th Annual Meeting, American Psychiatric Association, New York, NY. Contact: APA Annual Meetings Dept., 1000 Wilson Blvd, Suite 1825, Arlington, VA 22209; (703) 907-7815 (tel); <http://www.psych.org/learn/annual-meeting> (web site).

---

## JULY 2014

**July 8–13**, 28th International Congress of Applied Psychology, Palais de Congrès de Paris, France. Contact [exh@icap2014.com](mailto:exh@icap2014.com) (e-mail), [www.icap2014.com](http://www.icap2014.com) (web site).



## Continuing Medical Education

Three articles in this issue form the basis of a short course with questions that can be answered for up to 1 *AMA PRA Category 1 Credit*<sup>™</sup> each by visiting <http://psychiatryonline.org/cme.aspx> and clicking on the “American Journal of Psychiatry” tab.

CME credit is issued only online, and a paid subscription to the AJP CME course program is required.

This month’s courses appear on pages 1219–1222.

FREE AUDIO!



### Have You Heard?

You can listen to highlights of *The American Journal of Psychiatry* by downloading a monthly free .mp3 audio file from our web site (<http://ajp.psychiatryonline.org/audio.aspx#>) or by subscribing to the AJP Audio podcast at iTunes or other feed reader. Presented by Deputy Editor Dr. Susan Schultz or by Executive Editor Michael Roy, each month’s audio lasts approximately 30 minutes and covers several research articles, the Treatment in Psychiatry feature, and one or two editorials.



Coming in the November 2013 issue\*

## THE AMERICAN JOURNAL OF PSYCHIATRY

The International Society for Bipolar Disorders (ISBD) Task Force Report  
on Antidepressant Use in Bipolar Disorders

I. Pacchiarotti, et al.

Clinical Phenotypes of Psychosis in the Bipolar and Schizophrenia Network on  
Intermediate Phenotypes (B-SNIP)

C.A. Tamminga, E.I. Ivleva, M.S. Keshavan, G.D. Pearlson, B.A. Clementz, B. Witte,  
D.W. Morris, J. Bishop, G.K. Thaker, and J.A. Sweeney

Methamphetamine-Induced Disruption of Frontostriatal Reward Learning Signals:  
Relation to Psychotic Symptoms

J. Bernacer, P.R. Corlett, P. Ramachandra, B. McFarlane, D.C. Turner, L. Clark, T.W. Robbins,  
P.C. Fletcher, and G.K. Murray

Meta-Regression Analysis of Placebo Response in Antipsychotic Trials, 1970–2010

O. Agid, C.O. Siu, S.G. Potkin, S. Kapur, E. Watsky, D. Vanderburg, R.B. Zipursky, and G. Remington

\*Can’t wait? Visit [ajp.psychiatryonline.org/AJPinAdvance.aspx](http://ajp.psychiatryonline.org/AJPinAdvance.aspx) to see all articles uploaded in advance of print!

# The Residents' JOURNAL

## The Residents' JOURNAL

a publication of  
The American Journal of Psychiatry

August 2013

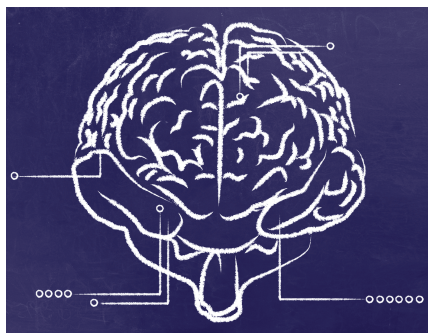
Volume 8

Issue 8

### Inside

- 2 **Shoulder to Shoulder**  
Arshya Vahabzadeh, M.D.  
Editor-in-Chief
- 3 **Psychoeducation in Bipolar Disorder: How Much Do Our Patients Know?**  
Mario A. Crisnacho, M.D.  
Josh Natbony, B.A.
- 6 **Dementia Masquerading as Bipolar Disorder**  
Nikhath Irfana, M.D.  
Suraj Singh, M.D.
- 8 **Manganese Toxicity: A Potential Contributor to Mood Disorder and Psychosis**  
Chris A. Karampahtsis, M.D., M.P.H.
- 10 **Reflections From a Psychiatric Resident as Teacher**  
Mark A. Oldham, M.D.
- 13 **Moving Beyond the Silos: How a Child Psychiatrist Can Work With a School**  
Priya Sehgal, M.D., M.A.
- 15 **Test Your Knowledge**
- 16 **Author Information for Submissions and Upcoming Themes**

### In This Issue



This month's issue of the *Residents' Journal* features articles on a variety of topics. The issue begins with a study by Mario A. Crisnacho, M.D., and Josh Natbony, B.A., on psychoeducation in bipolar disorder, focusing on patients' knowledge of their illness. Next, Nikhath Irfana, M.D., and Suraj Singh, M.D., present a case report of an elderly man with dementia who was initially diagnosed with bipolar disorder. Chris A. Karampahtsis, M.D., M.P.H., discusses a case in which manganese toxicity may have contributed to symptoms in a suicidal patient. Mark A. Oldham, M.D., provides detailed information regarding the benefits and importance of residents teaching medical students. Lastly, Priya Sehgal, M.D., M.A., highlights elements of psychiatric school consultation, emphasizing roles for consulting child psychiatrists.

Editor-in-Chief  
Arshya Vahabzadeh, M.D.  
Deputy Editor  
Misty Richards, M.D., M.S.  
Associate Editor  
David Hsu, M.D.  
Staff Editor  
Angela Moore

Editors Emeriti  
Sarah B. Johnson, M.D.  
Melly McVoy, M.D.  
Joseph M. Cerimele, M.D.  
Sarah M. Fayod, M.D.  
Manifa Seawell, M.D.

*The Residents' Journal* accepts manuscripts authored by medical students, resident physicians, and fellows. To submit your paper, please visit the manuscript submission site at [mc.manuscriptcentral.com/appi-ajp](http://mc.manuscriptcentral.com/appi-ajp) and either create an account or use your existing account. For manuscript type, select "Residents." Then follow the instructions to upload your manuscript. Residents who are interested in participating as Guest Section Editors should e-mail *The Residents' Journal* Editor-in-Chief Arshya Vahabzadeh at [vahab1789@gmail.com](mailto:vahab1789@gmail.com).

*The Residents' Journal* is sent free-of-charge to all psychiatry residents. Anyone interested in being included on the distribution list should contact Angela Moore, *The Residents' Journal* staff editor at [ajp@psych.org](mailto:ajp@psych.org) with "Subscribe to Residents' Journal" in the subject line.

To access the complete Residents' Journal archives, visit [ajp.psychiatryonline.org/residents\\_journal.aspx](http://ajp.psychiatryonline.org/residents_journal.aspx)

## Contents

- A9 Editorial Board  
A11 Highlights of this issue

## Editorials

- 161 **Cognitive function in schizophrenia: insights from intelligence research**  
E. M. Joyce
- 163 **Assessing the severity of borderline personality disorder**  
P. Moran and M. J. Crawford
- 165 **Social ecology interventions for post-traumatic stress disorder: what can we learn from child soldiers?**  
B. Kohrt

- 167 **Maria I of Portugal: another royal psychiatric patient of Francis Willis**  
Timothy Peters and Clive Willis

- 168 **Differing perspectives on what is important in media reporting of suicide**  
J. Pirkis and A. Machlin

## Reappraisal

- 170 **What's the point of neuropsychanalysis?**  
F. Ramus

## Review articles

- 172 **Adjunctive pharmacotherapy for cognitive deficits in schizophrenia: meta-analytical investigation of efficacy**  
K.-H. Choi, T. Wykes and M. M. Kurtz
- 179 **Agomelatine efficacy and acceptability revisited: systematic review and meta-analysis of published and unpublished randomised trials**  
M. Koesters, G. Guaiana, A. Cipriani, T. Becker and C. Barbui

- 187 **Frantz Fanon's *Black Skin, White Masks* – reflection**  
Roland Littlewood

## Papers

- 188 **Impact of a 2-year multimodal intervention for disruptive 6-year-olds on substance use in adolescence: randomised controlled trial**  
N. Castellanos-Ryan, J. R. Séguin, F. Vitaro, S. Parent and R. E. Tremblay

- 195 **Wilfred Owen: hospital poet – in 100 words**  
Alistair Stewart

- 196 **Post-traumatic stress symptoms among former child soldiers in Sierra Leone: follow-up study**  
T. A. Betancourt, E. A. Newnham, R. McBain and R. T. Brennan

- 202 **Conscious – poem**  
Wilfred Owen

- 203 **Determinants for undetected dementia and late-life depression**  
R. Chen, Z. Hu, R.-L. Chen, Y. Ma, D. Zhang and K. Wilson

- 209 **Subcortical connectivity in dementia with Lewy bodies and Alzheimer's disease**  
E. R. Kenny, J. T. O'Brien, M. J. Firbank and A. M. Blamire

- 215 **Effect of prior treatment with antipsychotic long-acting injection on randomised clinical trial treatment outcomes**  
T. R. E. Barnes, R. J. Drake, G. Dunn, K. P. Hayhurst, P. B. Jones and S. W. Lewis

- 221 **Impact of clinical severity on outcomes of mentalisation-based treatment for borderline personality disorder**  
A. Bateman and P. Fonagy

- 228 **How people bereaved by suicide perceive newspaper reporting: qualitative study**  
A. Chapple, S. Ziebland, S. Simkin and K. Hawton

## Columns

- 233 Correspondence  
236 Book review  
236 Contents of *Advances in Psychiatric Treatment*  
237 Contents of the *American Journal of Psychiatry*  
238 From the Editor's desk

## Cover picture

*From Today I Haven't a Friend in the World* (2009). Marie Suzuki (b. 1979)

Marie Suzuki's technically accomplished drawings express phobic portrayals of sex, procreation and gender. Disgust and fascination combine in these powerful works that Marie has been making since 2007.

Collection of the artist. Photograph © Nobuo Onishi. This work was among those recently displayed at Souzou: Outsider Art from Japan, at the Wellcome Collection ([www.wellcomecollection.org/souzou](http://www.wellcomecollection.org/souzou)).



We are always looking for interesting and visually appealing images for the cover of the *Journal* and would welcome suggestions or pictures, which should be sent to Dr Allan Beveridge, British Journal of Psychiatry, 17 Belgrave Square, London SW1X 8PG, UK or [bjp@rcpsych.ac.uk](mailto:bjp@rcpsych.ac.uk).