

# Association Between ADHD and Obesity: A Systematic Review and Meta-Analysis

Samuele Cortese, M.D., Ph.D., Carlos Renato Moreira-Maia, M.D., Ph.D., Diane St. Fleur, M.D., Carmen Morcillo-Peñalver, M.D., Luis Augusto Rohde, M.D., Ph.D., Stephen V. Faraone, Ph.D.

**Objective:** Impulsivity and inattention related to attention deficit hyperactivity disorder (ADHD) may increase food intake and, consequently, weight gain. However, findings on the association between obesity/overweight and ADHD are mixed. The authors conducted a meta-analysis to estimate this association.

**Method:** A broad range of databases was searched through Aug. 31, 2014. Unpublished studies were also obtained. Study quality was rated with the Newcastle-Ottawa Scale. Random-effects models were used.

**Results:** Forty-two studies that included a total of 728,136 individuals (48,161 ADHD subjects; 679,975 comparison subjects) were retained. A significant association between obesity and ADHD was found for both children (odds ratio=1.20, 95% CI=1.05–1.37) and adults (odds ratio=1.55, 95% CI=1.32–1.81). The pooled prevalence of obesity was increased by about 70% in adults with ADHD (28.2%, 95% CI=22.8–34.4) compared with those without ADHD (16.4%,

95% CI=13.4–19.9), and by about 40% in children with ADHD (10.3%, 95% CI=7.9–13.3) compared with those without ADHD (7.4%, 95% CI=5.4–10.1). The significant association between ADHD and obesity remained when limited to studies 1) reporting odds ratios adjusted for possible confounding factors; 2) diagnosing ADHD by direct interview; and 3) using directly measured height and weight. Gender, study setting, study country, and study quality did not moderate the association between obesity and ADHD. ADHD was also significantly associated with overweight. Individuals medicated for ADHD were not at higher risk of obesity.

**Conclusions:** This study provides meta-analytic evidence for a significant association between ADHD and obesity/overweight. Further research should address possible underlying mechanisms and the long-term effects of ADHD treatments on weight in individuals with both ADHD and obesity.

*Am J Psychiatry* 2016; 173:34–43; doi: 10.1176/appi.ajp.2015.15020266

Obesity is a major public health issue, affecting 17% of children and 35% of adults in the United States (1), and obesity is one of the main causes of morbidity and mortality (2). It has been estimated that obesity-related medical costs in the United States will rise to \$48 billion–\$66 billion per year by 2030 (2). Therefore, it is a public health priority to understand the factors that contribute to obesity in order to design evidence-based prevention strategies (3).

Attention deficit hyperactivity disorder (ADHD) is another frequent and impairing condition, with a worldwide prevalence estimated at about 5% in school-age children (4) and persistence of impairing symptoms in adulthood in up to 65% of cases (5). Average annual incremental costs of ADHD in the United States have been calculated at \$143 billion–\$266 billion (6).

A number of studies have reported a significant association between obesity and ADHD (e.g., see references 7–10), but others failed to confirm this finding (e.g., see references 11–13). The putative association between ADHD and obesity might seem paradoxical because, rather than being hyperactive, individuals

with obesity are often described as “lazy” (14). However, the impulsivity and inattention that characterize ADHD might lead to dysregulated eating patterns with consequent weight gain (15). The role of possible confounders, including low socioeconomic status and comorbid mental health conditions, in explaining the association between obesity and ADHD is still unclear (7, 9, 12, 16). In addition, the role of age, gender, study setting, or study country is also uncertain (9, 10, 12, 13, 17–19).

Establishing whether, and to what extent, obesity and ADHD are associated is highly relevant from a clinical and public health standpoint. Because obesity and ADHD are common conditions, should a significant association be found, individuals affected by both would represent a sizable portion of the general population in need of care. In addition, the finding of a significant association would prompt research on underlying causal mechanisms. Finally, the association might have relevant treatment implications. Indeed, preliminary evidence from a previous study showed that treating ADHD with psychostimulants reduced obesity in individuals with

See related features: **Editorial** by Dr. Kooij (p. 1), **CME course** (p. 95), and **AJP Audio** (online)

both conditions, possibly because of a sustained decrease in impulsivity and improvement in organizational skills (15).

Given the uncertainty about the association between ADHD and obesity, as well as the roles of socioeconomic status, psychiatric comorbidities, age, gender, and study setting/country, we conducted a systematic review and meta-analysis to estimate the association between obesity and ADHD. We hypothesized a significant association, even after taking into account the aforementioned factors. We performed an additional meta-analysis of studies reporting data on overweight because its association with ADHD is also unclear (11–13, 20–22). Finally, to gain insights into the effect of ADHD medications, we meta-analyzed informative studies.

## METHOD

We followed the recommendations of the Meta-Analysis of Observational Studies in Epidemiology group (23) and the Preferred Reporting Items for Systematic Reviews and Meta-Analyses statement (24). The protocol of the present meta-analysis has been published previously (25).

### Search Methods

We searched a broad range of electronic databases from inception to Aug. 31, 2014, and also gathered unpublished material. Further details are reported in Appendix A1 in the data supplement that accompanies the online edition of this article.

### Selection Criteria

**Study type.** We included studies that reported the degree of association, expressed as an odds ratio, between obesity and ADHD, or data for calculating the odds ratio. We considered 1) population-based studies and 2) clinical studies of individuals with ADHD compared with non-ADHD controls. We did not include studies of individuals in bariatric clinics because these individuals represent a subsample of severely obese individuals, whereas our meta-analysis focuses on the association between ADHD and any degree of obesity. For longitudinal studies, we extracted data at baseline or at the earliest time point.

**Population.** Individuals with ADHD were those who had 1) ADHD as defined by DSM or hyperkinetic disorder as defined by ICD (26); 2) scores above a symptom threshold on a validated ADHD rating scale; 3) a positive answer to the question “Did your doctor ever tell you that you have ADHD?”; or 4) a medical record diagnosis of ADHD. The presence of psychiatric comorbidities, which are often associated with ADHD (27), was not an exclusion criterion. We excluded studies where ADHD was comorbid with specific disorders affecting weight (e.g., Prader-Willi syndrome).

Comparison subjects were participants without ADHD.

**Outcomes.** The primary outcome measure was the odds ratio expressing the association between obesity and ADHD. Obesity was defined either by self-report or medical record diagnosis or by body mass index (BMI), derived from self-

reported or directly measured weight and height, above a preset value. In adults this value was a BMI  $\geq 30$ , as defined by the World Health Organization (28). In children there is no consensus on the definition of obesity (29). Whereas some authors have used BMI  $>95$ th,  $>97$ th, or  $>98$ th percentile for age and sex, others have relied on percentile curves that pass through the points of a BMI score of 30 (30). Therefore, we included all available definitions. Authors of studies reporting BMI or height and weight, but not obesity rates, were asked to provide obesity rates based on the following definitions: adults: BMI  $\geq 30$ ; children: BMI  $>95$ th percentile for age and sex.

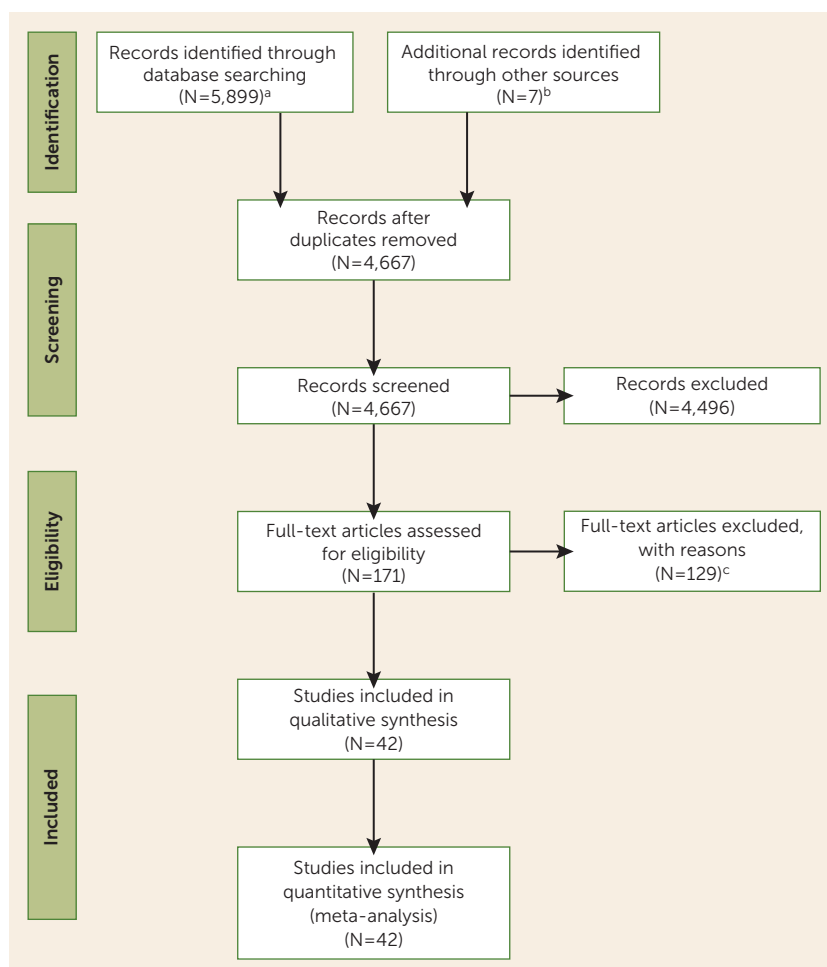
The secondary outcome measure was the odds ratio expressing the association between ADHD and overweight, defined either by self-report or medical record diagnosis or by a BMI  $\geq 25$  in adults or  $>85$ th percentile in children (31), derived from self-reported or directly measured weight and height. Therefore, “overweight” included “obesity.”

### Selection of Studies, Data Extraction, and Assessment of Study Quality

These steps were performed blindly by S.C. and C.R.M.M., as detailed in Appendix A1 in the online data supplement. Study quality was rated using the Newcastle-Ottawa Scale (32), as recommended by the Cochrane collaboration (33) (see Appendix A2 in the data supplement).

### Statistical Analysis

Odds ratios were extracted when available or calculated from available data. Meta-analyses used random-effects models. We chose a random-effects model because it allows the true population effect size to differ among studies. First, we meta-analyzed unadjusted odds ratios across all studies. We then conducted subgroup meta-analyses of studies 1) of children and adolescents (because of a paucity of data, it was not possible to separately analyze children and adolescents); 2) of adults; 3) using a formal diagnosis of ADHD; that is, based on a psychiatric interview addressing DSM or ICD criteria; 4) where obesity was defined based on directly measured height and weight; 5) of population-based samples; and 6) of clinical samples. To represent the highest quality studies, we pooled studies with both a formal ADHD diagnosis and direct measures of height and weight. We then meta-analyzed adjusted odds ratios. The confounders adjusted for included psychiatric comorbidities, such as depression, and socioeconomic status; these varied across studies (see Table S1 in the data supplement). Additionally, we performed meta-regression analyses including unadjusted odds ratios as outcome and year of study publication, number of participants with and without ADHD, age group (children/adolescents, adults), gender, study setting (clinical, population-based), study country, and the rating on the Newcastle-Ottawa Scale as regressors. For the outcome “overweight,” we performed only a meta-analysis of unadjusted odds ratios because there were insufficient data for other analyses. We also performed meta-analyses in medicated and unmedicated subjects, selecting studies that reported both data in medicated and nonmedicated individuals.

**FIGURE 1. Flow Diagram of Study Selection, as Specified by the Preferred Reporting Items for Systematic Reviews and Meta-Analyses (PRISMA) Statement**

<sup>a</sup> Results for each electronic database are reported in Appendix A1 in the online data supplement.

<sup>b</sup> These refer to three unpublished studies (36–38) plus four studies (9, 11, 47, 50) that were unpublished when the search was first conducted and were subsequently published; all seven studies were included in the meta-analysis.

<sup>c</sup> References of excluded studies are reported, with reasons for exclusion, in Table S3 in the data supplement.

The meta-analyses and meta-analytic regressions were weighted by the reciprocal of the variance of the effect size, which gives greater weight to larger studies (34). We used the  $I^2$  index to assess the heterogeneity of effect sizes. The  $I^2$  index estimates the percentage of variation among effect sizes that can be attributed to heterogeneity. A significant  $I^2$  indicates that the degree of heterogeneity is greater than would be expected by chance. We used Egger's test (35) to assess publication biases.

Finally, we calculated the pooled prevalence of obesity in participants with and without ADHD, and in subjects medicated and nonmedicated for ADHD, using random-effects models. Analyses were performed using STATA 13.1 (SAS Institute, Cary, N.C.) and Comprehensive Meta-Analysis (<http://www.meta-analysis.com/index.php>).

## RESULTS

Figure 1 shows the study selection process. We retained 42 studies (7–13, 16–18, 20–22, 36–64) for the meta-analysis,

comprising 728,136 participants: 48,161 with ADHD (46,115 children; 2,046 adults) and 679,975 comparison subjects (616,228 children; 63,747 adults) (see Table S2 in the online data supplement). One study (51) presented data only for overweight rather than for obesity. Studies not included in the meta-analysis after assessment of the full text are listed, with reasons for exclusion, in Table S3 in the data supplement.

The results of all analyses are summarized in Table 1, which reports tests of heterogeneity and publication bias (Egger's test). Our first analysis of all available studies (N=41) reporting unadjusted odds ratios for obesity found a significant pooled odds ratio for obesity in individuals with ADHD compared with controls (odds ratio=1.30, 95% CI=1.16–1.46) (Figure 2). Heterogeneity was high and significant, while Egger's test was not significant. After removing one clear outlier (8), results remained significant (odds ratio=1.3, 95% CI=1.1–1.4). Because four studies (43, 45, 59, 64) used unscreened population-based control groups, which may have included individu-

als with ADHD, we repeated the analysis without these studies. Results were unchanged (odds ratio=1.3, 95% CI=1.1–1.4).

In both analyses limited to children/adolescents and adults, the pooled odds ratios were significant (odds ratio=1.20, 95% CI=1.05–1.37; and odds ratio=1.55, 95% CI=1.32–1.81, respectively; for further details, see Appendix A3 and Figures S1–S2 in the online data supplement).

The pooled prevalence of obesity was increased by about 70% in adults with ADHD (28.2%, 95% CI=22.8–34.4) compared with adults without ADHD (16.4%, 95% CI=13.4–19.9) and by about 40% in children with ADHD (10.3%, 95% CI=7.9–13.3) compared with children without ADHD (7.4%, 95% CI=5.4–10.1).

Subgroup meta-analyses of studies 1) using a formal diagnosis of ADHD (odds ratio=1.36, 95% CI=1.12–1.66, Figure S3 in the data supplement); 2) with measured height and weight (odds ratio=1.32, 95% CI=1.06–1.66, Figure S4 in the data supplement); 3) in population-based samples (odds ratio=1.24, 95% CI=1.10–1.39, Figure S5 in the data supplement);

**TABLE 1. Summary of Results Showing Pooled Odds Ratios in the Main Meta-Analysis and in the Subgroup Meta-Analyses**

Outcome	Type of Analysis	N Studies	Odds Ratio	95% CI	p	Heterogeneity			Egger's Test (Publication Bias)	
						$\chi^2$	p	I <sup>2</sup>	t	p
Obesity	All available studies	41	1.30	1.16–1.46	<0.0005	197.22	<0.0005	79.7	1.78	0.083
Obesity	Limited to children/adolescents	30	1.20	1.05–1.37	0.009	164.26	<0.0005	82.3	0.95	0.349
Obesity	Limited to adults	11	1.55	1.32–1.81	<0.0005	13.90	0.178	28.1	1.79	0.106
Obesity	Limited to studies with a formal diagnosis of ADHD	25	1.36	1.12–1.66	0.002	81.68	<0.0005	70.6	0.44	0.66
Obesity	Limited to studies using measured height and weight	24	1.32	1.06–1.66	0.015	110.81	<0.0005	79.2	2.44	0.023
Obesity	Limited to studies with a formal diagnosis of ADHD and measured height and weight	17	1.47	1.12–1.93	0.006	42.26	<0.0005	62.1	0.44	0.667
Obesity	Limited to population-based studies	26	1.24	1.10–1.39	0.001	146.77	<0.0005	83.0	1.01	0.320
Obesity	Limited to clinical studies	15	1.61	1.10–2.35	0.015	43.82	<0.0005	68.1	0.86	0.407
Obesity	Limited to studies reporting adjusted odds ratios	16	1.27	1.11–1.44	<0.0005	24.69	0.054	39.3	2.09	0.056
Overweight (including obesity)	All available studies	22	1.17	1.01–1.36	0.042	94.69	<0.0005	77.8	2.44	0.024
Obesity	Limited to unmedicated participants	12	1.43	1.23–1.67	<0.0005	21.15	0.032	48.0	−0.29	0.781
Obesity	Limited to medicated participants	12	1.00	0.87–1.15	0.964	22.89	0.018	51.9	−1.73	0.115

and 4) in clinical samples (odds ratio=1.61, 95% CI=1.10–2.35, Figure S6 in the data supplement) each found a statistically significant pooled odds ratio (see Appendix A3 in the data supplement). The meta-analysis limited to studies with a formal diagnosis of ADHD and direct measures of height and weight confirmed a significant association between ADHD and obesity (odds ratio=1.47, 95% CI=1.12–1.93, see Figure S7 and Appendix A3 in the data supplement).

The meta-analysis of adjusted odds ratios found a statistically significant pooled odds ratio (odds ratio=1.27, 95% CI=1.11–1.44, Figure 3). The heterogeneity and publication bias statistics were not significant.

Meta-regression analysis showed that year of study publication, number of participants with and without ADHD, age group, gender, study setting, and rating on the Newcastle-Ottawa Scale did not significantly influence the pooled odds ratios. The effect of study country, based on a total of 17 countries, was shy of statistical significance ( $p=0.0506$ ) (see Appendix A3 in the online data supplement).

The meta-analysis of odds ratios for overweight (22 studies) found a statistically significant pooled odds ratio (odds ratio=1.17, 95% CI=1.01–1.36, Figure S8 in the data supplement); heterogeneity was high and significant, while Egger's test was not significant.

Data on both medicated and nonmedicated participants with ADHD were available from 12 studies. The association between ADHD and obesity was significant for unmedicated (odds ratio=1.43, 95% CI=1.23–1.67, Figure 4A) but not for medicated (odds ratio=1.00, 95% CI=0.87–1.15, Figure 4B) individuals with ADHD. Further details are reported in Appendix A3 in the data supplement.

The pooled prevalence of obesity in participants medicated for ADHD (13.8%, 95% CI=11.4–16.6) was decreased by

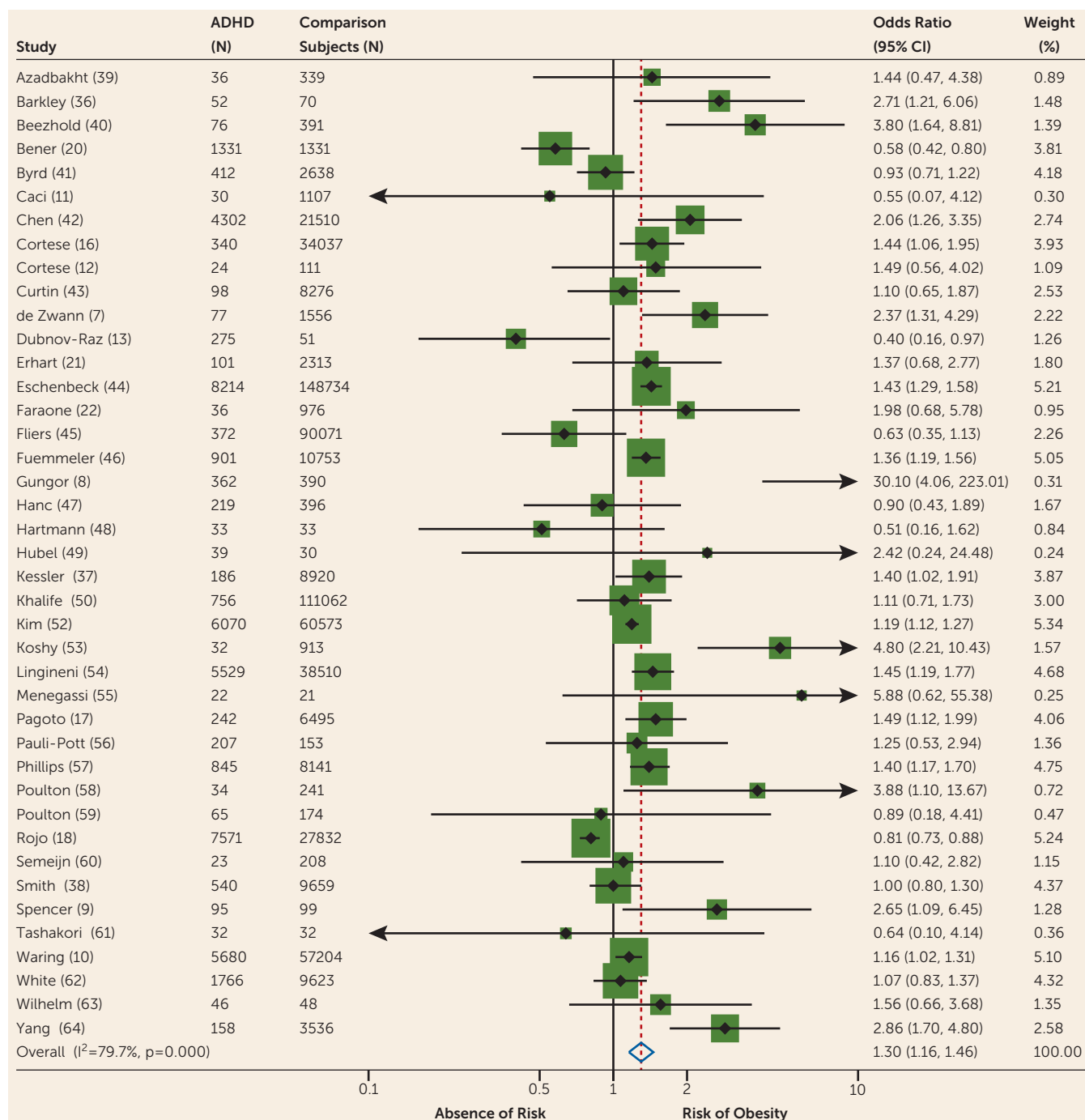
about 40% compared with those not medicated (19.2%, 95% CI=16.1–22.7).

## DISCUSSION

To our knowledge, this is the first meta-analysis assessing the relationship between ADHD and obesity. We found a statistically significant association between these two conditions. The pooled prevalence of obesity was increased by about 70% in adults with ADHD and 40% in children with ADHD compared with subjects without ADHD. These figures, considering the high prevalence of ADHD and the impairment associated with obesity, translate into a conspicuous burden for society.

A significant association emerged also when pooling odds ratios adjusted for possible confounders, including socioeconomic status and comorbid psychiatric conditions (65). This conclusion should be considered with caution because the type and number of factors adjusted for varied across studies; future research should systematically adjust for a broad set of possible confounders. Special attention should be given to common ADHD comorbid conditions, such as depression, that are also associated with obesity.

Using subgroup meta-analyses, we clarified the role of other factors. We found that the significant association between obesity and ADHD persisted even when focusing only on studies with a formal diagnosis of ADHD, making it unlikely that our results were biased by nonoptimal procedures to detect ADHD, in particular self-reported diagnoses. Another subgroup meta-analysis showed that results did not substantially change when considering only obesity values calculated from directly measured height and weight, suggesting that lower-quality procedures for measuring obesity did not bias our results.

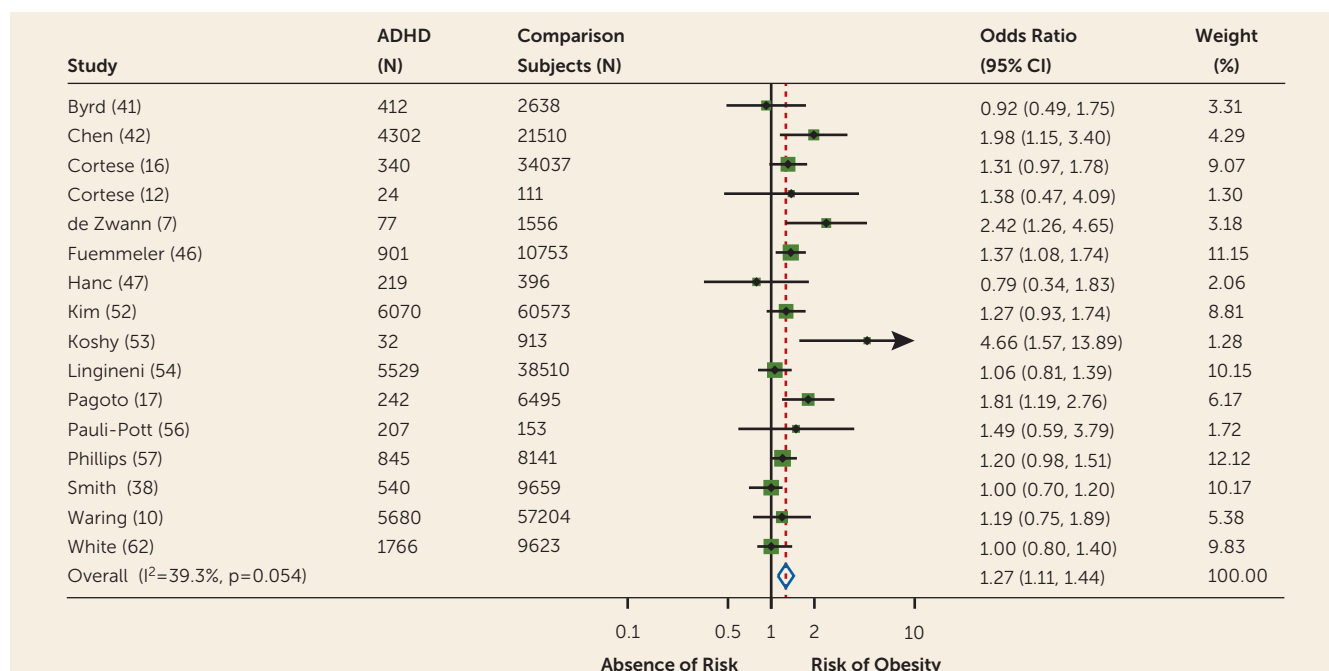
**FIGURE 2. Unadjusted Odds Ratios Expressing the Association Between Obesity and ADHD<sup>a</sup>**

<sup>a</sup> The area of each square is proportional to the weight that the individual study contributed to the meta-analysis. Weights are from random-effects analysis.

Our meta-regression analysis shed light on the role of additional factors. Prior work has suggested that the association between ADHD and obesity is influenced by gender. One study (19) of children and adolescents reported a significant association between ADHD symptoms and obesity only in adolescent females; two other studies (41, 52) found higher odds ratios in unmedicated female adolescents than in male adolescents. According to some authors (52), higher

rates of binge eating in females may mediate this gender effect. But, in contrast to these scattered findings, we showed that gender did not significantly affect the association between ADHD and obesity.

We also found that age group (children/adolescents versus adults) did not influence the association between ADHD and obesity, suggesting that the relationship is already present in childhood. Because only three studies (43–45) presented data

FIGURE 3. Adjusted Odds Ratios Expressing the Association Between Obesity and ADHD<sup>a</sup>

<sup>a</sup> The area of each square is proportional to the weight that the individual study contributed to the meta-analysis. Weights are from random-effects analysis.

in children and adolescents separately (for details, see Appendix A4 in the online data supplement), we could not compare odds ratios in these two developmental periods. It is possible that the significant association between ADHD and obesity in the children/adolescents group was driven either by the primary school group or by the adolescent group. Therefore, further research focusing separately on these two age groups is warranted.

Consistent with our meta-regression analysis, our subgroup analysis showed that the association between obesity and ADHD was similar in clinical and population-based samples; therefore, putative clinical referral biases cannot account for the association.

The effect of study country failed to reach statistical significance. This conclusion should be considered with caution because for the majority of countries only one or two studies were available. Finally, study quality was not a significant predictor in the meta-regression analyses, which is consistent with our subgroup meta-analysis showing the persistence of significant results when including only the most rigorous studies; that is, those with a formal ADHD diagnosis and in which height and weight were measured directly. It is also noteworthy that publication bias was not significant in the majority of the meta-analyses performed.

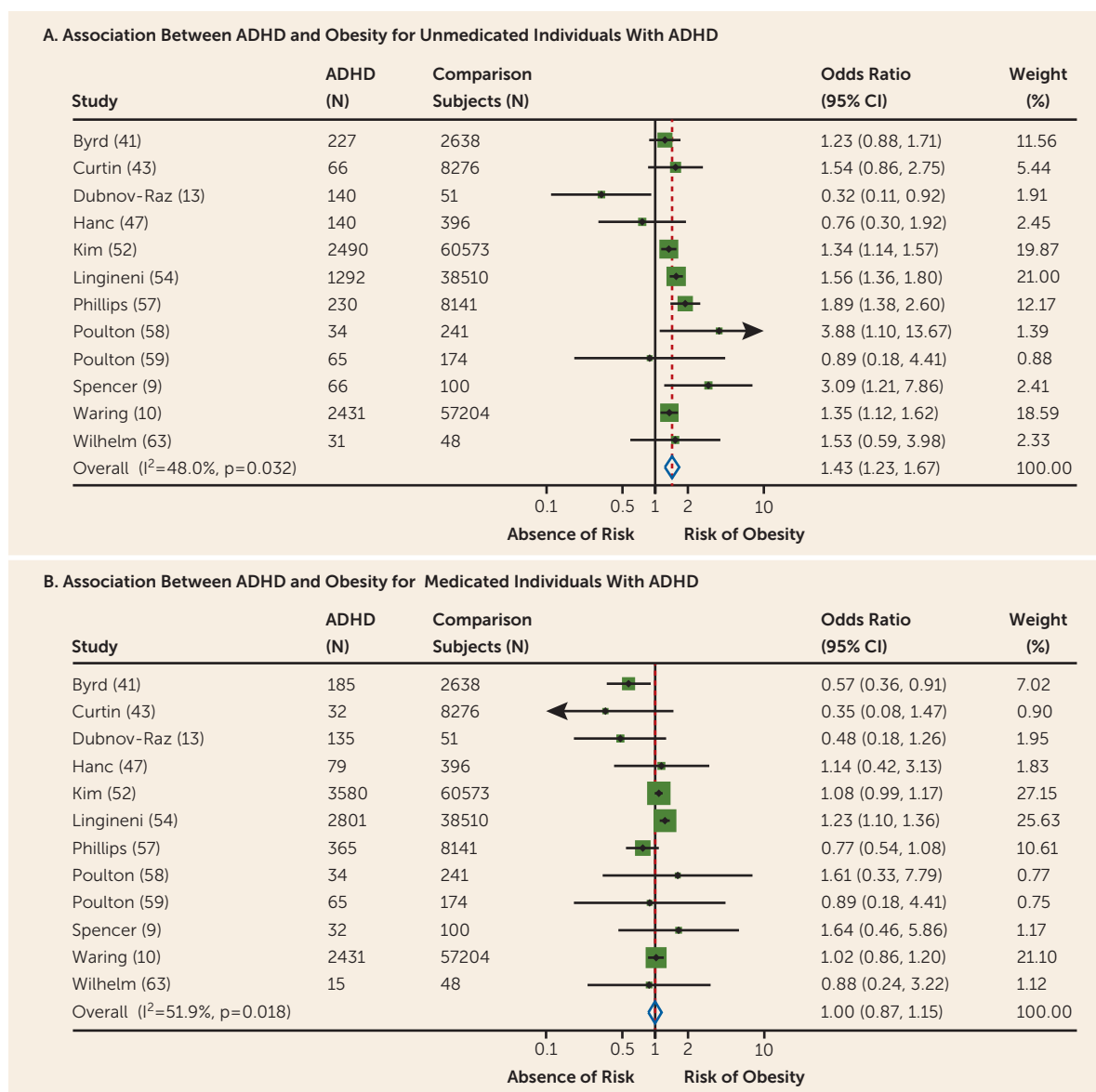
We also found a significant association between ADHD and overweight, suggesting that future research in the field should examine less severe grades of weight excess in addition to obesity.

In the analyses focused on medication status, we found a nonsignificant association in individuals pharmacologically treated for ADHD, who had rates of obesity that were decreased by about 40% compared with those not treated.

These results should be considered with caution because they are based on a subset of studies (N=12), although the total number of participants was still high (9,754 medicated individuals with ADHD; 7,212 nonmedicated individuals with ADHD; 176,352 individuals without ADHD). Importantly, our results based on correlational studies cannot prove that pharmacological treatment for ADHD decreases the risk of obesity associated with ADHD. Overall, there is limited empirical evidence on the short- and long-term effects of psychostimulants on weight specifically focusing on individuals with ADHD and obesity. We are aware of only one naturalistic study (66) showing that treating comorbid ADHD in adults with a lengthy history of unsuccessful weight loss significantly improved weight loss at 15 months. In that study, appetite suppression vanished within 2 months after the start of the treatment. The study authors argue that the temporary anorexic effect of psychostimulants could not account for the observed improvement. Rather, it is possible that the improvements in executive functioning and decreased impulsivity led to more regular eating patterns, with consequent better adherence to diet. Given the scant available research, our results should prompt further investigation on the short- and long-term effects of psychostimulants on weight, aimed at establishing whether weight reduction is causally related to direct metabolic effects of psychostimulants, to long-term normalization of eating patterns, or to other indirect mechanisms. The effects on obesity of nonpharmacological treatments for ADHD should be systematically investigated as well.

The cross-sectional data that we analyzed do not permit firm conclusions about causality in the association between ADHD and obesity. Preliminary longitudinal evidence



**FIGURE 4. Forest Plot Showing the Results of the Subgroup Meta-Analyses of Studies Including Nonmedicated Participants With ADHD Only and Medicated Participants With ADHD Only<sup>a</sup>**

<sup>a</sup> The area of each square is proportional to the weight that the individual study contributed to the meta-analysis. Weights are from random-effects analysis.

suggests that ADHD may temporarily precede, and thus contribute to, obesity. A prospective study of 8,106 children (50) concluded that childhood ADHD symptoms predicted subsequent obesity, rather than the opposite. Another longitudinal study (12) found that men with a childhood diagnosis of ADHD had a twofold higher rate of obesity compared with those without such a diagnosis. However, because anthropometric data at baseline were not available, the results of that study are equivocal.

Lacking a clear signal from longitudinal studies, several possibilities arise: 1) ADHD could increase the risk of obesity; 2) ADHD and obesity share common biological risk factors, including genetic variants (67, 68); and 3) obesity or factors associated with it cause or mimic ADHD.

With regard to the first hypothesis, both the impulsive and inattentive components of ADHD could increase the risk of obesity (15). Deficient inhibitory control, which is an expression of impulsivity and characterizes a large subgroup of individuals with ADHD, could reinforce abnormal eating behaviors that, in turn, would increase the likelihood of obesity (15). Inattention and poor planning might cause difficulties in adhering to regular eating patterns and dietary regimens (15); additionally, lack of attention may be associated with lack of awareness of food intake. The hyperactive component of ADHD, as motor overactivity, would intuitively be considered to decrease, rather than increase, the risk of obesity, assuming that it increases energy expenditure and weight loss. However, ADHD motor hyperactivity is not constant but is modulated by the context. For

example, it decreases while watching television (69), and children with ADHD have been shown to watch more television and engage in less physical activity than comparison subjects without ADHD (52). In addition, hyperactivity linked to restless behaviors may also include abnormal eating patterns. Given the paucity of data, we could not assess the effect of ADHD subtypes, ADHD symptom severity or frequency, and other variables (e.g., watching television, sedentary activity) related to ADHD and obesity. These represent areas of future research for the field.

The hypothesis of common neurobiological dysfunctions in obesity and ADHD reflects the recent notion that many conditions classically thought to be nervous system disorders also include alterations in other physiological systems (70). ADHD and obesity may share dopaminergic dysfunctions underpinning reward deficiency processing, but this understanding needs to be better evaluated (71). Interestingly, a “reward deficiency syndrome,” characterized by insufficient dopamine-related natural reinforcement that leads to “unnatural” immediate rewards (such as inappropriate eating), has been reported in both ADHD and obesity (71). In addition, oxidative stress, which is linked to obesity, has also been associated with ADHD (72). Moreover, treatment with omega-3 fatty acids, a potent antioxidant, yields significant, albeit modest, reductions in ADHD symptoms (73).

Finally, it is possible that factors associated with obesity lead to ADHD-like symptoms. Both sleep-disordered breathing (71) and shorter or later sleep have been reported to manifest with ADHD-like symptoms.

Our results have important clinical and public health implications. The obesity associated with ADHD might explain why patients with ADHD are at increased risk for higher cholesterol levels and higher blood pressure (9). Assessing the risk for obesity should be part of the assessment and management of ADHD. Clinicians should also screen for ADHD in individuals who are referred for obesity, especially those with a previous history of unsuccessful weight-loss attempts. Although obesity has been found to be associated with other mental health conditions, such as depression (74) and anxiety (75), its association with ADHD might be particularly significant for its potential treatment implications.

Our results should be considered in the context of some limitations. First, we endeavored to include unpublished studies, asking experts in the field to provide relevant data, but we could not contact all experts. The inclusion of data from unpublished studies can itself introduce bias due to the willingness of investigators of located unpublished studies to provide data (18). Second, the definition of obesity in studies in children was based on different BMI thresholds, reflecting a lack of consensus in the field. Third, the exclusion of studies in bariatric samples, although sound, may have led to an underestimation of the strength of the association between ADHD and obesity. Fourth, we focused on obesity/overweight, although a bimodal distribution of weight status in ADHD is possible, whereby ADHD is associated with both obesity/overweight and underweight. This should be assessed in future systematic reviews and meta-analyses.

Finally, although we aimed to reduce study heterogeneity by means of subgroup meta-analyses, heterogeneity was still significant in these subgroup analyses. However, in the analysis including studies with adjusted odds ratios, the degree of heterogeneity was not significant.

## CONCLUSIONS

We found meta-analytic evidence of a significant association between obesity/overweight and ADHD, regardless of possible confounders. Mediation effects and causal mechanisms underlying the association, as well as the long-term effects of ADHD medications on weight status in individuals with obesity and ADHD, deserve further attention because of their important public health implications.

## AUTHOR AND ARTICLE INFORMATION

From the Department of Psychology, Developmental Brain-Behavior Laboratory, University of Southampton, Southampton, United Kingdom; IRCCS Stella Maris, Scientific Institute of Child Neurology and Psychiatry, Calambrone, Pisa, Italy; the Child Study Center, New York University, New York; the Department of Psychiatry, Hospital de Clinicas de Porto Alegre, Federal University of Rio Grande do Sul, Brazil; the Departments of Psychiatry and Behavioral Sciences and of Neuroscience and Physiology, College of Medicine, State University of New York Upstate Medical University, Syracuse; the K.G. Jebsen Centre for Research on Neuropsychiatric Disorders, Department of Biomedicine, University of Bergen, Bergen, Norway; the Cambridgeshire and Peterborough National Health Service Foundation Trust, Cambridge, United Kingdom; and the National Institute of Developmental Psychiatry for Children and Adolescents, São Paulo, Brazil.

Address correspondence to Dr. Cortese (samuele.cortese@gmail.com).

Presented in part at the 2015 annual meeting of the American Professional Society of ADHD and Related Disorders, Washington, D.C., Jan. 16–18, 2015, and the 5th World Congress on ADHD, Glasgow, Scotland, May 28, 2015.

The authors thank the following colleagues for providing additional information on included studies: Ahmad Esmailzadeh, Ph.D., Sarah Anderson, Ph.D., Bonnie Beezhold, Ph.D., Russel Barkley, Ph.D., Hervé Caci, M.D., Ph.D., Alex Chen, M.D., Martina de Zwann, M.D., Gal Dubnov-Raz, M.D., M.Sc., Eike Eschenbeck, Ph.D., Bernard Fuemmeler, Ph.D., M.P.H., Serdal Gungor, M.D., Ellen Fliers, M.D., Ph.D., Nanda Rommelse, Ph.D., Tomasz Hanc, Ph.D., Andrea Sabrina Hartmann, Ph.D., Alison Poulton, M.D., Alina Rodriguez, Ph.D., Sherry Pagoto, Ph.D., Laura Schieve, Ph.D., Keydra Oladapo, Ph.D., Luis Rojo, Ph.D., Evert Semeijn, Ph.D., Rosemary Tannock, Ph.D., Megan Smith, Ph.D., Russel Viner, M.D., Ph.D., Molly E. Waring, Ph.D., Christine Wilhelm, Dr. Dipl.-Psych., and Beate Herpertz-Dahlmann, M.D., Ph.D. The authors are also grateful to Corrado Barbui, M.D., Ph.D., for advice on methodological issues.

Dr. Cortese has received royalties from Aargon Healthcare Italy for online educational activity. Dr. Moreira-Maia has received research support from Conselho Nacional de Desenvolvimento Científico e Tecnológico (CNPq) and Coordenação de Aperfeiçoamento de Pessoal de Nível Superior (CAPES); has served as a speaker to and developed educational material for Novartis; has received travel awards from the Health Technology Assessment Institute and Universidade Federal do Rio Grande do Sul; and has received travel and registration support for the World Congress on ADHD from the World Federation of ADHD. Dr. Rohde has served as a speaker, adviser, or consultant for Eli Lilly, Janssen-Cilag, Novartis, and Shire; receives authorship royalties from ArtMed and Oxford University Press; received travel awards from Shire; and receives research support from Brazilian government institutions including CNPq, Fundação de Amparo à



Pesquisa do Estado do Rio Grande do Sul, Hospital de Clínicas de Porto Alegre, and CAPES. The ADHD and Juvenile Bipolar Disorder Outpatient Programs, for which Dr. Rohde serves as chair, has received unrestricted educational and research support from Eli Lilly, Janssen-Cilag, Novartis, and Shire. Dr. Faraone has received income, travel expenses, or research support from or served on advisory boards or participated in CME programs for Akili Interactive Labs, Alcobra, CogCubed, Eli Lilly, Impax, Ironshore, Janssen, McNeil, NeuroLifeSciences, Neurovance, Novartis, Otsuka, Pfizer, Shire, and VAYA Pharma; he has received research support from NIH and the K.G. Jebsen Centre for Research on Neuropsychiatric Disorders; and he receives book royalties from Elsevier, Guilford Press, and Oxford University Press. Dr. Faraone's institution is seeking a patent for the use of sodium-hydrogen exchange inhibitors in the treatment of ADHD. Drs. Morcillo-Peñalver and St. Fleur report no financial relationships with commercial interests.

Received Feb. 28, 2015; revision received May 23, 2015; accepted July 2, 2015; published online Aug. 28, 2015.

## REFERENCES

- Ogden CL, Carroll MD, Kit BK, et al: Prevalence of childhood and adult obesity in the United States, 2011-2012. *JAMA* 2014; 311:806-814
- Wang YC, McPherson K, Marsh T, et al: Health and economic burden of the projected obesity trends in the USA and the UK. *Lancet* 2011; 378:815-825
- World Health Organization: Childhood overweight and obesity. <http://www.who.int/dietphysicalactivity/childhood/en/>
- Polanczyk G, de Lima MS, Horta BL, et al: The worldwide prevalence of ADHD: a systematic review and meta-regression analysis. *Am J Psychiatry* 2007; 164:942-948
- Faraone SV, Biederman J, Mick E: The age-dependent decline of attention deficit hyperactivity disorder: a meta-analysis of follow-up studies. *Psychol Med* 2006; 36:159-165
- Doshi JA, Hodgkins P, Kahle J, et al: Economic impact of childhood and adult attention-deficit/hyperactivity disorder in the United States. *J Am Acad Child Adolesc Psychiatry* 2012; 51:990-1002.e2
- de Zwaan M, Gruss B, Müller A, et al: Association between obesity and adult attention-deficit/hyperactivity disorder in a German community-based sample. *Obes Facts* 2011; 4:204-211
- Güngör S, Celiloglu OS, Raif SG, et al: Malnutrition and obesity in children with ADHD. *J Atten Disord* 2013 (Epub ahead of print, Mar 8, 2013)
- Spencer TJ, Faraone SV, Tarko L, et al: Attention-deficit/hyperactivity disorder and adverse health outcomes in adults. *J Nerv Ment Dis* 2014; 202:725-731
- Waring ME, Lapane KL: Overweight in children and adolescents in relation to attention-deficit/hyperactivity disorder: results from a national sample. *Pediatrics* 2008; 122:e1-e6
- Caci HM, Morin AJ, Tran A: Prevalence and correlates of attention deficit hyperactivity disorder in adults from a French community sample. *J Nerv Ment Dis* 2014; 202:324-332
- Cortese S, Ramos Olazagasti MA, Klein RG, et al: Obesity in men with childhood ADHD: a 33-year controlled, prospective, follow-up study. *Pediatrics* 2013; 131:e1731-e1738
- Dubnov-Raz G, Perry A, Berger I: Body mass index of children with attention-deficit/hyperactivity disorder. *J Child Neurol* 2011; 26:302-308
- Foster GD, Wadden TA, Makris AP, et al: Primary care physicians' attitudes about obesity and its treatment. *Obes Res* 2003; 11:1168-1177
- Cortese S, Castellanos FX: The relationship between ADHD and obesity: implications for therapy. *Expert Rev Neurother* 2014; 14: 473-479
- Cortese S, Faraone SV, Bernardi S, et al: Adult attention-deficit hyperactivity disorder and obesity: epidemiological study. *Br J Psychiatry* 2013; 203:24-34
- Pagoto SL, Curtin C, Lemon SC, et al: Association between adult attention deficit/hyperactivity disorder and obesity in the US population. *Obesity (Silver Spring)* 2009; 17:539-544
- Rojo L, Ruiz E, Domínguez JA, et al: Comorbidity between obesity and attention deficit/hyperactivity disorder: population study with 13-15-year-olds. *Int J Eat Disord* 2006; 39:519-522
- van Egmond-Fröhlich AW, Widhalm K, de Zwaan M: Association of symptoms of attention-deficit/hyperactivity disorder with childhood overweight adjusted for confounding parental variables. *Int J Obes* 2012; 36:963-968
- Bener A, Kamal M: Predict attention deficit hyperactivity disorder? Evidence-based medicine. *Glob J Health Sci* 2014; 6:47-57
- Erhart M, Herpertz-Dahlmann B, Wille N, et al: Examining the relationship between attention-deficit/hyperactivity disorder and overweight in children and adolescents. *Eur Child Adolesc Psychiatry* 2012; 21:39-49
- Faraone SV, Lecendreux M, Konofal E: Growth dysregulation and ADHD: an epidemiologic study of children in France. *J Atten Disord* 2012; 16:572-578
- Stroup DF, Berlin JA, Morton SC, et al: Meta-analysis of observational studies in epidemiology: a proposal for reporting. Meta-analysis Of Observational Studies in Epidemiology (MOOSE) group. *JAMA* 2000; 283:2008-2012
- Liberati A, Altman DG, Tetzlaff J, et al: The PRISMA statement for reporting systematic reviews and meta-analyses of studies that evaluate healthcare interventions: explanation and elaboration. *BMJ* 2009; 339:b2700
- Cortese S, Moreira Maia CR, Rohde LA, et al: Prevalence of obesity in attention-deficit/hyperactivity disorder: study protocol for a systematic review and meta-analysis. *BMJ Open* 2014; 4:e004541
- World Health Organization: The ICD-10 Classification of Mental and Behavioral Disorders: Clinical Descriptions and Diagnostic Guidelines. Geneva, 1992
- Biederman J, Faraone SV: Attention-deficit hyperactivity disorder. *Lancet* 2005; 366:237-248
- World Health Organization: Obesity and overweight. <http://www.who.int/mediacentre/factsheets/fs311/en/>
- Rolland-Cachera MF: Childhood obesity: current definitions and recommendations for their use. *Int J Pediatr Obes* 2011; 6:325-331
- Cole TJ, Bellizzi MC, Flegal KM, et al: Establishing a standard definition for child overweight and obesity worldwide: international survey. *BMJ* 2000; 320:1240-1243
- Centers for Disease Control and Prevention: Defining Childhood Obesity. <http://www.cdc.gov/obesity/childhood/basics.html>
- Ottawa Hospital Research Institute: The Newcastle-Ottawa Scale (NOS) for assessing the quality of nonrandomised studies in meta-analyses. <http://www.ohri.ca/programs/clinicalEpidemiology/oxford.htm>
- Higgins JPT, Green S (eds): *Cochrane Handbook for Systematic Reviews of Interventions*, version 5.1.0. The Cochrane Collaboration; 2011. [www.cochrane-handbook.org](http://www.cochrane-handbook.org)
- DerSimonian R, Laird N: Meta-analysis in clinical trials. *Control Clin Trials* 1986; 7:177-188
- egger M, Davey Smith G, Schneider M, et al: Bias in meta-analysis detected by a simple, graphical test. *BMJ* 1997; 315:629-634
- Barkley RA: Unpublished data from Barkley RA, Murphy KR, Fischer MA. ADHD in Adults: What the Science Says. New York: Guilford, 2010
- Kessler and collaborators: Unpublished data from the National Comorbidity Survey Replication (NCS-R), 2001-2003. <http://www.icpsr.umich.edu/icpsrweb/CPES/analysis.jsp>
- Smith M: Unpublished data from the Canadian National Longitudinal Survey of Children and Youth. <http://www23.statcan.gc.ca/imdb/p2SV.pl?Function=getSurvey&SDDS=4450>. 2010
- Azadbakht L, Esmailzadeh A: Dietary patterns and attention deficit hyperactivity disorder among Iranian children. *Nutrition* 2012; 28: 242-249
- Beezhold BL, Johnston CS, Nocht KA: Sodium benzoate-rich beverage consumption is associated with increased reporting of ADHD symptoms in college students: a pilot investigation. *J Atten Disord* 2014; 18:236-241

41. Byrd HC, Curtin C, Anderson SE: Attention-deficit/hyperactivity disorder and obesity in US males and females, age 8-15 years: National Health and Nutrition Examination Survey 2001-2004. *Pediatr Obes* 2013; 8:445-453
42. Chen HJ, Lee YJ, Yeh GC, et al: Association of attention-deficit/hyperactivity disorder with diabetes: a population-based study. *Pediatr Res* 2013; 73:492-496
43. Curtin C, Bandini LG, Perrin EC, et al: Prevalence of overweight in children and adolescents with attention deficit hyperactivity disorder and autism spectrum disorders: a chart review. *BMC Pediatr* 2005; 5:48
44. Eschenbeck H, Kohlmann CW, Dudey S, et al: Physician-diagnosed obesity in German 6- to 14-year-olds: prevalence and comorbidity of internalising disorders, externalising disorders, and sleep disorders. *Obes Facts* 2009; 2:67-73
45. Fliers EA, Buitelaar JK, Maras A, et al: ADHD is a risk factor for overweight and obesity in children. *J Dev Behav Pediatr* 2013; 34:566-574
46. Fuemmeler BF, Østbye T, Yang C, et al: Association between attention-deficit/hyperactivity disorder symptoms and obesity and hypertension in early adulthood: a population-based study. *Int J Obes* 2011; 35:852-862
47. Hanć T, Słopeń A, Wolańczyk T, et al: ADHD and overweight in boys: cross-sectional study with birth weight as a controlled factor. *Eur Child Adolesc Psychiatry* 2015; 24:41-53
48. Hartmann AS, Rief W, Hilbert A: Laboratory snack food intake, negative mood, and impulsivity in youth with ADHD symptoms and episodes of loss of control eating. Where is the missing link? *Appetite* 2012; 58:672-678
49. Hubel R, Jass J, Marcus A, et al: Overweight and basal metabolic rate in boys with attention-deficit/hyperactivity disorder. *Eat Weight Disord* 2006; 11:139-146
50. Khalife N, Kantomaa M, Glover V, et al: Childhood attention-deficit/hyperactivity disorder symptoms are risk factors for obesity and physical inactivity in adolescence. *J Am Acad Child Adolesc Psychiatry* 2014; 53:425-436
51. Kim EJ, Kwon HJ, Ha M, et al: Relationship among attention-deficit hyperactivity disorder, dietary behaviours and obesity. *Child Care Health Dev* 2014; 40:698-705
52. Kim J, Mutyala B, Agiovlasitis S, et al: Health behaviors and obesity among US children with attention deficit hyperactivity disorder by gender and medication use. *Prev Med* 2011; 52:218-222
53. Koshy G, Delpisheh A, Brabin BJ: Childhood obesity and parental smoking as risk factors for childhood ADHD in Liverpool children. *Atten Defic Hyperact Disord* 2011; 3:21-28
54. Lingineni RK, Biswas S, Ahmad N, et al: Factors associated with attention deficit/hyperactivity disorder among US children: results from a national survey. *BMC Pediatr* 2012; 12:50
55. Menegassi M, Mello ED, Guimarães LR, et al: Food intake and serum levels of iron in children and adolescents with attention-deficit/hyperactivity disorder. *Rev Bras Psiquiatr* 2010; 32:132-138
56. Pauli-Pott U, Neidhard J, Heinzl-Gutenbrunner M, et al: On the link between attention deficit/hyperactivity disorder and obesity: do comorbid oppositional defiant and conduct disorder matter? *Eur Child Adolesc Psychiatry* 2014; 23:531-537
57. Phillips KL, Schieve LA, Visser S, et al: Prevalence and impact of unhealthy weight in a national sample of US adolescents with autism and other learning and behavioral disabilities. *Matern Child Health J* 2014; 18:1964-1975
58. Poulton A, Briody J, McCorquodale T, et al: Weight loss on stimulant medication: how does it affect body composition and bone metabolism?: a prospective longitudinal study. *Int J Pediatr Endocrinol* 2012; 2012:30
59. Poulton AS, Melzer E, Tait PR, et al: Growth and pubertal development of adolescent boys on stimulant medication for attention deficit hyperactivity disorder. *Med J Aust* 2013; 198:29-32
60. Semeijn EJ, Kooij JJ, Comijs HC, et al: Attention-deficit/hyperactivity disorder, physical health, and lifestyle in older adults. *J Am Geriatr Soc* 2013; 61:882-887
61. Tashakori A, Riahi K, Afkandeh R, et al: Comparison of height and weight of 5-6 year-old boys with attention deficit hyperactivity disorder (ADHD) and non-ADHD. *Iran J Psychiatry Behav Sci* 2011; 5:71-75
62. White B, Nicholls D, Christie D, et al: Childhood psychological function and obesity risk across the lifecourse: findings from the 1970 British Cohort Study. *Int J Obes* 2012; 36:511-516
63. Wilhelm C, Marx I, Konrad K, et al: Differential patterns of disordered eating in subjects with ADHD and overweight. *World J Biol Psychiatry* 2011; 12(suppl 1):118-123
64. Yang R, Mao S, Zhang S, et al: Prevalence of obesity and overweight among Chinese children with attention deficit hyperactivity disorder: a survey in Zhejiang Province, China. *BMC Psychiatry* 2013; 13:133
65. Simon GE, Von Korff M, Saunders K, et al: Association between obesity and psychiatric disorders in the US adult population. *Arch Gen Psychiatry* 2006; 63:824-830
66. Levy LD, Fleming JP, Klar D: Treatment of refractory obesity in severely obese adults following management of newly diagnosed attention deficit hyperactivity disorder. *Int J Obes* 2009; 33:326-334
67. Albayrak Ö, Pütter C, Volckmar AL, et al: Common obesity risk alleles in childhood attention-deficit/hyperactivity disorder. *Am J Med Genet B Neuropsychiatr Genet* 2013; 162B:295-305
68. Friedel S, Horro FF, Wernter AK, et al: Mutation screen of the brain derived neurotrophic factor gene (BDNF): identification of several genetic variants and association studies in patients with obesity, eating disorders, and attention-deficit/hyperactivity disorder. *Am J Med Genet B Neuropsychiatr Genet* 2005; 132B:96-99
69. Porriño LJ, Rapoport JL, Behar D, et al: A naturalistic assessment of the motor activity of hyperactive boys: I. Comparison with normal controls. *Arch Gen Psychiatry* 1983; 40:681-687
70. Qureshi IA, Mehler MF: Towards a 'systems'-level understanding of the nervous system and its disorders. *Trends Neurosci* 2013; 36: 674-684
71. Cortese S, Vincenzi B: Obesity and ADHD: clinical and neurobiological implications. *Curr Top Behav Neurosci* 2012; 9:199-218
72. Joseph N, Zhang-James Y, Perl A, et al: Oxidative stress and ADHD: a meta-analysis. *J Atten Disord* 2013 (Epub ahead of print, Nov 14, 2013)
73. Bloch MH, Qawasmi A: Omega-3 fatty acid supplementation for the treatment of children with attention-deficit/hyperactivity disorder symptomatology: systematic review and meta-analysis. *J Am Acad Child Adolesc Psychiatry* 2011; 50:991-1000
74. Luppino FS, de Wit LM, Bouvy PF, et al: Overweight, obesity, and depression: a systematic review and meta-analysis of longitudinal studies. *Arch Gen Psychiatry* 2010; 67:220-229
75. Gariépy G, Nitka D, Schmitz N: The association between obesity and anxiety disorders in the population: a systematic review and meta-analysis. *Int J Obes* 2010; 34:407-419