

Elevated CSF Corticotropin-Releasing Factor Concentrations in Posttraumatic Stress Disorder

J. Douglas Bremner, M.D., Julio Licinio, M.D., Adam Darnell, M.D.,
John H. Krystal, M.D., Michael J. Owens, Ph.D., Steven M. Southwick, M.D.,
Charles B. Nemeroff, M.D., and Dennis S. Charney, M.D.

Objective: Corticotropin-releasing factor (CRF) and somatostatin both play important roles in mediating responses to acute and chronic stress. The purpose of this study was to measure CSF concentrations of CRF and somatostatin in patients with chronic combat-related post-traumatic stress disorder (PTSD) and comparison subjects. **Method:** Lumbar punctures for collection of CSF were performed in Vietnam combat veterans with PTSD (N=11) and comparison subjects (N=17). CSF concentrations of CRF and somatostatin were compared between the two groups. **Results:** CSF concentrations of CRF were higher in the PTSD patients than in the comparison subjects (mean=29.0 pg/ml, SD=7.8, versus mean=21.9 pg/ml, SD=6.0). This group difference remained significant after covariance for age. CSF somatostatin concentrations in PTSD patients were higher than those of the comparison subjects (mean=19.9 pg/ml, SD=5.4, versus mean=13.7 pg/ml, SD=8.0). However, covarying for age reduced the level of significance. **Conclusions:** Higher CSF CRF concentrations in patients with PTSD may reflect alterations in stress-related neurotransmitter systems. The higher CSF CRF concentrations may play a role in disturbances of arousal in patients with PTSD. (Am J Psychiatry 1997; 154:624-629)

Corticotropin-releasing factor (CRF) plays an important role in mediating the mammalian stress response (1). CRF released during stress (2) from nerve terminals originating in the paraventricular nucleus of the hypothalamus increases the secretion of adrenocorticotropin hormone (ACTH) from the anterior pituitary, which in turn stimulates release of cortisol from the adrenal (3). Cortisol has a number of effects that are beneficial to short-term survival, including suppression of reproductive and immune function, promotion of

analgesia, activation of the peripheral autonomic system, suppression of gastric motility and gastric acid secretion, and increases in total oxygen consumption and glucose and glucagon concentrations in plasma (3). Chronic stress results in sustained increases in plasma glucocorticoid levels (4), with a potentiation of glucocorticoid responsiveness to subsequent stressors (5, 6) and neuronal "hypersecretion" of CRF.

CRF neurons are distributed in a variety of locations outside of the hypothalamus, including the amygdala, bed nucleus of the stria terminalis, central gray area, locus ceruleus, parabrachial area, and dorsal vagus complex (7). Intraventricular administration of CRF to laboratory animals results in behavioral activation, as evidenced by 1) an increase in EEG activity (8); 2) increases in plasma norepinephrine and epinephrine concentrations (9, 10); 3) an increase in firing of the locus ceruleus, site of the majority of noradrenergic cell bodies in the brain, which results in a state of increased attention and arousal (11); 4) increased locomotor activity, grooming, and rearing (12); and 5) behaviors consistent with anxiety and fear, including a decrease in exploratory activity in an open field (13), decreased punished responding in the conflict test (14), and potentiation of acoustic startle (15, 16). These studies support an important role for CRF in the promotion of anxiety and fear-related behaviors.

Received Feb. 26, 1996; revision received Nov. 12, 1996; accepted Dec. 19, 1996. From the Department of Psychiatry, Yale University School of Medicine, New Haven, Conn.; National Center for Posttraumatic Stress Disorder, West Haven, Conn; West Haven VA Medical Center, West Haven, Conn.; Yale Psychiatric Institute; and Department of Psychiatry and Behavioral Sciences, Emory University School of Medicine, Atlanta. Address reprint requests to Dr. Bremner, Yale Psychiatric Institute, P.O. Box 208038, Yale Station, New Haven, CT 06520.

Supported by a grant from the National Center for Posttraumatic Stress Disorder, a VA Career Development Award to Dr. Bremner, NIMH grant MH-42088 and grant MH-51761 to Drs. Nemeroff and Owens, and an Alma Foster Davis Investigator Award from the National Alliance for Research on Schizophrenia and Depression to Dr. Licinio.

Antiserums oC33 and 486 were provided by Dr. Wylie Vale, Salk Institute, La Jolla, Calif.

The authors thank Sandi Capelli, R.N., Valinda Ouelette, R.N., Angie Genovese, R.N., and Pat Barry, R.N., for assistance in conducting these studies.

Findings from clinical studies are consistent with a relationship among CRF, stress, and depression (which has been conceptualized as a chronic stress disorder). Studies in patients with depression consistently reveal an increase in CSF concentrations of CRF and a blunted ACTH response to intravenously administered CRF (17–19). Patients with posttraumatic stress disorder (PTSD) have been found to exhibit alterations in hypothalamic-pituitary-adrenal (HPA) axis function (20, 21), although no studies have directly measured CRF in the CSF in patients with PTSD. Somatostatin is a tetradecapeptide with widespread localization in the CNS that also appears to play a role in the stress response (22–24). Somatostatin and CRF levels tend to covary with one another, so it would be predicted that increased levels of CRF would be associated with increased levels of somatostatin. CSF somatostatin concentrations in patients with affective disorders, however, have been found to be either lower than (25–27) or the same as (28) those of comparison subjects (although elevated levels of somatostatin are seen in mania [29]). The purpose of the present study was to measure CSF CRF and somatostatin concentrations in Vietnam combat veterans with PTSD and matched comparison subjects. We hypothesized that PTSD would be associated with elevated CSF levels of CRF and somatostatin.

METHOD

Patients were Vietnam veterans with combat-related PTSD ($N=11$) who gave written informed consent for participation in the study and who were admitted to the inpatient unit of the National Center for Posttraumatic Stress Disorder over a 3-year period from 1992 to 1995. Patients were admitted to the unit on an elective basis and received appointment dates for their admission. Only patients who were clinically stable and were not in crisis were admitted to this specialized program. Patients with a history of combat exposure in Vietnam were included if they fulfilled criteria for PTSD on the basis of the Structured Clinical Interview for DSM-III-R (SCID) (30) and the diagnosis (based on DSM-III-R criteria) of a research psychiatrist. Patients were excluded if they had a history of current alcohol or substance abuse or dependence, or schizophrenia, as determined by the SCID; serious medical disorder, as determined by laboratory tests and physical examination; organic mental disorder; neurological disorder; or head trauma. All patients were free of medication, alcohol, and drugs for 4 weeks or more before the study, as determined by frequent (a minimum of twice-a-week), random tests with a device to determine the alcohol content of a breath sample and urine toxicology tests that were performed while the patients were on the inpatient unit.

Patients were evaluated with the SCID for comorbid psychiatric diagnoses. Nine (82%) of 11 patients fulfilled criteria for a lifetime history of major depression, and five (45%) for current major depression. Two patients (18%) fulfilled criteria for lifetime history of dysthymia, and two (18%) for current dysthymia. Two patients (18%) fulfilled criteria for lifetime history of bipolar disorder, and one (9%) for current bipolar disorder. One patient (9%) fulfilled criteria for lifetime history of hypomania, and none for current hypomania. Two (18%) of 11 patients fulfilled criteria for lifetime history of and current panic disorder with agoraphobia, three (27%) for lifetime history of panic disorder without agoraphobia, and two (18%) for current panic disorder without agoraphobia. Two (18%) of 11 fulfilled criteria for lifetime history of and current agoraphobia without panic disorder, five (45%) for lifetime history of social phobia, four (36%) for current social phobia, three (27%) for lifetime history of and current obsessive-compulsive disorder, two (18%) for lifetime history of

and current simple phobia, and two (18%) for lifetime history of and current generalized anxiety disorder. No patients fulfilled criteria for a lifetime history of or current schizophrenia, while one patient (9%) fulfilled criteria for a lifetime history of and current psychotic disorder not otherwise specified. No patients fulfilled criteria for a lifetime history of or current anorexia nervosa, bulimia, somatization disorder, somatic pain disorder, undifferentiated somatization disorder, or hypochondriasis.

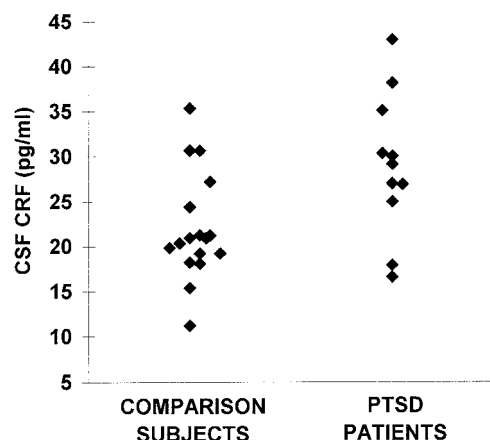
There was a high rate of comorbid lifetime diagnoses of alcohol and substance abuse disorders in the group of patients with PTSD. All patients fulfilled criteria for a lifetime history of alcohol dependence, four (36%) for sedative/hypnotic/anxiolytic dependence and none for abuse, five (45%) for cannabis dependence and none for cannabis abuse, four (36%) for stimulant dependence and none for abuse, two (18%) for opiate dependence and none for abuse, four (36%) for cocaine dependence and one (9%) for cocaine abuse, two (18%) for hallucinogen/phencyclidine dependence and none for abuse, and none for polydrug dependence or abuse.

Comparison subjects were recruited by newspaper advertisement from the local area. Comparison subjects included were physically healthy and did not have a history of a psychiatric disorder, as determined by a psychiatric interview that employed DSM-III-R criteria. They were between 18 and 65 years of age and provided written informed consent for participation. Comparison subjects were excluded if they had a history of current alcohol or substance abuse, as determined by psychiatric interview and urine toxicology; serious medical disorder, as determined by laboratory tests and physical examination; organic mental disorder; neurological disorder; a history of exposure to psychological trauma, as determined by an interview with a psychiatrist; or a history of head trauma. There was a trend toward patients with PTSD being older than the comparison subjects (mean=45.9 years, $SD=1.3$, versus mean=40.3, $SD=11.9$), although this did not reach statistical significance ($t=1.9$, $df=26$, $p<0.10$). Some of the comparison subjects were included in a previous study (31).

Several clinical assessments were administered to the PTSD patients in this study. These included the Mississippi Scale for Combat-Related Posttraumatic Stress Disorder, a self-report measure of current PTSD symptom severity (32), and the Combat Exposure Scale, a self-report instrument for the measurement of level of exposure to combat (33).

Subjects were fasting and had refrained from consumption of caffeine after midnight the night before the procedure. All PTSD patients had been inpatients for 4 or more weeks before the study and slept the previous night in the hospital where the procedure was performed. Comparison subjects either stayed the night before in the hospital ($N=4$) or arrived the morning of the procedure ($N=13$). There was no difference between those who stayed in the hospital and those who did not for both CRF measurements (24.5 pg/ml versus 21.2) and somatostatin measurements (16.9 pg/ml versus 12.8). CSF samples of CRF and somatostatin were obtained by lumbar puncture between 8:00 a.m. and 9:00 a.m. on the day of the study. We decided to have most of the comparison subjects arrive the day of the study because this approximated their normal routine. Lumbar punctures were performed under sterile conditions and with local anesthesia, with patients in the lateral decubitus position. There were no complications from the procedure in any subjects. CSF samples were frozen immediately and stored at -68°C , coded, and assayed by a member of the research team (M.J.O.) who was blind to diagnosis and subject identity.

CSF concentrations of CRF were measured in duplicate by modification of a previously described specific radioimmunoassay for CRF (19), by using an antiserum (oC33) raised in rabbits against ovine CRF. Briefly, duplicate 450- μl aliquots of CSF were lyophilized and reconstituted in 200 μl of assay buffer and incubated at 4°C for 18 hours with 100 μl of antiserum at a final dilution of 1:21,875 in assay buffer containing 1% normal rabbit serum. Radiolabeled [^{125}I]-Tyr 0 -rat/human CRF was added (20,000 counts/minute in 50- μl buffer) after 18 hours to each tube. After incubation for 24 hours at 4°C , 10 μl of goat-antirabbit serum was added to precipitate bound CRF. The standard curve containing 450 μl of artificial CSF and 0.625 pg/tube to 640 pg/tube was prepared by using rat/human CRF and was treated identically as the human CSF samples. The sensitivity of the assay was 1.25 pg/tube with 50% displacement of radiolabeled CRF

FIGURE 1. CSF CRF Levels in PTSD Patients (N=11) and Comparison Subjects (N=17)^a

^aCSF CRF levels were significantly higher in PTSD patients than in comparison subjects ($t=2.7$, $df=26$, $p<0.05$).

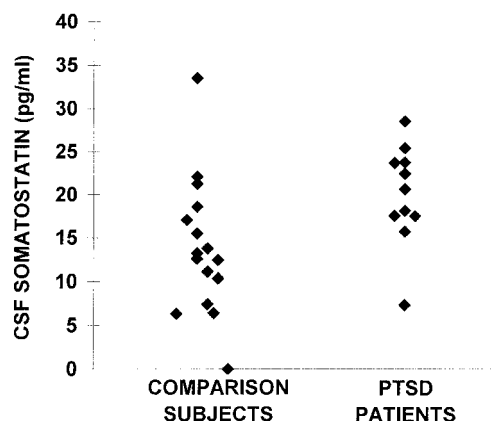
(IC_{50}) at 30 pg/tube. The inter- and intra-assay coefficients of variation have been measured every 6 months for the past 11 years with a set of identical samples (pooled human CSF) run in two separate assays. The difference between these values has ranged over this period of time between 10% and 13% for interassay and between 2% and 6% for intra-assay measurements.

CSF concentrations of somatostatin were measured in duplicate by modification of a previously described specific radioimmunoassay for somatostatin (34, 35), by using an antiserum (number 486) raised in sheep. Briefly, duplicate 250- μ l aliquots of CSF were lyophilized and reconstituted in 200 μ l of assay buffer and incubated at 4°C for 24 hours with 100 μ l of antiserum at a final dilution of 1:35,000 in assay buffer containing 1% normal sheep serum. Radiolabeled [^{125}I]-Tyr⁰-somatostatin was added (20,000 counts/minute in 50- μ l buffer) after 24 hours to each tube. After incubation for 24 hours at 4°C, 5 μ l of rabbit-antisheep serum was added to precipitate bound somatostatin. The standard curve containing 250 μ l of artificial CSF and 0.625 pg/tube to 640 pg/tube was prepared by using somatostatin₁₋₁₄ and was treated identically as the human CSF samples. The sensitivity of the assay was 0.625 pg/tube with 50% displacement of radiolabeled somatostatin (IC_{50}) at 32 pg/tube. The inter- and intra-assay coefficients of variation (which used the methodology described earlier for CRF samples) are 8%–11% and 2%–5%, respectively. All samples from all subjects (including all patients and comparison subjects) were run together in a single CRF or somatostatin assay through use of the same laboratory techniques.

Data were analyzed by using a nonpaired two-tailed t test. In order to control for differences in age between the patients and comparison subjects, an analysis of covariance (ANCOVA) was performed for both CRF and somatostatin.

RESULTS

CSF CRF concentrations were significantly higher in the PTSD patients than in the comparison subjects (mean=29.0 pg/ml, SD=7.8, versus mean=21.9 pg/ml, SD=6.0; $p<0.05$) (figure 1). The higher level of CSF CRF concentrations in PTSD patients was still significant after adjustment for differences in age between the two groups by using ANCOVA ($F=6.71$, $df=1$, 26, $p<0.05$). CSF somatostatin concentrations were also significantly

FIGURE 2. CSF Somatostatin Levels in PTSD Patients (N=11) and Comparison Subjects (N=16)^a

^aCSF somatostatin levels were significantly higher in patients with PTSD than in comparison subjects ($t=2.3$, $df=25$, $p<0.05$). This effect was less significant after control for differences in age with ANCOVA.

higher in PTSD patients than in comparison subjects (mean=19.9 pg/ml, SD=5.4, versus mean=13.7 pg/ml, SD=8.0; $p<0.05$) (figure 2). This difference was a statistical trend for a higher concentration in PTSD patients after adjustment for differences in age by using ANCOVA ($F=3.40$, $df=1$, 25, $p=0.08$).

There was a highly significant correlation between CSF CRF and somatostatin in the PTSD patients when considered alone ($p=0.006$). This was predicted on the basis of the hypothesis that increases in CRF would be associated with increases in somatostatin. There was no significant correlation between CSF CRF and somatostatin in the comparison subjects when considered alone (figure 3). We used multivariate analyses to examine the hypothesis of a significant relationship between CRF and somatostatin in the patients but not in the comparison subjects. When the relationship between CRF and somatostatin levels was examined through use of multiple linear regression, with CRF as the dependent variable and somatostatin and diagnosis as independent variables, there was a highly significant interaction between somatostatin and diagnosis relative to the dependent variable, CRF ($F=12.89$, $df=1$, 25, $p=0.002$).

There was no difference in CSF concentrations of CRF between PTSD patients with and without comorbid major depression (mean=30.9 pg/ml, SD=4.9, versus mean=27.5 pg/ml, SD=7.0). In addition, there was no difference in CSF concentrations of somatostatin between PTSD patients with and without comorbid major depression (mean=20.5 pg/ml, SD=4.0, versus mean=19.8 pg/ml, SD=4.9).

There was no correlation between CSF CRF or somatostatin and measures of PTSD symptoms (Mississippi scale score) or level of exposure to combat stress as measured by the Combat Exposure Scale within the PTSD patients alone. There was no correlation between

CSF CRF or somatostatin and age in either patients or comparison subjects.

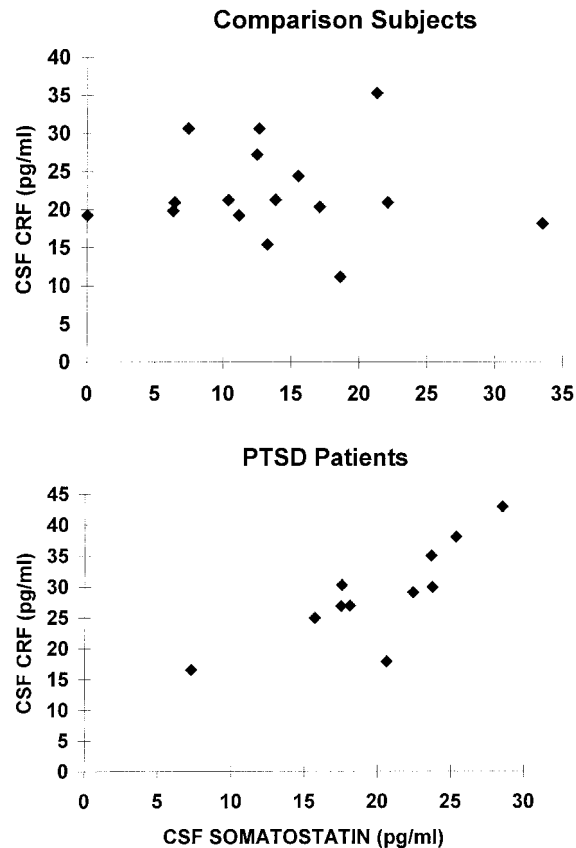
DISCUSSION

In this study CSF concentrations of CRF were higher in patients with PTSD than in comparison subjects. CSF concentrations of somatostatin were also elevated in PTSD patients. However, the intergroup difference in somatostatin levels was not as great as that for CRF, and the level of significance was reduced for somatostatin levels after control for differences in age between the two groups through use of ANCOVA. CSF CRF and somatostatin concentrations were highly correlated in the PTSD patients but not in the comparison subjects.

An increase in CSF CRF is consistent with the hypothesis of a hypersecretion of neuronal CRF in PTSD. On the basis of findings related to the sites of origin of CSF levels of CRF, this increase is probably derived from brain regions outside of the median eminence (36), such as hippocampus, cerebral cortex, amygdala, bed nucleus of the stria terminalis, and cortical areas (7). Several studies have found evidence for altered HPA/CRF axis function in PTSD (37–42), including a blunted ACTH response to CRF (37), which could be explained by a down-regulation of CRF receptors at the level of the anterior pituitary secondary to chronic increases in CRF. Consistent with this, preclinical studies showed a chronic increase in neuronal CRF release following exposure to stress (5). Preclinical studies showed that glucocorticoids are associated with damage to the hippocampus (43, 44), a brain region involved in memory that has been suggested to have an inhibitory effect on glucocorticoid release from the hypothalamus. Stress-induced damage was associated with an increase in levels of CRF mRNA in the paraventricular nuclei of the hypothalamus (45), as well as a decrease in the sensitivity of rats to dexamethasone suppression of HPA function (46, 47). Consistent with this, we found smaller right hippocampal volume in Vietnam combat veterans with PTSD than in matched comparison subjects (48). Alterations in hippocampal function may be associated with neuronal hypersecretion of CRF in PTSD.

We carefully considered the possible effects of comorbid diagnoses on our results. Patients with affective disorders have been found to have increased CSF CRF (18, 19) (but see reference 49). We did not find a difference in CSF CRF between PTSD patients with and without major depression in the current study. Hypercortisolemia and an increase in rates of nonsuppression with the standard dexamethasone suppression test have been associated with depression, while hypocortisolemia and a supersuppression with low doses of dexamethasone have been associated with PTSD. This suggests that these disorders have different neurobiological bases, especially with regard to the CRF/HPA axis. It is of interest that nonhuman primates with variable foraging

FIGURE 3. Relationship Between CSF Somatostatin and CSF CRF in PTSD Patients (N=11) and Comparison Subjects (N=16)^a



^aThere was a highly significant correlation between CSF somatostatin and CSF CRF within the PTSD patient group ($r=0.77$, $df=9$, $p=0.006$) but not within the comparison group.

mothers (a model for early-life stress) had elevated CSF CRF and decreased CSF cortisol levels in adulthood, a picture that is closer to PTSD than depression (50). Furthermore, no difference has been found in rates of supersuppression with low-dose dexamethasone between PTSD patients with and without comorbid major depression (41); this finding has been interpreted as the neurobiology of PTSD “overriding” the neurobiology of depression in those patients who have comorbid depression and PTSD. Patients with other psychiatric disorders, including mania (28), generalized anxiety disorder (28, 51, 52), panic disorder (28, 51, 52), somatization disorder (28), dementia without depression (28), and schizophrenia (19, 53), have not been found to have a difference in CRF in comparison to control subjects. No studies have specifically examined CSF CRF in substance abuse, and the one study in alcoholics (which did find increased concentrations of CSF CRF) was conducted in individuals who were undergoing alcohol withdrawal (54). This finding was not applicable to our current group, since none of the patients was in alcohol withdrawal. In summary, there is not evidence at this time to support the idea that findings related to

CRF/HPA axis function in patients with PTSD are related to comorbidity with other psychiatric disorders.

There are some limitations of our study that are worthy of mention. Although all of the PTSD patients were voluntarily admitted as psychiatric inpatients at the time of the procedure, not all of the comparison subjects stayed overnight the night before the test. There may be differences based on hospitalization status that could represent confounding factors in our study results. High levels of comorbidity with other psychiatric diagnoses in the PTSD patients may represent another confounding factor in the study results.

This study demonstrated higher CSF somatostatin concentrations in PTSD patients than in comparison subjects. As reviewed earlier, an increase in somatostatin release has been associated with exposure to stress. We found a correlation between somatostatin and CRF in the PTSD patients but not in the normal subjects. Somatostatin blocks CRF-induced anorexia (55) and inhibition of growth hormone secretion (56), a phenomenon observed during stress. CRF levels correlate positively with somatostatin levels (57), while increased levels of peripheral glucocorticoids are associated with low levels of somatostatin (57, 58). Patients with chronic PTSD may have two separate factors that lead to increased somatostatin, low levels of peripheral glucocorticoids, and elevated levels of CSF CRF. Elevated levels of peripheral glucocorticoids may explain why somatostatin levels have been found to be low in depression (25–27), a disorder associated with elevated CRF (although elevated levels of somatostatin are seen in mania [29]). Although a previous study found a significant correlation between CRF and somatostatin in healthy subjects (unlike in the current study), this correlation was modest ($r=0.37$) and much less than that in a population of patients with Cushing's disease who had altered CRF levels and a strong correlation between CRF and somatostatin ($r=0.64$) (57).

REFERENCES

- Delbende C, Delarue C, Lefebvre H, Bunel DT, Szafarczyk A, Mocaer E, Kamoun A, Jegou S, Vaudry H: Glucocorticoids, transmitters and stress. *Br J Psychiatry* 1992; 160:24–34
- Chappell PB, Smith MA, Kilts CD, Bissette G, Ritchie J, Nemeroff CB: Alterations in corticotropin-releasing factor-like immunoreactivity in discrete rat brain regions after acute and chronic stress. *J Neurosci* 1986; 6:2908–2914
- Owens MJ, Nemeroff CB: Physiology and pharmacology of corticotropin-releasing factor. *Pharmacol Rev* 1991; 425–473
- Ottewiller JE, Natelson BH, Pitman DL, Drastal SD: Adrenocortical and behavioral responses to repeated stressors: toward an animal model of chronic stress and stress-related mental illness. *Biol Psychiatry* 1989; 26:829–841
- Dallman MF, Jones MT: Corticosteroid feedback control of ACTH secretion: effect of stress-induced corticosterone secretion on subsequent stress responses in the rat. *Endocrinology* 1973; 92:1367–1375
- Caggiula AR, Antelman SM, Aul E, Knopf S, Edwards DJ: Prior stress attenuates the analgesic response but sensitizes the corticosterone and cortical dopamine responses to stress 10 days later. *Psychopharmacology (Berl)* 1989; 99:233–237
- Owens MJ, Nemeroff CB: The neurobiology of CRF: implications for the affective disorders, in *The Hypothalamic-Pituitary-Adrenal Axis: Physiology, Pathophysiology, and Psychiatric Implications*. Edited by Schatzberg AF, Nemeroff CB. New York, Raven Press, 1988, pp 1–36
- Ehlers CL, Henriksen SS, Wang M, Rivier J, Vale W, Bloom FE: CRF production in the brain: excitation and cortical seizures in the rat. *Brain Res* 1983; 278:332–336
- Brown MR, Fisher LA: Central nervous system effects of corticotropin releasing factor on the dog. *Brain Res* 1983; 280:75–79
- Brown MR, Fisher LA, Rivier J, Spiess S, Rivier C, Vale W: Corticotropin-releasing factor: effects on the sympathetic nervous system and oxygen consumption. *Life Sci* 1982; 30:207–210
- Valentino RJ, Foote SL, Aston-Jones G: Corticotropin-releasing factor activates noradrenergic neurons of the locus coeruleus. *Brain Res* 1983; 270:363–367
- Sutton RE, Koob GF, Le Moal M, Rivier J, Vale W: Corticotropin releasing factor produces behavioral activation in rats. *Nature* 1982; 297:331–333
- Britton DR, Koob G, Vale W: Intraventricular corticotropin-releasing factor enhances behavioral effects of novelty. *Life Sci* 1982; 31:363–367
- Britton KT, Koob GF: Behavioral effects of CRF, in *The Hypothalamic-Pituitary-Adrenal Axis: Physiology, Pathophysiology, and Psychiatric Implications*. Edited by Schatzberg AF, Nemeroff CB. New York, Raven Press, 1988, pp 55–66
- Swerdlow NR, Britton KT, Koob GF: Potentiation of acoustic startle by corticotropin releasing factor and fear are both reversed by alpha-helical CRF (9-41). *Neuropsychopharmacology* 1989; 2:285–292
- Heinrichs SC, Pich EM, Miczek KA, Britton KT, Koob GF: Corticotropin-releasing factor antagonist reduces emotionality in socially defeated rats via direct neurotropic action. *Brain Res* 1992; 581:190–197
- Owens MJ, Nemeroff CB: The role of corticotropin-releasing factor in the pathophysiology of affective and anxiety disorders: laboratory and clinical studies. *Ciba Found Symp* 1993; 172: 296–316
- Nemeroff CB, Widerlov E, Bissette G, Walleus H, Karlsson I, Eklund K, Kilts CD, Loosen PT, Vale W: Elevated concentrations of CSF corticotropin-releasing factor-like immunoreactivity in depressed patients. *Science* 1984; 226:1342–1343
- Banki CM, Bissette G, Arato M, O'Connor L, Nemeroff CB: CSF corticotropin-releasing factor-like immunoreactivity in depression and schizophrenia. *Am J Psychiatry* 1987; 144:873–877
- Bremner JD, Davis M, Southwick SM, Krystal JH, Charney DS: The neurobiology of posttraumatic stress disorder, in *American Psychiatric Press Review of Psychiatry*, vol 12. Edited by Oldham JM, Riba MB, Tasman A. Washington, DC, American Psychiatric Press, 1993, pp 182–204
- Charney DS, Deutch AY, Krystal JH, Southwick SM, Davis M: Psychobiologic mechanisms of posttraumatic stress disorder. *Arch Gen Psychiatry* 1993; 50:294–299
- Benyassi A, Roussel JP, Rougeot C, Gavalda A, Astier H, Arancibia S: Chronic stress affects in vivo hypothalamic somatostatin release but not in vitro GH responsiveness to somatostatin in rats. *Neurosci Lett* 1993; 159:166–170
- Deutch AY, Bean AJ, Bissette G, Nemeroff CB, Robbins RJ, Roth RH: Stress-induced alterations in neurotensin, somatostatin and corticotropin-releasing factor in mesotelencephalic dopamine system regions. *Brain Res* 1987; 417:350–354
- Wallace JL, Boichot E, Sidoti C, Brex A, Paubert-Braquet M: Protective effects of somatostatin against gastric damage induced by hemorrhagic shock, stress, and PAF in the rat. *Regul Pept* 1993; 47:195–203
- Agren H, Lundquist G: Low levels of somatostatin in human CSF marks depressive episodes. *Psychoneuroendocrinology* 1984; 9: 233–248
- Rubinow DR, Gold PW, Post RM, Ballenger JC, Cowdry RW: Somatostatin in patients with affective illness and in normal volunteers, in *Neurobiology of Mood Disorders*. Edited by Post RM, Ballenger JC. Baltimore, Williams & Wilkins, 1984, pp 369–387
- Doran AR, Rubinow DR, Roy A, Pickar D: CSF somatostatin and abnormal response to dexamethasone administration in

- schizophrenic and depressed patients. *Arch Gen Psychiatry* 1986; 43:365-369
28. Banki CM, Karmacs L, Bissette G, Nemeroff CB: Cerebrospinal fluid neuropeptides in mood disorders and dementia. *J Affect Disord* 1992; 25:39-46
 29. Sharma RP, Bissette G, Janicak PG, Davis JM, Nemeroff CB: Elevation of CSF somatostatin concentrations in mania. *Am J Psychiatry* 1995; 152:1807-1809
 30. Spitzer RL, Williams JBW, Gibbon M: Structured Clinical Interview for DSM-III-R (SCID). New York, New York State Psychiatric Institute, Biometrics Research, 1987
 31. Licinio J, Seibyl JP, Altemus M, Charney DS, Krystal JH: Elevated CSF levels of interleukin-2 in neuroleptic-free schizophrenic patients. *Am J Psychiatry* 1993; 150:1408-1410
 32. Keane TM, Caddell JM, Taylor KL: Mississippi Scale for Combat-Related Posttraumatic Stress Disorder: three studies in reliability and validity. *J Consult Clin Psychol* 1988; 56:85-90
 33. Keane TM, Fairbank JA, Caddell JM: Clinical evaluation of a scale to measure combat exposure. *Psychol Assess* 1989; 1:53-55
 34. Cook LL, Bissette G, Dole K, Nemeroff CB: A critical evaluation of cysteamine as a tool to deplete somatostatin in the rat central nervous system. *Endocrinology* 1989; 124:855-860
 35. Bissette G, Widerlov E, Walleus H, Karlsson I, Eklund K, Forsman A, Nemeroff CB: Alterations in cerebrospinal fluid concentrations of somatostatinlike immunoreactivity in neuropsychiatric disorders. *Arch Gen Psychiatry* 1986; 43:1148-1151
 36. Post RM, Gold P, Rubinow DR, Ballenger JC, Bunney WE, Goodwin FK: Peptides in cerebrospinal fluid of neuropsychiatric patients: an approach to central nervous system peptide function. *Life Sci* 1982; 31:1-15
 37. Smith MA, Davidson J, Ritchie JC, Kudler H, Lipper S, Chappell P, Nemeroff CB: The corticotropin-releasing hormone test in patients with posttraumatic stress disorder. *Biol Psychiatry* 1989; 26:349-355
 38. Mason JW, Giller EL, Kosten TR, Ostroff RB, Podd L: Urinary free cortisol levels in post-traumatic stress disorder patients. *J Nerv Ment Dis* 1986; 174:145-149
 39. Pitman R, Orr S: Twenty-four hour urinary cortisol and catecholamine excretion in combat-related posttraumatic stress disorder. *Biol Psychiatry* 1990; 27:245-247
 40. Kudler H, Davidson J, Meador K, Lipper S, Ely T: The DST and posttraumatic stress disorder. *Am J Psychiatry* 1987; 144:1068-1071
 41. Yehuda R, Southwick SM, Krystal JH, Bremner JD, Charney DS, Mason JW: Enhanced suppression of cortisol with low dose dexamethasone in posttraumatic stress disorder. *Am J Psychiatry* 1993; 150:83-86
 42. Yehuda R, Lowy MT, Southwick SM, Shaffer D, Giller EL Jr: Lymphocyte glucocorticoid receptor number in posttraumatic stress disorder. *Am J Psychiatry* 1991; 148:499-504
 43. McEwen BS, Gould EA, Sakai RR: The vulnerability of the hippocampus to protective and destructive effects of glucocorticoids in relation to stress. *Br J Psychiatry* 1992; 160:18-24
 44. Sapolsky RM, McEwen BS: Why dexamethasone resistance? two possible neuroendocrine mechanisms, in *The Hypothalamic-Pituitary-Adrenal Axis: Physiology, Pathophysiology, and Psychiatric Implications*. Edited by Schatzberg AF, Nemeroff CB. New York, Raven Press, 1988, pp 155-169
 45. Herman JP, Schafer MK, Young EA, Thompson R, Douglass J, Akil H, Watson SJ: Evidence for hippocampal regulation of neuroendocrine neurons of hypothalamo-pituitary-adrenocortical axis. *J Neurosci* 1989; 9:3072-3082
 46. Feldman S, Conforti N: Participation of the dorsal hippocampus in the glucocorticoid feedback effect on adrenocortical activity. *Neuroendocrinology* 1980; 30:52-55
 47. Magarinos A, Somoza G, DeNicola A: Glucocorticoid negative feedback and glucocorticoid receptors after hippocampectomy in rats. *Horm Metab Res* 1987; 19:105-109
 48. Bremner JD, Randall PR, Scott TM, Bronen RA, Seibyl JP, Southwick SM, Delaney RC, McCarthy G, Charney DS, Innis RB: MRI-based measurement of hippocampal volume in patients with combat-related posttraumatic stress disorder. *Am J Psychiatry* 1995; 152:973-981
 49. Geraciotti TD Jr, Orth DN, Ekhaton NN, Blumenkopf B, Loosen PT: Serial cerebrospinal fluid corticotropin-releasing hormone concentrations in healthy and depressed humans. *J Clin Endocrinol Metab* 1992; 74:1325-1330
 50. Coplan JD, Andrews MW, Rosenblum LA, Owens MJ, Friedman S, Gorman JM, Nemeroff CB: Persistent elevations of cerebrospinal fluid concentrations of corticotropin-releasing factor in adult nonhuman primates exposed to early-life stressors: implications for the pathophysiology of mood and anxiety disorders. *Proc Natl Acad Sci USA* 1996; 93:1619-1623
 51. Fossey MD, Lydiard RB, Ballenger JC, Laraia MT, Bissette G, Nemeroff CB: Cerebrospinal fluid corticotropin-releasing factor concentrations in patients with anxiety disorders and normal comparison subjects. *Biol Psychiatry* 1996; 39:703-707
 52. Jolkonen J, Lepola U, Bissette G, Nemeroff CB, Riekkinen P: CSF corticotropin-releasing factor is not affected in panic disorder. *Biol Psychiatry* 1993; 33:136-138
 53. Plotsky PM, Owens MJ, Nemeroff CB: Neuropeptide alterations in mood disorders, in *Psychopharmacology: The Fourth Generation of Progress*. Edited by Bloom FE, Kupfer DJ. New York, Raven Press, 1995, pp 971-981
 54. Hawley RJ, Nemeroff CB, Bissette G, Guidotti A, Rawlings R, Linnoila M: Neurochemical correlates of sympathetic activation during severe alcohol withdrawal. *Alcohol Clin Exp Res* 1994; 18:1312-1316
 55. Shibasaki T, Yamauchi N, Kato Y, Masuda A, Imaki T, Hotta M, Demura H, Oono H, Ling N, Shizume K: Involvement of corticotropin-releasing factor in restraint stress-induced anorexia and reversion of the anorexia by somatostatin in the rat. *Life Sci* 1988; 43:1103-1110
 56. Rivier C, Vale W: Involvement of corticotropin-releasing factor and somatostatin in stress-induced inhibition of growth hormone secretion in the rat. *Endocrinology* 1985; 117:2478-2482
 57. Kling MA, Rubinow DR, Doran AR, Roy A, Davis CL, Calabrese JR, Nieman LK, Post RM, Chrousos GP, Gold PW: Cerebrospinal fluid immunoreactive somatostatin concentrations in patients with Cushing's disease and major depression: relationship to indices of corticotropin-releasing hormone and cortisol secretion. *Neuroendocrinology* 1993; 57:79-88
 58. Doran AR, Rubinow DR, Roy A, Pickar D: CSF somatostatin and abnormal response to dexamethasone administration in schizophrenia and depressed patients. *Arch Gen Psychiatry* 1986; 43:365-369