

# GWAS Meta-Analysis of Suicide Attempt: Identification of 12 Genome-Wide Significant Loci and Implication of Genetic Risks for Specific Health Factors

Anna R. Docherty, Ph.D., Niamh Mullins, Ph.D., Allison E. Ashley-Koch, Ph.D., Xuejun Qin, Ph.D., Jonathan R.I. Coleman, Ph.D., Andrey Shabalin, Ph.D., JooEun Kang, Ph.D., Balasz Murnyak, Ph.D., Frank Wendt, Ph.D., Mark Adams, Ph.D., Adrian I. Campos, Ph.D., Emily DiBlasi, Ph.D., Janice M. Fullerton, Ph.D., Henry R. Kranzler, M.D., Amanda V. Bakian, Ph.D., Eric T. Monson, M.D., Ph.D., Miguel E. Rentería, Ph.D., Consuelo Walss-Bass, Ph.D., Ole A. Andreassen, M.D., Ph.D., Chittaranjan Behera, M.D., Cynthia M. Bulik, Ph.D., Howard J. Edenberg, Ph.D., Ronald C. Kessler, Ph.D., J. John Mann, M.D., John I. Nurnberger, Jr., M.D., Ph.D., Giorgio Pistis, Ph.D., Fabian Streit, Ph.D., Robert J. Ursano, M.D., Renato Polimanti, Ph.D., Michelle Dennis, B.S., Melanie Garrett, M.S., Lauren Hair, M.S., Philip Harvey, Ph.D., Elizabeth R. Hauser, Ph.D., Michael A. Hauser, Ph.D., Jennifer Huffman, Ph.D., Daniel Jacobson, Ph.D., Ravi Madduri, M.S., Benjamin McMahon, Ph.D., David W. Oslin, M.D., Jodie Trafton, Ph.D., Swapnil Awasthi, M.Sc., Wade H. Berrettini, M.D., Ph.D., Martin Bohus, M.D., Xiao Chang, Ph.D., Hsi-Chung Chen, M.D., Ph.D., Wei J. Chen, M.D., Ph.D., Erik D. Christensen, M.D., Scott Crow, M.D., Philibert Duriez, M.D., Alexis C. Edwards, Ph.D., Fernando Fernández-Aranda, Ph.D., Hanga Galfalvy, Ph.D., Michael Gandal, Ph.D., Philip Gorwood, M.D., Ph.D., Yiran Guo, Ph.D., Jonathan D. Hafferty, M.B.Ch.B., Hakon Hakonarson, M.D., Ph.D., Katherine A. Halmi, M.D., Akitoyo Hishimoto, M.D., Ph.D., Sonia Jain, Ph.D., Stéphane Jamain, Ph.D., Susana Jiménez-Murcia, Ph.D., Craig Johnson, Ph.D., Allan S. Kaplan, M.D., F.R.C.P.(C), Walter H. Kaye, M.D., Pamela K. Keel, Ph.D., James L. Kennedy, M.D., F.R.C.P.(C), Minsoo Kim, B.S., Kelly L. Klump, Ph.D., Daniel F. Levey, Ph.D., Dong Li, Ph.D., Shih-Cheng Liao, Ph.D., Klaus Lieb, M.D., Lisa Lilienfeld, Ph.D., Christian R. Marshall, Ph.D., James E. Mitchell, M.D., Satoshi Okazaki, M.D., Ph.D., Ikuo Otsuka, M.D., Ph.D., Dalila Pinto, Ph.D., Abigail Powers, Ph.D., Nicolas Ramoz, Ph.D., Stephan Ripke, M.D., Ph.D., Stefan Roepke, M.D., Vsevolod Rozanov, M.D., Ph.D., Stephen W. Scherer, Ph.D., F.R.S.C., Christian Schmahl, M.D., Marcus Sokolowski, Ph.D., Anna Starnawska, Ph.D., Michael Strober, Ph.D., Mei-Hsin Su, Ph.D., Laura M. Thornton, Ph.D., Janet Treasure, Ph.D., F.R.C.P., Erin B. Ware, Ph.D., M.P.H., Hunna J. Watson, Ph.D., Stephanie H. Witt, Ph.D., D. Blake Woodside, M.D., Zeynep Yilmaz, Ph.D., Lea Zillich, M.Sc., Rolf Adolfsson, Ph.D., Ingrid Agartz, M.D., Ph.D., Martin Alda, M.D., Lars Alfredsson, Ph.D., Vivek Appadurai, Ph.D., María Soler Artigas, Ph.D., Sandra Van der Auwera, Ph.D., M. Helena Azevedo, Ph.D., Nicholas Bass, M.R.C.Psych., Claiton H.D. Bau, Ph.D., Bernhard T. Baune, Ph.D., Frank Bellivier, Ph.D., Klaus Berger, M.D., Joanna M. Biernacka, Ph.D., Tim B. Bigdeli, Ph.D., Elisabeth B. Binder, M.D., Ph.D., Michael Boehnke, Ph.D., Marco P. Boks, Ph.D., David L. Braff, M.D., Richard Bryant, Ph.D., Monika Budde, Dipl.-Psych., Enda M. Byrne, Ph.D., Wiepke Cahn, Ph.D., Enrique Castelao, M.Sc., Jorge A. Cervilla, M.D., Ph.D., Boris Chaumette, M.D., Ph.D., Aiden Corvin, Ph.D., Nicholas Craddock, Ph.D., Srdjan Djurovic, Ph.D., Jerome C. Foo, Ph.D., Andreas J. Forstner, M.D., Mark Frye, M.D., Justine M. Gatt, Ph.D., Ina Giegling, Ph.D., Hans J. Grabe, M.D., Melissa J. Green, Ph.D., Eugenio H. Grevet, Ph.D., Maria Grigoriou-Serbanescu, Ph.D., Blanca Gutierrez, Ph.D., Jose Guzman-Parra, Ph.D., Marian L. Hamshire, Ph.D., Annette M. Hartmann, Ph.D., Joanna Hauser, Ph.D., Stefanie Heilmann-Heimbach, Ph.D., Per Hoffmann, Ph.D., Marcus Ising, Ph.D., Ian Jones, Ph.D., Lisa A. Jones, Ph.D., Lina Jonsson, Ph.D., René S. Kahn, M.D., Ph.D., John R. Kelsoe, M.D., Kenneth S. Kendler, M.D., Stefan Kloiber, M.D., Karestan C. Koenen, Ph.D., Manolis Kogevinas, Ph.D., Marie-Odile Krebs, M.D., Ph.D., Mikael Landén, M.D., Ph.D., Marion Leboyer, Ph.D., Phil H. Lee, Ph.D., Douglas F. Levinson, M.D., Calwing Liao, Ph.D., Jolanta Lissowska, Ph.D., Fermin Mayoral, Ph.D., Susan L. McElroy, M.D., Patrick McGrath, M.D., Peter McGuffin, Ph.D., Andrew McQuillin, Ph.D., Divya Mehta, Ph.D., Ingrid Melle, M.D., Ph.D., Philip B. Mitchell, M.D., Esther Molina, Ph.D., Gunnar Morken, Ph.D., Caroline Nievergelt, Ph.D., Markus M. Nöthen, M.D., Michael C. O'Donovan, F.R.C.Psych., Ph.D., Roel A. Ophoff, Ph.D., Michael J. Owen, F.R.C.Psych., Ph.D., Carlos Pato, M.D., Ph.D., Michele T. Pato, M.D., Brenda W.J.H. Penninx, Ph.D., James B. Potash, M.D., Robert A. Power, Ph.D., Martin Preisig, M.D., Digby Quested, M.D., Josep Antoni Ramos-Quiroga, M.D., Ph.D., Andreas Reif, M.D., Marta Ribasés, Ph.D., Vanesa Richarte, M.D., Ph.D., Marcella Rietschel, M.D., Margarita Rivera, Ph.D., Andrea Roberts, M.P.H., Ph.D., Gloria Roberts, Ph.D., Guy A. Rouleau, Ph.D., Diego L. Rovaris, Ph.D., Alan R. Sanders, M.D., Peter R. Schofield, Ph.D., D.Sc., Thomas G. Schulze, M.D., Laura J. Scott, Ph.D., Alessandro Serretti, M.D., Jianxin Shi, Ph.D.,

See related feature: **Editorial** by Dr. Binder (p. 705)

Lea Sirignano, M.Sc., Pamela Sklar, Ph.D., Olav B. Smeland, M.D., Ph.D., Jordan W. Smoller, M.D., Sc.D., Edmund J.S. Sonuga-Barke, Ph.D., Maciej Trzaskowski, Ph.D., Ming T. Tsuang, Ph.D., Gustavo Turecki, Ph.D., Laura Vilar-Ribó, B.Sc., John B. Vincent, Ph.D., Henry Völzke, M.D., James T.R. Walters, Ph.D., Cynthia Shannon Weickert, Ph.D., Thomas W. Weickert, Ph.D., Myrna M. Weissman, Ph.D., Leanne M. Williams, Ph.D., Naomi R. Wray, Ph.D., Clement C. Zai, Ph.D., Esben Agerbo, Dr.Med.Sc., Anders D. Børghlum, Ph.D., Gerome Breen, Ph.D., Ditte Demontis, Ph.D., Annette Erlangsen, Ph.D., Joel Gelernter, M.D., Stephen J. Glatt, Ph.D., David M. Hougaard, M.D., Hai-Gwo Hwu, M.D., Po-Hsiu Kuo, Ph.D., Cathryn M. Lewis, Ph.D., Qingqin S. Li, Ph.D., Chih-Min Liu, M.D., Nicholas G. Martin, Ph.D., Andrew M. McIntosh, M.D., Sarah E. Medland, Ph.D., Ole Mors, Ph.D., Merete Nordentoft, M.D., Catherine M. Olsen, Ph.D., David Porteous, Ph.D., Daniel J. Smith, M.D., F.R.C.Psych., Eli A. Stahl, Ph.D., Murray B. Stein, M.D., M.P.H., Danuta Wasserman, M.D., Ph.D., Thomas Werge, Ph.D., David C. Whiteman, M.B.B.S., Ph.D., Virginia Willour, Ph.D., VA Million Veteran Program (MVP), MVP Suicide Exemplar Workgroup, Suicide Working Group of the Psychiatric Genomics Consortium, Major Depressive Disorder Working Group of the Psychiatric Genomics Consortium, Bipolar Disorder Working Group of the Psychiatric Genomics Consortium, Schizophrenia Working Group of the Psychiatric Genomics Consortium, Eating Disorder Working Group of the Psychiatric Genomics Consortium, German Borderline Genomics Consortium, Hilary Coon, Ph.D., Jean C. Beckham, Ph.D., Nathan A. Kimbrel, Ph.D., Douglas M. Ruderfer, Ph.D.

**Objective:** Suicidal behavior is heritable and is a major cause of death worldwide. Two large-scale genome-wide association studies (GWASs) recently discovered and cross-validated genome-wide significant (GWS) loci for suicide attempt (SA). The present study leveraged the genetic cohorts from both studies to conduct the largest GWAS meta-analysis of SA to date. Multi-ancestry and admixture-specific meta-analyses were conducted within groups of significant African, East Asian, and European ancestry admixtures.

**Methods:** This study comprised 22 cohorts, including 43,871 SA cases and 915,025 ancestry-matched controls. Analytical methods across multi-ancestry and individual ancestry admixtures included inverse variance-weighted fixed-effects meta-analyses, followed by gene, gene-set, tissue-set, and drug-target enrichment, as well as summary-data-based Mendelian randomization with brain expression quantitative trait loci data, phenome-wide genetic correlation, and genetic causal proportion analyses.

**Results:** Multi-ancestry and European ancestry admixture GWAS meta-analyses identified 12 risk loci at  $p$  values

$<5 \times 10^{-8}$ . These loci were mostly intergenic and implicated *DRD2*, *SLC6A9*, *FURIN*, *NLGN1*, *SOX5*, *PDE4B*, and *CACNG2*. The multi-ancestry SNP-based heritability estimate of SA was 5.7% on the liability scale ( $SE=0.003$ ,  $p=5.7 \times 10^{-80}$ ). Significant brain tissue gene expression and drug set enrichment were observed. There was shared genetic variation of SA with attention deficit hyperactivity disorder, smoking, and risk tolerance after conditioning SA on both major depressive disorder and posttraumatic stress disorder. Genetic causal proportion analyses implicated shared genetic risk for specific health factors.

**Conclusions:** This multi-ancestry analysis of suicide attempt identified several loci contributing to risk and establishes significant shared genetic covariation with clinical phenotypes. These findings provide insight into genetic factors associated with suicide attempt across ancestry admixture populations, in veteran and civilian populations, and in attempt versus death.

*Am J Psychiatry* 2023; 180:723–738; doi: 10.1176/appi.ajp.21121266

Suicide accounted for more than 700,000 deaths worldwide in 2019 and was the fourth leading cause of death among 15- to 29-year-olds (1). Suicide attempt is even more common (2–4). Suicide attempt is strongly associated with psychiatric conditions, poor quality of life, traumatic experiences, and social and economic burden (1) and is the single strongest predictor of future suicide death (5).

Heritability estimates for suicidal thoughts and behaviors from twin and family studies range from 30% to 55% (6), and recent large-scale genome-wide association studies (GWASs) have yielded promising and replicable results. The International Suicide Genetics Consortium (ISGC) (total  $N=549,743$ ; 29,782 cases) identified two loci reaching genome-wide significance for suicide attempt in individuals of primarily European ancestry admixtures, on chromosomes 6 (index SNP: rs71557378;  $p=1.97 \times 10^{-8}$ ) and 7 (index

SNP: rs62474683;  $p=1.91 \times 10^{-10}$ ) (7). The intergenic locus on chromosome 7 remained significant after conditioning on psychiatric disorders and was independently replicated ( $p=3.27 \times 10^{-3}$ ) (8) in the Million Veteran Program (MVP) cohort (9). The MVP cohort GWAS of suicide attempt (total  $N=409,153$ ; 14,089 cases) resulted in two genome-wide significant multi-ancestry loci, on chromosomes 20 (index SNP: rs56817213;  $p=3.64 \times 10^{-9}$ ) and 1 (index SNP: rs72730526;  $p=3.69 \times 10^{-8}$ ) (8). A top signal identified at the dopamine receptor  $D_2$  locus ( $p=1.77 \times 10^{-7}$ ) also showed moderate association in the ISGC GWAS ( $p=7.97 \times 10^{-4}$ ) (7).

These studies established the complexity of the common variant genetic architecture of suicide attempt and demonstrated the critical role of sample size for discovering novel, replicable risk loci for suicide phenotypes through GWASs (10). Together, these GWASs suggested that larger

studies will identify additional genomic risk loci and refine genetic risk metrics.

The objective of the present study was to conduct a meta-analysis of the ISGC and MVP studies (total N=958,896; 43,871 suicide attempt and suicide death cases). Moreover, there is considerable need to increase the diversity and generalizability of GWAS data (11). Combining all ISGC and MVP cohorts allowed for the largest GWAS meta-analyses of European, African, and East Asian ancestry admixtures to date. We also tested for gene set enrichment and functional follow-up specific to all included ancestral admixture populations.

## METHODS

### GWAS Cohorts and Phenotype Ascertainment

*The International Suicide Genetics Consortium (ISGC) cohort.* The ISGC analyses included 29,782 cases of suicide attempt (SA; defined as self-injurious behaviors with an intent to die) and/or suicide death and 519,961 control subjects from 18 cohorts (15 of SAs, two of suicide deaths, and one of both), 12 of which were ascertained clinically for the purpose of studying psychiatric disorders. Details about the specific cohorts have been provided previously (7), and cohort references and ascertainment methods are summarized in Table S1 in the online supplement. Twelve SA cohorts ascertained information on SA via in-person structured psychiatric interviews conducted by trained clinicians/researchers, two SA cohorts used self-report, and two SA cohorts used ICD codes or hospital records. All interviews and self-report items asked explicitly about SA rather than self-harm (which would also include nonsuicidal self-injury). ICD codes were coupled with information from emergency department settings and information on reason for contact and attempt methods that were mined from physician notes, in order to maximize evidence that suicidal intent was present. For the cohorts in which interviews or self-report were used to ascertain SA information, the SA was nonfatal. In an additional two cohorts, cases of suicide death were explicitly ascertained. The majority of suicide death cases were ascertained from the Utah Office of the Medical Examiner (hereafter “Utah”; N=4,692). In these cases, suicide cause-of-death determination results from a detailed investigation of the scene of the death and circumstances of death, determination of medical conditions by full autopsy, review of medical and other public records concerning the case, interviews with survivors, and standard toxicology workups (12). Suicide determination is traditionally conservative given its impact on surviving relatives. In the 746 suicide deaths from Kobe, Japan, autopsies were performed and cause of death was determined through discussion with the Medical Examiner’s Office and the Division of Legal Medicine at the Kobe University Graduate School of Medicine. The Columbia University cohort of both SA and suicide death included 317 suicide deaths that were determined by psychological autopsy and the coroner or medical examiner. A psychological autopsy is a method of

determining the psychological factors that may have contributed to a death, considering additional information from family members, friends, acquaintances, medical records, and other relevant documents to better characterize a death of uncertain cause, including suspected suicides.

*The Million Veteran Program cohort.* MVP recruitment and study procedures have been described previously (8). Participants provided a blood sample, consented to genetic analyses and the linking of their genetic information to the VA’s electronic health record system (EHR), and completed two optional surveys (9, 13). SA was defined as an act of deliberate self-harm with the intent to cause death that occurred at any point over the lifetime. Briefly, cases were defined as veterans with a documented history of SA in the EHR (N=14,089) and controls were defined as veterans with no documented history of suicidal thoughts or behaviors in the EHR (N=395,064). VA EHR sources were utilized to create an SA phenotype using 1) diagnostic codes for intentional self-harm, 2) suicidal behavior reports from the VA’s Suicide Prevention Applications Network database, and 3) mental health survey responses from the VA’s Mental Health Assistant database indicating a history of attempting suicide. Veterans who had a history of suicidal ideation but no SA were excluded from analysis. For all ISGC and MVP cohorts, it remains undetermined which individuals with SA may have died later by suicide. Details of sample sizes by genetic ancestry admixture for the ISGC and MVP cohorts are presented in Table 1.

### Genotyping, Quality Control, and Imputation

Details of genotyping, quality control (QC), and imputation for the ISGC and MVP data sets have been described previously (7, 8). In the ISGC analyses, genotyping was performed locally by each of the research teams, using comparable procedures (8) (details per cohort are available in Table S1 in the online supplement). Standard parameters were used to retain individuals and SNPs after quality control for missingness, relatedness, and Hardy-Weinberg equilibrium. Genetic ancestry was defined by the contributing cohorts, and all ascertainment, QC, and analysis details of the ISGC and MVP cohorts are provided in Table S1 in the online supplement. Imputation was performed using the largest available ancestrally matched reference panels, either from the 1000 Genomes Project or the Haplotype Reference Consortium. We confirmed the comparability of imputation across the cohorts by comparing the final set of SNPs in the meta-analysis, including the number of cohorts in which they were present, and the INFO scores across cohorts and within ancestral admixture groups. Sample overlap and/or cryptic relatedness across cohorts was assessed and corrected for using the meta-analytic tools described below. Eight of the cohorts had high control: case ratios (using an arbitrary cutoff of >15:1). In these cases, the linkage disequilibrium (LD) score regression (LDSC) (14) attenuation ratio statistics were examined for evidence of population stratification or uncontrolled type

**TABLE 1. Summary of GWAS cohorts and primary ancestry admixtures<sup>a</sup>**

| Cohort                                  | Suicide Attempt/Death | Ascertainment   | Cases  | Controls |
|---|-----------------------|-----------------|--------|----------|
| <b>EUR</b>                              |                       |                 |        |          |
| Army STARRS                             | Attempt               | Military        | 670    | 10,637   |
| Australian Genetics of Depression Study | Attempt               | Psychiatric     | 2,792  | 20,193   |
| Columbia University                     | Attempt and death     | Psychiatric     | 577    | 1,233    |
| GISS                                    | Attempt               | Psychiatric     | 660    | 660      |
| German Borderline Genomics Consortium   | Attempt               | Psychiatric     | 481    | 1,653    |
| iPSYCH                                  | Attempt               | Population      | 7,003  | 52,227   |
| Janssen                                 | Attempt               | Psychiatric     | 255    | 1,684    |
| Million Veteran Program                 | Attempt               | Military        | 9,196  | 287,370  |
| PGC Bipolar Disorder                    | Attempt               | Psychiatric     | 3,214  | 17,642   |
| PGC Eating Disorders                    | Attempt               | Psychiatric     | 170    | 5,070    |
| PGC Major Depressive Disorder           | Attempt               | Psychiatric     | 1,528  | 16,626   |
| PGC Schizophrenia                       | Attempt               | Psychiatric     | 1,640  | 7,112    |
| UK Biobank                              | Attempt               | Population      | 2,433  | 334,766  |
| University of Utah                      | Death                 | Population      | 4,692  | 20,702   |
| Yale-Penn                               | Attempt               | Psychiatric     | 475    | 1,817    |
| Total                                   |                       |                 | 35,786 | 779,392  |
| <b>EAS</b>                              |                       |                 |        |          |
| CONVERGE Consortium                     | Attempt               | Psychiatric     | 1,148  | 6,515    |
| Kobe University                         | Death                 | Population      | 746    | 14,049   |
| Million Veteran Program                 | Attempt               | Military        | 115    | 4,082    |
| Total                                   |                       |                 | 2,009  | 24,646   |
| <b>AFR</b>                              |                       |                 |        |          |
| Grady Trauma Project                    | Attempt               | General medical | 669    | 4,473    |
| Million Veteran Program                 | Attempt               | Military        | 3,507  | 74,306   |
| Yale-Penn                               | Attempt               | Psychiatric     | 629    | 2,902    |
| Total                                   |                       |                 | 4,805  | 81,681   |
| <b>LAT</b>                              |                       |                 |        |          |
| Million Veteran Program                 | Attempt               | Military        | 1,271  | 29,306   |
| Multi-ancestry total                    |                       |                 | 43,871 | 915,025  |

<sup>a</sup> AFR=African; CONVERGE=China, Oxford, and VCU Experimental Research on Genetic Epidemiology; EAS=East Asian; EUR=European; GISS=Genetic Investigation of Suicide Attempt and Suicide; iPSYCH=Lundbeck Foundation Initiative for Integrative Psychiatric Research; LAT=Hispanic/Latino; PGC=Psychiatric Genomics Consortium; SA=suicide attempt; STARRS=Study to Assess Risk and Resilience in Servicemembers.

I error in the cohort. For any evidence of inflation, the intercept was used to adjust the standard error of the summary statistics.

### GWAS Meta-Analysis of Suicide Attempt

For both the ISGC and MVP cohorts, the initial GWAS analysis was conducted within genetic ancestral admixtures. For the ISGC meta-analysis, GWASs were conducted within study and genetic ancestral admixtures, covarying for at least 10 principal components of genetic ancestry, genomic relatedness matrices, or factors capturing site of recruitment or genotyping batch, as required (7). For the MVP cohort, ancestry was assigned for four mutually exclusive ancestral groupings utilizing a previously defined approach harmonizing genetic ancestry admixtures and self-identified ancestry groupings (HARE) (15). Subsequent MVP GWAS analyses were performed within ancestral admixtures using PLINK2 (16), covarying for genetic ancestry principal components, age, and sex.

A multi-ancestry meta-analysis of SA GWAS summary statistics was conducted using an inverse variance-weighted fixed-effects model (standard error) in METAL (17),

assuming shared risk effects across ancestry admixtures. SNPs with a mean weighted minor allele frequency of <1%, a mean weighted imputation INFO score <0.6, or SNPs present in <80% of the total effective sample size were removed to ensure adequate statistical power at every variant included. Ancestry admixture-specific GWAS meta-analyses were conducted with cohorts of significant European (EUR), African (AFR), and East Asian (EAS) ancestry admixtures using the same procedures. Only one primary ancestral admixture population, Hispanic/Latino (LAT), was limited to a single cohort and thus could not be meta-analyzed. Inflation of test statistics due to polygenicity or cryptic relatedness was assessed using the LDSC attenuation ratio ( $[\text{LDSC intercept} - 1] / [\text{mean of association chi-square statistics} - 1]$ ). Resulting genome-wide significant (GWS) loci were defined as those with  $p < 5 \times 10^{-8}$  with  $\text{LD } r^2 > 0.1$ , within a 3,000-kb window, based on the structure of the Haplotype Reference Consortium (HRC) EUR reference panel for the multi-ancestry meta-analysis, or the HRC ancestry-appropriate reference panel otherwise. GWS loci for SA were examined for heterogeneity across cohorts via the  $I^2$  inconsistency metric and forest plots.

## Estimation of Heritability and Genetic Association With Other Disorders

LDSC (14) and covariate-adjusted LDSC (cov-LDSC) (18) methods were used to estimate the phenotypic variance in SA explained by common SNPs (SNP-based heritability,  $h^2_{\text{SNP}}$ ) from the GWAS meta-analysis summary statistics. LD scores from the 1000 Genomes Project (EUR and EAS) were used to derive  $h^2_{\text{SNP}}$  for the multi-ancestry GWAS meta-analysis and meta-analyses of European and East Asian ancestry admixtures. To obtain acceptable attenuation ratios for Hispanic/Latino and African ancestry admixture  $h^2_{\text{SNP}}$  estimates, we used covariate-adjusted AMR LD scores (AMR referring to the “Ad Mixed American” super population code) from Pan UK Biobank (<https://pan.ukbb.broadinstitute.org>) and AA LD scores (AA referring to a U.S. population of African ancestry admixtures) from gnomAD v2.1.1 (19).  $h^2_{\text{SNP}}$  was calculated on the liability scale assuming a lifetime prevalence of 2% for SA in the general population (the middle of the range reported worldwide) (20). The default script of LDSC was used to exclude SNPs with minor allele frequency (MAF) <1% and INFO <0.9 and also to restrict variants to the list of approximately 1.2 million HAPMAP SNPs that are typically well imputed across data sets.  $h^2$  estimates remained stable across >2% and >5% MAF thresholds. The genetic correlation attributable to genome-wide SNPs ( $r_G$ ) was estimated between the ancestral admixture groups using the *Popcorn* package (21), and with a range of psychiatric disorders using LDSC and the largest available discovery GWAS meta-analysis summary statistics (22–33). The latter analyses were confined to European ancestry admixtures for consistency with the discovery summary data. Tests were Bonferroni corrected, adjusting for up to 18 phenotypes hypothesized to be associated with SA based on previous epidemiological association or previous evidence of genetic association in LD Hub (34). Previous LD Hub analyses in ISGC were pre-categorized manually into risk factor groups relevant to SA (5, 35, 36): autoimmune disease, neurologic disease, heart disease, hypertension, diabetes, kidney disease, cancer, alcohol use, smoking, pain, psychiatric, sleep, life stressors, socioeconomic, and education/cognition. Values for  $r_G$  of SA in ISGC and MVP in this study were calculated using LDSC, and references for the discovery GWAS are listed in Table S2 in the online supplement. Differences in  $r_G$  across other phenotypes using EUR GWAS meta-analyses were tested as a deviation from 0, using the block jackknife method implemented in LDSC (37). To examine phenome-wide partial genetic causality, the Complex-Traits Genetics Virtual Lab (CTG-VL) (38) was used to conduct false discovery rate-corrected genetic causal proportion (GCP) analyses on the EUR summary data.

## Conditioning Suicide Attempt on Major Depressive Disorder and PTSD

The results of the EUR GWAS SA meta-analysis were conditioned on genetic risks for major depressive disorder

(MDD) (27) and posttraumatic stress disorder (PTSD) (32) in secondary analyses, to examine genetic associations both shared with and unique to suicide risk. Results were conditioned because MDD and PTSD are both highly comorbid with SA, and because PTSD is particularly prevalent in military veteran populations (i.e., MVP). Conditioning was conducted using multitrait-based conditional and joint analysis using GWAS summary data (mtCOJO) (39), implemented in the GCTA software program (40). mtCOJO estimates the effect size of a SNP on an outcome trait (e.g., SA) conditioned on one or more exposure traits (e.g., MDD). GWS SNPs for the exposure are used as instruments to estimate the effect of the exposure on the outcome, and this effect is used to perform genome-wide conditioning, yielding conditioned effect sizes and p values for the outcome trait. The EUR-only SA GWAS summary statistics were used as the outcome trait, because mtCOJO requires GWAS summary statistics for the exposure trait, which were derived from EUR ancestry discovery GWAS. To select independent SNPs as instruments, we selected those that were more than 1 megabase apart or had an LD  $r^2$  <0.05 based on the 1000 Genomes Project Phase 3 EUR reference panel (41). mtCOJO is robust to sample overlap between the GWASs of the exposure and outcome. In this analysis, statistical power to detect genetic associations at individual SNPs was reduced relative to the unconditioned analysis by the additional model parameters, but the genetic correlations using the conditioned summary statistics provide valuable insights into the relevant risk factors for SA over and above those related to MDD and PTSD.

## Gene, Gene Pathway, and Tissue Enrichment Analyses

Enrichment analyses of the GWAS results were performed to probe genes, biological pathways, and tissues implicated in SA, using the multi-ancestry and ancestry admixture-specific GWAS results. The p values quantifying the degree of association of genes and gene sets with SA were calculated using MAGMA v1.08 (42), implemented in FUMA v1.3.7 (43). Input SNPs were mapped to 18,627 protein-coding genes. Genome-wide significance was defined as a p value <  $2.68 \times 10^{-6}$  (0.05/18,627). Curated gene sets that included at least 10 genes from MSigDB v7.0 were tested for association with SA. Competitive gene-set tests were conducted to correct for gene size, variant density, and LD within and between genes. Tissue-set enrichment analyses were also performed using MAGMA implemented in FUMA, to test for enrichment of association signal in genes expressed in 54 tissue types from GTEx v8 (44) (Bonferroni-corrected p threshold,  $9.26 \times 10^{-4}$ ).

## Drug Target Enrichment Analyses

Additional gene-set enrichment analyses of both the multi-ancestry and EUR GWAS meta-analysis results were performed, restricted to genes targeted by drugs, in order to investigate putative relationships of suicide attempt with specific drug types. These analyses do not identify causal

relationships but may implicate genes relevant to pharmacotherapy. This approach has been described previously (45). Gene-level and gene-set analyses were performed in MAGMA v1.08. Gene boundaries were defined using build 37 reference data from the National Center for Biotechnology Information, available on the MAGMA website (<https://ctg.cncr.nl/software/magma>), extended 35 kb upstream and 10 kb downstream to increase the likelihood of including regulatory regions outside of the transcribed region. Gene-level association statistics were defined as the aggregate of the mean and the lowest variant-level *p* value within the gene boundary, converted to a *Z* value. Gene sets were defined comprising the targets of each drug in the Drug-Gene Interaction Database (DGIdb) v.2 (46) and in the Psychoactive Drug Screening Ki Database (47), both downloaded in June 2016 (45). Analyses were performed using competitive gene-set analyses in MAGMA.

Results from the drug-set analysis were then grouped according to the Anatomical Therapeutic Chemical (ATC) class of the drug (45). Only drug classes containing at least 10 valid drug gene sets within them were analyzed, and drug-class analysis was performed using enrichment curves. All drug gene sets were ranked by their association in the drug-set analysis, and then for a given drug class, an enrichment curve was drawn scoring a “hit” if the drug gene set was within the class, or a “miss” if it was outside of the class. The area under the curve was calculated, and a *p* value for this was calculated as the Wilcoxon Mann-Whitney test comparing drug gene sets within the class to drug gene sets outside the class (45). Bonferroni-corrected significance thresholds of  $p < 5.79 \times 10^{-5}$  and  $p < 4.35 \times 10^{-4}$  were used for the drug-set and drug-class analyses, respectively, accounting for 863 drug sets and 115 drug classes.

### Summary Data-Based Mendelian Randomization

Summary data-based Mendelian randomization (SMR) (v1.03) (48, 49) was applied to detect GWAS signals that colocalize with expression quantitative trait loci (eQTLs), in order to investigate putative causal relationships between SNPs and SA via gene expression. SMR was performed using eQTL summary statistics from the MetaBrain consortium (50), a cortex-derived eQTL data set consisting of 2,970 EUR cortex samples. The analysis was conducted using the EUR-only GWAS meta-analysis results, for consistency with the eQTL data. Brain eQTL data from comparable sample sizes in other ancestral groups are not currently available. SMR analysis was limited to transcripts with at least one significant *cis*-eQTL ( $p < 5 \times 10^{-8}$ ) in the data set (of 8,753 in MetaBrain). The Bonferroni-corrected significance threshold for the SMR analysis was  $p < 5.71 \times 10^{-6}$ , and the significance threshold for the HEIDI test (heterogeneity in dependent instruments) (51) was  $p \geq 0.01$ . A nonsignificant HEIDI test suggests a direct causal role of the SA-associated SNPs on gene expression, rather than a pleiotropic effect.

### Polygenic Risk Scoring

Polygenic risk scores (PRSs) for SA were tested for association with SA compared with controls in six target cohorts: Psychiatric Genomics Consortium Major Depressive Disorder, Bipolar Disorder, and Schizophrenia (all European ancestry admixtures); CONVERGE (East Asian ancestry admixtures); and Yale-Penn and Grady Trauma Project cohorts (both primarily African ancestry admixtures, located in the United States). The SA GWAS meta-analysis was repeated, excluding each cohort in turn, to create independent discovery data sets. PRSs were generated using PRS-CS (51), which uses a Bayesian regression framework to place continuous shrinkage priors on the effect sizes of SNPs in the PRSs, adaptive to the strength of their association signal in the discovery GWAS and the LD structure from an external reference panel. The 1000 Genomes EUR, EAS, or AFR reference panels (41) were used to estimate LD between SNPs, as appropriate for each target cohort. PLINK v1.9 (16) was used to weight SNPs by their effect sizes, calculated using PRS-CS, and to sum all SNPs into PRSs for each individual in the target cohorts. PRSs were tested for association with case-versus-control status in the target cohort using a logistic regression model including covariates as per the GWAS. The amount of phenotypic variance explained by the PRS ( $R^2$ ) was calculated on the liability scale, assuming a lifetime prevalence of 2% for SA in the general population (20). The Bonferroni-corrected significance threshold, adjusting for six tests, was  $p < 0.008$ .

## RESULTS

### Significant Shared Genetic Architecture of SA Between Civilian (ISGC) and Military (MVP) Populations

The multi-ancestry GWAS included 43,871 cases and 915,025 controls from 22 cohorts (Table 1). Cases were of predominantly European ancestry admixtures (EUR, 81%), with 11% of cases with significant African ancestry admixtures located in the United States (AFR), 5% with East Asian ancestry admixtures (EAS), and 3% with Hispanic/Latino ancestry admixtures located in the United States (LAT). Case definition was lifetime SA, with ~13% of all cases having died by suicide. Additional information on study characteristics and ascertainment methods is presented in Table S1 in the online supplement.

Cohorts across ISGC and MVP differed with respect to ascertainment, with ISGC being largely civilian and MVP being military (Table S1A). However, examination of the genetic correlation of EUR GWAS meta-analyses for ISGC and MVP ( $r_G = 0.81$ ,  $SE = 0.091$ ,  $p = 2.85 \times 10^{-19}$ ) indicated consistency of common-variant genetic architecture across these meta-analyses. Results from both fixed and meta-regression models were comparable in the multi-ancestry and EUR GWAS meta-analyses (all GWS effect size correlations  $> 0.99$ ), indicating that ancestry and cohort ascertainment were unlikely to confound observed genetic effects (Table S1B).



## 12 GWS Loci Identified by GWAS Meta-Analysis of SA Across and Within Ancestries

The multi-ancestry GWAS meta-analysis identified eight GWS loci ( $p < 5 \times 10^{-8}$ ) (Figure 1). The  $h^2_{\text{SNP}}$  of SA was significant at 5.7% ( $\text{SE} = 0.003$ ,  $p = 5.70 \times 10^{-80}$ ) on the liability scale assuming an SA population prevalence of 2%. The cov-LDSC intercept was 1.04 ( $\text{SE} = 0.01$ ,  $p = 1.59 \times 10^{-5}$ ), and the attenuation ratio was 0.13 ( $\text{SE} = 0.03$ ), indicating that the majority of inflation of GWAS test statistics is likely due to polygenicity (see Figure S1 in the online supplement).

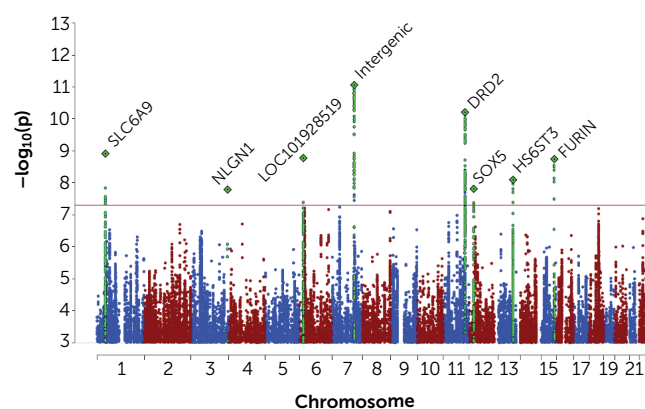
The locus most strongly associated with SA was in an intergenic region on chromosome 7 (index SNP rs62474683 A allele, odds ratio = 1.05, 95% CI = 1.04–1.07,  $p = 8.72 \times 10^{-12}$ ; frequency in cases, 0.57; frequency in controls, 0.56; a forest plot is provided in Figure S2 in the online supplement). At other GWS loci, index SNPs were intronic in the *SLC6A9*, *DRD2*, *HS6ST3*, and *FURIN* genes (Table 2; see Table S1B in the online supplement for additional summary data on all GWS loci). On chromosome 3, a GWS SNP localized to the 5' untranslated region of the *NLGN1* gene, although the index SNP lacked neighboring SNPs in LD. There was no evidence of heterogeneity of effects across cohorts for any GWS locus according to  $I^2$  heterogeneity indices (see Table S1B in the online supplement). Forest plots for GWS loci are provided in Figures S2–S9 in the online supplement.

The EUR GWAS meta-analysis  $h^2_{\text{SNP}}$  was estimated at 7.0% ( $\text{SE} = 0.4\%$ ) and identified four additional GWS loci (Table 2; see also Figure S10 and forest plots in Figures S11–14 in the online supplement), composed of mostly intergenic index SNPs. The nearest genes were *PDE4B*, *OTX2-AS1*, *CACNG2*, and one locus was in the major histocompatibility complex. GWAS meta-analyses in AFR ( $h^2_{\text{SNP}} = 9.8\%$ ,  $\text{SE} = 1.8\%$ ) and EAS ( $h^2_{\text{SNP}} = 9.8\%$ ,  $\text{SE} = 4.5\%$ ) produced no GWS loci. The LAT SA  $h^2_{\text{SNP}}$  (from the MVP GWAS) was estimated at 10.0% ( $\text{SE} = 6.5\%$ ). Regional plots of the 12 GWS risk loci across all meta-analyses are presented in Figures S15–S26 in the online supplement. Mapped genes from the top loci in multi-ancestry and ancestry admixture-specific meta-analyses are presented in Tables S3–S6 in the online supplement. Summary statistics from these GWASs are available through the Psychiatric Genomics Consortium data access portal.

## Genetic Correlations of SA Across Ancestry GWASs

The genetic correlations of SA across each of the ancestral groupings were attenuated, with estimated  $r_G$  values between 0.064 ( $\text{SE} = 0.574$ ) (EAS with LAT) and 0.997 ( $\text{SE} = 0.537$ ) (EUR with LAT); Popcorn  $r_G$  results are provided in Table S7 in the online supplement. Individual cohort GWASs were variably powered to estimate genetic correlation estimates with the other cohorts. LDSC estimates across all individual GWASs are presented in Table S8 in the online supplement, although cov-LDSC  $h^2_{\text{SNP}}$  and Popcorn  $r_G$  values in Table S7 in the online supplement are the preferred sources for statistics involving ancestry admixtures.

**FIGURE 1. Manhattan plot of multi-ancestry GWAS meta-analysis of suicide attempt<sup>a</sup>**



<sup>a</sup> The x-axis shows genomic position and the y-axis shows statistical significance as  $-\log_{10}(p)$ . The horizontal line shows the genome-wide significance threshold ( $p < 5.0 \times 10^{-8}$ ). Labels represent the nearest gene to the index SNP. Regional plots of the eight genome-wide significant loci across ancestry admixture populations and the four genome-wide significant loci in subjects of European ancestry admixtures are presented in Figures S3–S14 in the online supplement.

## Enrichment of SA GWS Loci for Brain-Expressed Genes and Overlap With Previous Genetic Associations to Known Risk Factors

Significant signal enrichment was observed in genes expressed in pituitary gland and brain tissues, based on the multi-ancestry GWASs (see Table S9 in the online supplement). Significant gene expression in brain was also observed in the EUR analysis (see Table S10 in the online supplement). Tissue-set enrichment analyses and corresponding GTEx gene expression heat maps for all of the multi- and ancestry admixture-specific GWASs are provided in Tables S9–S12 and Figures S31–S34 in the online supplement.

Several GWS genes were identified in MAGMA analyses of the multi-ancestry and EUR meta-analyses (see Table S13 in the online supplement; enrichment of SA signal with genes and gene sets across all meta-analyses are presented in Tables S13–S14 in the online supplement). MAGMA gene-based tests of the GWAS meta-analyses, with GWS results, are presented in Manhattan plots and QQ plots in Figures S27–S30 in the online supplement. EAS and AFR p-value thresholds for inclusion of GWAS variants in follow-up analysis were relaxed to  $p < 1 \times 10^{-5}$  and  $1 \times 10^{-6}$ , respectively, in order to explore gene-based tests of top ancestry-specific GWAS variants. Top genes implicated in the EAS analysis included *C11orf87*, *MYO1C*, and *FAXC*, and top genes implicated in the AFR analysis included *CNTNAP2*, *IGF2R*, *MAN1B1*, and *SLC22A1*. Neither set of genes was significantly associated with any pathway or tissue enrichment.

Gene-set analyses from the multi-ancestry and EUR GWAS identified 519 significant gene sets (31 and 488, respectively), spanning multiple domains, including epigenetics, gene regulation and transcription, cellular response to stress, DNA repair, and immunologic signatures (see Table

**TABLE 2. Results from meta-analyses of suicide attempt showing the index SNP from each genome-wide significant locus<sup>a</sup>**

| CHR            | Index SNP  | BP        | Locus Start..Stop        | Nearest Gene<br>(distance to index SNP in kb) | p        |
|----------------|------------|-----------|--------------------------|---|----------|
| Multi-ancestry |            |           |                          |   |          |
| 1              | rs3791129  | 44480093  | 44,462,155..44,497,134   | SLC6A9 (0.0)                                  | 1.22E−09 |
| 3              | rs7649709  | 173129819 | 173,113,742..174,012,162 | NLGN1 (0.0)                                   | 2.32E−08 |
| 6              | rs62404522 | 19307114  | 19,068,774..19,180,711   | LOC101928519 (−76.4)                          | 1.68E−09 |
| 7              | rs62474683 | 115020725 | 114,763,653..114,871,409 | LINC01392 (−149.3)                            | 8.72E−12 |
| 11             | rs7131627  | 113299829 | 113,280,327..113,346,120 | DRD2 (0.0)                                    | 6.2E−11  |
| 12             | rs17485141 | 24213634  | 23,682,438..24,715,425   | SOX5 (0.0)                                    | 1.54E−08 |
| 13             | rs9525171  | 96908223  | 96,742,361..97,491,816   | HS6ST3 (0.0)                                  | 8.07E−09 |
| 15             | rs17514846 | 91416550  | 91,411,818..91,426,687   | FURIN (0.0)                                   | 1.81E−09 |
| EUR            |            |           |                          |   |          |
| 1              | rs2503185  | 66461401  | 66,258,193..66,840,262   | PDE4B (0.0)                                   | 3.42E−08 |
| 6              | rs35869525 | 26946687  | 29,640,168..30,152,231   | (MHC)   | 2.18E−08 |
| 14             | rs850261   | 57346423  | 57,278,724..57,398,026   | OTX2-AS1 (0.0)                                | 1.37E−08 |
| 22             | rs2284000  | 37053338  | 36,956,904..37,099,797   | CACNG2 (0.0)                                  | 1.98E−08 |

<sup>a</sup> A1=tested allele; A2=other allele; BP=GRCh37 base pair position; CHR=chromosome; EUR=European; kb=kilobases; MHC=major histocompatibility complex; NCohorts=number of cohorts included; NEff=total effective sample size; NTotal=total cases and controls; SNP=single-nucleotide polymorphism.

S14 in the online supplement). The 31 multi-ancestry gene sets included schizophrenia and autism, containing protein-coding genes such as *FURIN*, *FES*, and *DRD2*, mapped from GWS loci. Most of the 488 EUR gene sets were due to overlap with a small group of 35 histone-coding genes.

Significant proportions of overlapping genes in GWAS Catalog (52) gene sets were observed for both multi-ancestry and EUR meta-analyses (see Figures S35–S36 in the online supplement). The 12 GWS loci from the multi-ancestry and EUR GWAS meta-analyses were tagged in several GWASs including cognition, smoking, insomnia, and risky behavior. Six of the 12 risk loci had *p* values <0.005 for the “Suicide or Other Intentional Self-Harm” analysis in FinnGen. A comprehensive list of results of SNP associations from the GWAS Catalog is presented in Table S15 in the online supplement. Examination of the phenome-wide association study results (*p*<0.005) across UK Biobank, FinnGen, and the GWAS Catalog resulted in the identification of several psychiatric, weight/BMI-related, and immune-related traits (see Table S16 in the online supplement).

Two loci implicated specific genes, *FES* and *TIAFI*, that were significantly associated with SA in SMR analyses and passed the HEIDI test. SMR results suggested that SA risk may be mediated by an increased expression of *FES* (previously implicated in cross-ancestry schizophrenia [53]) and decreased expression of *TIAFI* in cortex (see Table S17 in the online supplement).

### Significant Overlap of SA GWS Loci and Targets of Antipsychotics and Antidepressants

Drug target enrichment results suggested that SA risk is most associated with the targets of antipsychotic and antidepressant drug classes. In the multi-ancestry gene-set analysis of the targets of drug classes defined by their ATC classes (45), there was significant enrichment in the targets of four drug classes: *Antipsychotics* and *Psychoanaleptics*, which includes individually significant *Antidepressants* and its

subclass *Other Antidepressants* (see Table S18 in the online supplement). The class *Other Antidepressants* includes those not classified as selective serotonin reuptake inhibitors, monoamine oxidase inhibitors, or monoamine reuptake inhibitors.

In the EUR ancestry admixture GWAS analysis, there was significant enrichment in the targets of just three drug classes, including *Antipsychotics*, the broad class of *Psycholeptics* (drugs with a calming effect on behavior), and the class *Cytotoxic Antibiotics and Related Substances* (see Table S19 in the online supplement). Only one drug, the insecticide cyfluthrin, was significantly enriched when grouping genes targeted by individual drugs (from DGIdb v.2 and the Psychoactive Drug Screening Ki Database), and this was observed only in the EUR GWAS results (see Tables S20 and S21 in the online supplement for multi-ancestry and EUR results).

### Significant Genetic Correlation of SA With Known Nonpsychiatric Risk Factors Minimally Affected After Conditioning on MDD and PTSD

The out-of-sample polygenic risk analyses based on the new ISGC + MVP discovery GWAS meta-analysis statistics resulted in higher *R*<sup>2</sup> estimates than were observed in previous ISGC analyses, particularly for the AFR cohorts, where the maximum variance explained (*R*<sup>2</sup>) was 0.66% (*p*=0.01), with a maximum increase of 146%, and EAS cohorts, where *R*<sup>2</sup> was 0.34% (*p*=8.1×10<sup>−6</sup>), with a 36% increase. EUR maximum variance explained was 1.11% (*p*=6.2×10<sup>−22</sup>), a 24% increase from previous ISGC analyses (see Table S22 in the online supplement). Figure 2 presents a forest plot of the genetic correlations of the EUR GWAS meta-analyses of suicide attempt with several physical and mental health phenotypes, as well as one control phenotype (BMI). Significant shared genetic covariation of EUR SA with smoking (*r*<sub>G</sub>=0.46, SE=0.03, *p*=8.06×10<sup>−63</sup>), attention deficit hyperactivity disorder



| Odds Ratio | SE    | A1 | A2 | Direction         | NCohorts | NTotal  | NEff    |
|------------|-------|----|----|-------------------|----------|---------|---------|
| 1.055      | 0.009 | G  | A  | ++++++--++?++?++? | 18       | 933,136 | 158,078 |
| 1.054      | 0.010 | A  | C  | ++++++--++?++?++? | 21       | 954,890 | 164,921 |
| 1.067      | 0.011 | C  | T  | ++++++--++?++?++? | 22       | 956,659 | 166,924 |
| 1.054      | 0.008 | A  | G  | ++++++--++?++?++? | 22       | 958,896 | 167,455 |
| 1.053      | 0.008 | G  | A  | ++++++--++?++?++? | 21       | 944,101 | 164,620 |
| 1.049      | 0.009 | C  | T  | ++++++--++?++?++? | 22       | 958,896 | 167,455 |
| 1.044      | 0.008 | C  | G  | ++++++--++?++?++? | 22       | 958,896 | 167,455 |
| 1.048      | 0.008 | C  | A  | ++++++--++?++?++? | 20       | 938,959 | 162,145 |
| 1.047      | 0.008 | A  | G  | ++++++--++?++?++? | 15       | 815,178 | 136,860 |
| 1.089      | 0.015 | C  | T  | ++++++--++?++?++? | 14       | 803,626 | 134,461 |
| 1.049      | 0.008 | A  | G  | ++++++--++?++?++? | 15       | 815,178 | 136,860 |
| 1.055      | 0.010 | C  | G  | ++++++--++?++?++? | 14       | 812,886 | 135,108 |

(ADHD) ( $r_G=0.55$ ,  $SE=0.04$ ,  $p=2.98\times 10^{-41}$ ), risk tolerance ( $r_G=0.32$ ,  $SE=0.02$ ,  $p=1.34\times 10^{-59}$ ), and chronic pain ( $r_G=0.45$ ,  $SE=0.03$ ,  $p=9.50\times 10^{-50}$ ) were observed both before and after conditioning on genetic risks for MDD and PTSD. Significant positive genetic correlations of neuroticism, schizophrenia, bipolar disorder, and self-harm ideation with SA ( $r_G=0.45$ ,  $SE=0.03$ ,  $p=1.0\times 10^{-52}$ ;  $r_G=0.43$ ,  $SE=0.03$ ,  $p=1.32\times 10^{-55}$ ;  $r_G=0.48$ ,  $SE=0.04$ ,  $p=1.81\times 10^{-37}$ ;  $r_G=0.83$ ,  $SE=0.06$ ,  $p=1.94\times 10^{-51}$ ) did not remain significant after conditioning on both MDD and PTSD.

For completeness of comparison across cohorts and phenotypic subgroups (SA versus suicide death), genetic correlation estimates for phenotypes are presented in Table S23 in the online supplement using the European ancestry admixture GWAS summary statistics from 1) ISGC + MVP, 2) ISGC only, 3) MVP only, 4) ISGC without suicide death, 5) ISGC suicide death only (the Utah Suicide Study; current  $N=4,692$  EUR suicide deaths and 20,702 controls), and 6) conditioning on MDD and PTSD for MVP, ISGC, and MVP + ISGC. LDSC jackknife tests of differences between these genetic correlation estimates are presented in Table S24 in the online supplement, and more exhaustive comparisons of phenome-wide  $r_G$  and genetic causal proportion analyses, with the European admixture GWAS meta-analysis, are provided in Table S25 in the online supplement. Genetic causal proportion analyses implicated several nonpsychiatric genetic risks in EUR SA, including particulate air matter pollution exposure ( $PM_{2.5}$ ), smoking exposures, and pulmonary health factors. Risk factors with significant partial genetic causality estimates are presented in Table S25.

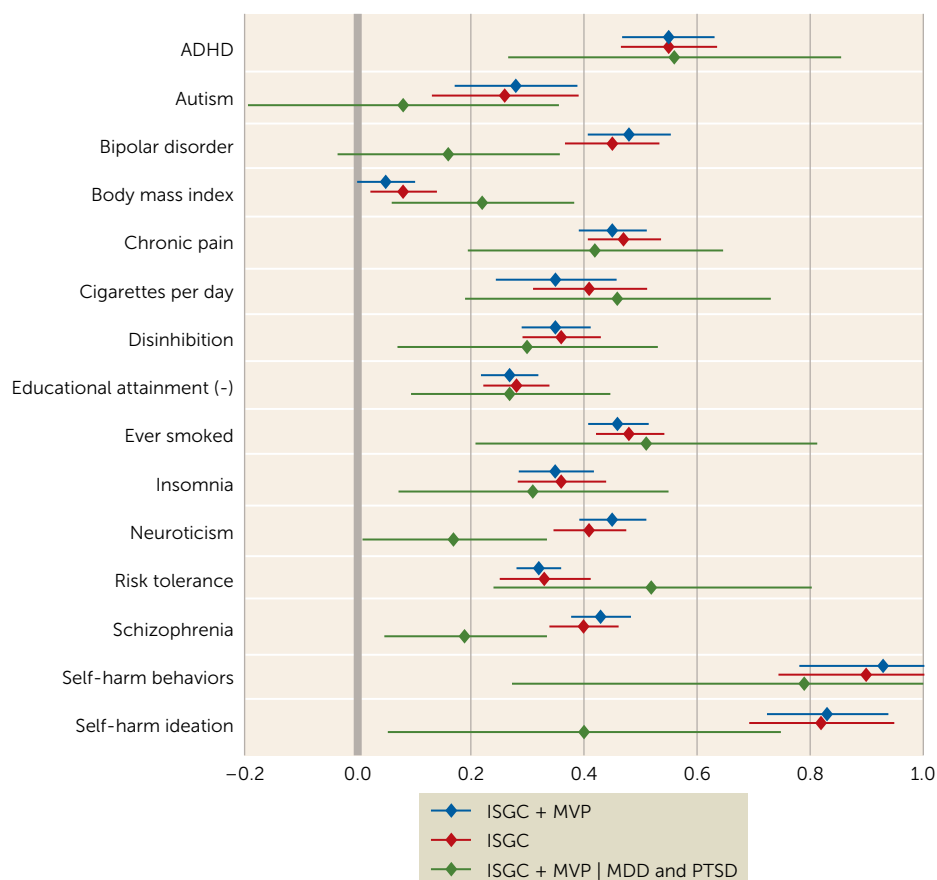
## DISCUSSION

This study reflects the largest GWAS meta-analysis of SA to date, incorporating multiple ancestral admixture populations and expanding the set of GWS loci from four to 12. Discovery of three of the novel GWS loci, and improved

out-of-sample PRS prediction across ancestry, was only possible with the aggregation of all ancestral admixture cohorts. The results show, for the first time, that implicated genes are highly expressed in brain tissue, are enriched in pathways related to gene regulation and transcription, cellular response to stress, DNA repair, and immunologic signatures, and are shared with epidemiological risk factors. Genetic correlation and causal proportion analyses implicate a number of nonpsychiatric genetic risks in SA, including pulmonary health factors. We also provide important evidence that a significant proportion of the common variant genetic architecture of SA is shared across large civilian and veteran populations with disparate demographic characteristics.

One advantage of combining the ISGC with MVP was the opportunity to examine genetic effects across heterogeneous cohorts. For example, the sample composition and ascertainment across the ISGC is predominantly civilian and international, with a larger proportion of females (7). A number of the ISGC samples from the Psychiatric Genomics Consortium cohorts (Table 1) are collected from individuals with major psychiatric disorders, representing a more clinical population. In contrast, the MVP cohorts are predominantly male (8), and all are military veterans ascertained through the U.S. Department of Veterans Affairs health care system. The consistency of SA common variant genetic architecture across EUR MVP and ISGC cohorts indicates that power may be further enhanced by combining future cohorts with differing ascertainment.

As expected, the increase in sample size, and the resulting increase in statistical power, led to the identification of several new GWS loci and improved out-of-sample PRS prediction, across ancestries, relative to the previous ISGC-only analyses. The loci identified in this study implicate genes expressed in brain. Genes associated with SA in this study are highly enriched among psychiatric phenotypes and overall health and wellness risk factors for SA. Brain is the predominant tissue enriched for associated genes, and there

**FIGURE 2. Forest plot of genetic correlations of the multi-ancestry GWAS meta-analyses of suicide attempt with physical and mental health phenotypes<sup>a</sup>**

<sup>a</sup> The x-axis presents genetic correlation values with 95% confidence intervals, and the y-axis presents the discovery GWAS for multiple phenotypes. ISGC=International Suicide Genetics Consortium meta-analysis; ISGC + MVP=the primary meta-analysis including GWASs from both ISGC and Million Veteran Program sets of cohorts; ISGC + MVP | MDD and PTSD=the combined GWAS meta-analysis of both cohorts conditioning on major depressive disorder and posttraumatic stress disorder.

is also significant enrichment in pituitary gland, consistent with previous association of SA with hypothalamic-pituitary-adrenal system dysregulation (54). In addition, the enrichment of pathways related to epigenetics and gene regulation and transcription suggest that epigenetic modifications, such as DNA methylation, may play a role in modulating the effect of SA-associated genetic variants. However, epigenetic pathways were only enriched in GWASs of European ancestry admixtures, pointing to the potential importance and varied impact of epigenetic mechanisms in diverse biological systems that may contribute to SA risk. Pathways enriched in the multi-ancestry GWAS were absent of histone-coding genes and contained protein-coding genes mapped from GWS loci such as *FURIN*, *FES*, and *DRD2*. These multi-ancestry pathway results, while more difficult to interpret, may be more generalizable to the global population.

Drug target enrichment results suggest that SA risk is associated with the targets of antipsychotic and antidepressant drug classes. One explanation may be that psychiatric symptoms associated with SA risk are also associated

with these drug targets, although the direction of any association of drugs with risk cannot be assumed and was not directly tested here. The SMR analysis of EUR results implicated *FES* and *TIAFI* in SA. *FES* has previously been implicated in cross-ancestry schizophrenia (53).

Genetic correlations of SA with ADHD, smoking, pain, and risk tolerance remained significant after conditioning SA on both MDD and PTSD, while those for schizophrenia, bipolar disorder, and neuroticism did not. This suggests a potential role for health factors in SA risk that are both shared with and distinct from psychiatric disorders, as proposed in Mann and Rizk's stress-diathesis model (55) of suicidal behavior based on clinical and biological studies. The suicide diathesis includes altered decision making that may be more pronounced in the context of ADHD and smoking, and may be aggravated by sleep problems. Pain is associated with the stress domain of

suicidal behavior, and is also associated with increased access to prescription opioids. Overall, this study leverages genetic data to examine important risk phenotypes that may or may not be present in medical records.

Some limitations of this study should be considered. First, a meta-analysis of such a large number of diverse cohorts, with different assessments of SA, could reduce statistical power by increasing heterogeneity. Our analyses remain still more conservative with the inclusion of age and sex covariates in three of the ISGC cohorts and MVP. However, GWASs of the primary data sets typically produced significant—and high—genetic correlation estimates. GWS loci produced similar effect sizes across cohorts and across fixed and meta-regression models (correlations of EUR and multi-ancestry GWS effect sizes across models exceeded 0.99). Indeed, the apparent consistency of genetic architecture across EUR ISGC and MVP cohorts is important given marked demographic and ascertainment differences.

This study also provides GWAS meta-analyses specific to African and East Asian ancestry admixtures. The lack of GWS loci specific to these SA meta-analyses underscores a

strong need for greater ancestral diversity and representation in suicide genetics research. With high variability of sample sizes of individual ISGC and MVP ancestral cohorts (case  $N$ s ranging from 115 to 9,196), some GWASs yielded  $h^2$  and  $r_G$  estimates, while others did not. Variability in  $r_G$  indicates that increasing the examination of non-European ancestry admixtures in the future will significantly increase the generalizability of the genetic risk signals identified from studies of suicide phenotypes and the portability of polygenic scores. Importantly, broader ancestral representation, particularly from population-dense areas such as India, West Asia, and the Global South, will be critical for improving the rigor and generalizability of GWAS results in future research.

Implicated genes and established genetic relationships with ADHD, smoking, and risk tolerance help to inform our understanding of biological contributions to risk of SA. From a clinical standpoint, impulsivity, smoking status, and risk-taking behaviors are intuitive comorbid indicators of suicide risk. Genetic causal proportion analyses implicate these and other health factors—pulmonary and cardiovascular—in risk for SA. And our preliminary comparison of genetic correlations across SA versus suicide death GWAS cohorts appears to implicate risk tolerance in the severity of the suicide phenotype. Further study comparing suicide death and SA with individuals with suicidal ideation will allow for a comparison of those who think about suicide and those who act. Importantly, genetic risk for SA, calculated in new independent cohorts using these GWAS summary data, will contribute to a deeper understanding of the clinical implications of genetic risk for suicide. The future addition of multiple ancestral cohorts is likely to yield continued discovery and increased opportunity for clinical translation.

## AUTHOR AND ARTICLE INFORMATION

Huntsman Mental Health Institute, Salt Lake City (Docherty, Shabalin, Murnyak, DiBlasi, Coon); Department of Psychiatry (Docherty, Shabalin, Murnyak, DiBlasi, Bakian, Monson, Coon), Department of Pathology (Christensen), and Biomedical Informatics (Coon), University of Utah School of Medicine, Salt Lake City; Department of Psychiatry, Virginia Commonwealth University, Richmond (Docherty, Edwards, Bigdell, Kendler); Department of Genetics and Genomic Sciences (Mullins, Pinto, Sklar, Stahl), Department of Psychiatry (Mullins, Pinto, Kahn, Sklar), and Department of Neuroscience (Sklar), Icahn School of Medicine at Mount Sinai, New York; Duke Molecular Physiology Institute (Ashley-Koch, Qin, E.R. Hauser, M.A. Hauser), Department of Psychiatry and Behavioral Sciences (Dennis), and Duke Molecular Physiology Institute (Garrett), Duke University Medical Center, Durham, N.C.; NIH Maudsley Biomedical Research Centre at South London and Maudsley NHS Foundation Trust, King's College London (Coleman, Breen); Social Genetic and Developmental Psychiatry Centre, King's College London (Coleman, McGuffin, Power, Rivera, Breen, Lewis); Division of Genetic Medicine, Department of Medicine, Vanderbilt University Medical Center, and Vanderbilt Genetics Institute, Nashville, Tenn. (Kang, Ruderfer); Department of Biomedical Informatics, Vanderbilt University Medical Center, Nashville, Tenn. (Ruderfer); Department of Psychiatry and Behavioral Sciences, Vanderbilt University Medical Center, Nashville, Tenn.

(Ruderfer); Department of Psychiatry (Wendt, Polimanti) and Division of Human Genetics, Department of Psychiatry (Levey, Gelernter), Yale University School of Medicine, New Haven, Conn.; Division of Psychiatry (Adams, Hafferty, McIntosh), Institute for Genetics and Molecular Medicine (Porteous), and Centre for Clinical Brain Sciences (Smith), University of Edinburgh, Edinburgh; Mental Health and Neuroscience Research Program (Campos, Renteria, Martin, Medland) and Department of Population Health (Olsen, Whiteman), QIMR Berghofer Medical Research Institute, Brisbane, Australia; Institute for Molecular Bioscience (Campos, Byrne, Trzaskowski, Wray), School of Biomedical Sciences, Faculty of Medicine (Renteria), Child Health Research Centre (Byrne), and Queensland Brain Institute (Mehta, Wray), University of Queensland, Brisbane, Australia; Neuroscience Research Australia, Sydney (Fullerton, Gatt, Green, Schofield, C.S. Weickert, T.W. Weickert); School of Medical Sciences (Fullerton, Schofield), School of Psychology (Bryant, Gatt), and School of Psychiatry (P.B. Mitchell, Green, G. Roberts, C.S. Weickert, T.W. Weickert), University of New South Wales, Sydney, Australia; Department of Psychiatry (Kranzler, Oslin), Center for Neurobiology and Behavior, Department of Psychiatry (Berrettini), and Center for Applied Genomics and Department of Pediatrics (Hakonarson), Perelman School of Medicine, University of Pennsylvania, Philadelphia; Crescenz VAMC, VISN 4 MIRECC, Philadelphia (Kranzler); Department of Psychiatry and Behavioral Sciences, University of Texas Health Science Center, Houston (Walss-Bass); Division of Mental Health and Addiction (Andreassen, Melle, Smeland) and Department of Medical Genetics (Djurovic), Oslo University Hospital, Oslo; NORMENT, University of Oslo, Oslo (Andreassen, Smeland); Department of Forensic Medicine, All-India Institute for Medical Sciences, Delhi (Behera); Department of Medical Epidemiology and Biostatistics (Bulik, Landén), National Centre for Suicide Research and Prevention of Mental Ill-Health (NASP), LIME (Sokolowski, Wasserman), Department of Clinical Neuroscience, Centre for Psychiatry Research (Agartz), Department of Clinical Neuroscience (Alfredsson), and Institute of Environmental Medicine (Alfredsson), Karolinska Institutet, Stockholm; Department of Nutrition (Bulik), Department of Psychiatry (Bulik, Thornton, Watson, Yilmaz), and Department of Genetics (Yilmaz), University of North Carolina at Chapel Hill; Department of Medical and Molecular Genetics (Edenberg, Nurnberger), Department of Biochemistry and Molecular Biology (Edenberg), and Department of Psychiatry (Nurnberger), Indiana University School of Medicine, Indianapolis; Department of Health Care Policy, Harvard Medical School, Boston (Kessler); Departments of Psychiatry and Radiology (Mann), Department of Biostatistics (Galfalvy), and Department of Psychiatry (Galfalvy, Otsuka, McGrath, Weissman), Columbia University College of Physicians and Surgeons, New York; Department of Psychiatry, Lausanne University Hospital and University of Lausanne, Lausanne, Switzerland (Pistis, Castelao, Preisig); Central Institute of Mental Health, Medical Faculty Mannheim, University of Heidelberg, Department of Genetic Epidemiology in Psychiatry, Mannheim, Germany (Streit, Witt, Zillich); Department of Psychiatry, Uniformed University of the Health Sciences, Bethesda (Ursano); Durham Veterans Affairs Health Care System, Durham, N.C. (Hair); Miami VA Health Care System, Miami (Harvey); Cooperative Studies Program Epidemiology Center, Durham Veterans Affairs Health Care System, Durham, N.C. (Hauser); Boston VA Health Care System, Boston (Huffman); Oak Ridge National Laboratory, Oak Ridge, Tenn. (Jacobson); Argonne National Laboratory, University of Chicago Consortium for Advanced Science and Engineering, Chicago (Madduri); Theoretical Division, Los Alamos National Laboratory, Los Alamos, N.M. (McMahon); Corporal Michael J. Crescenz VA Medical Center, VISN 4 Mental Illness Research, Education, and Clinical Center, Philadelphia (Oslin); VA Program Evaluation and Resource Center, VA Palo Alto Health Care System, Palo Alto, Calif. (Trafton); Department of Psychiatry and Psychotherapy, Charité-Universitätsmedizin Berlin, Berlin (Awasthi, Ripke); Central Institute of Mental Health, Medical Faculty Mannheim, Department of Psychosomatic Medicine and Psychotherapy, University of Heidelberg, Mannheim, Germany (Bohus, Schmahl); Center for Applied Genomics, Children's Hospital of Philadelphia, Philadelphia (Chang, Guo,

Hakonarson, D. Li); Department of Psychiatry, National Taiwan University Hospital, Taipei (H.C. Chen, W.J. Chen, S.-C. Liao, Kuo, Liu); Center for Neuropsychiatric Research, National Health Research Institutes, Miaoli County, Taiwan (W.J. Chen); Institute of Epidemiology and Preventive Medicine, College of Public Health, National Taiwan University, Taipei (W.J. Chen, Su, Kuo); Utah Office of the Medical Examiner, Utah Department of Health and Human Services, Taylorsville (Christensen); Department of Psychiatry, University of Minnesota, Minneapolis (Crow); GHU Paris Psychiatrie et Neurosciences, Hôpital Sainte-Anne, Paris (Duriez, Gorwood); Institute of Psychiatry and Neuroscience of Paris, Université Paris Cité, INSERM U1266, Paris (Duriez, Gorwood, Ramoz); Department of Psychiatry, University Hospital Bellvitge-IDIBELL and CIBEROBN, Barcelona, Spain (Fernández-Aranda, Jiménez-Murcia); Department of Psychiatry (Kaplan, Kennedy, Woodside, Kloiber, Zai), Institute of Medical Science (Kaplan, Kennedy, Woodside, Zai), McLaughlin Center (Scherer), and Department of Laboratory Medicine and Pathobiology (Zai), University of Toronto, Toronto; Department of Psychiatry and Biobehavioral Science, Semel Institute, David Geffen School of Medicine, University of California, Los Angeles (Gandal, Kim, Ophoff, Strober); Department of Psychiatry, Weill Cornell Medical College, New York (Halimi); Department of Psychiatry, Yokohama City University Graduate School of Medicine, Yokohama, Japan (Hishimoto); Biostatistics Research Center, Herbert Wertheim School of Public Health and Human Longevity Science (Jain), Department of Psychiatry (Braff, Kelsoe, Nievergelt, Stein, Tsuang), Institute for Genomic Medicine (Kelsoe), Center for Behavioral Genomics, and School of Public Health (Stein), University of California San Diego, La Jolla; Translational Neuropsychiatry, Fondation FondaMental, University of Paris-Est-Créteil, INSERM, IMRB, Créteil (Jamain); Eating Recovery Center, Denver (Johnson); Centre for Addiction and Mental Health, Toronto (Kaplan, Kennedy, Kloiber), Molecular Brain Science, Centre for Addiction and Mental Health (Vincent), and Molecular Brain Science, Campbell Family Mental Health Research Institute (Zai), Centre for Addiction and Mental Health, Toronto; Department of Psychiatry, University of California San Diego, San Diego (Kaye); Department of Psychology, Florida State University, Tallahassee (Keel); Department of Psychology, Michigan State University, Lansing (Klump); Department of Psychiatry, Veterans Affairs Connecticut Healthcare Center, West Haven (Levey, Gelernter); Department of Psychiatry and Psychotherapy, University Medical Center, Mainz, Germany (Lieb); Department of Clinical Psychology, Chicago School of Professional Psychology, Washington D.C. (Lilenfeld); Department of Psychiatry and Behavioral Sciences, Emory University School of Medicine, Atlanta (Powers, Binder); Department of Paediatric Laboratory Medicine (Marshall), and Department of Genetics and Genomic Biology (Scherer), Hospital for Sick Children, Toronto; Department of Psychiatry and Behavioral Science, University of North Dakota School of Medicine and Health Sciences, Fargo (J.E. Mitchell); Department of Psychiatry, Kobe University Graduate School of Medicine, Kobe, Japan (Okazaki, Otsuka); Stanley Center for Psychiatric Research (Ripke, Koenen, Lee, Smoller, C. Liao), and Program in Medical and Population Genetics (Stahl), Broad Institute, Cambridge, Mass.; Analytical and Translational Genetics Unit (Ripke, Lee, C. Liao), Department of Psychiatry (Koenen, Smoller), and Psychiatric and Neurodevelopmental Genetics Unit (Lee, Smoller), Massachusetts General Hospital, Boston; Charité-Universitätsmedizin Berlin, Corporate Member of Freie Universität Berlin, Humboldt-Universität zu Berlin, Department of Psychiatry, Berlin Institute of Health, Campus Benjamin Franklin, Berlin (Roepke); Department of Psychology, Saint Petersburg State University, Saint Petersburg, Russian Federation (Rozanov); Department of Borderline Disorders and Psychotherapy, V.M. Bekhterev National Medical Research Center for Psychiatry and Neurology, Saint Petersburg, Russian Federation (Rozanov); Centre for Genomics and Personalized Medicine, CGPM (Starnawska, Børglum, Demontis), Centre for Integrative Sequencing, iSEQ, Aarhus, Denmark (Starnawska, Børglum, Demontis); Department of Biomedicine (Starnawska, Børglum, Demontis), iPSYCH, Lundbeck Foundation Initiative for Integrative Psychiatric Research (Starnawska, Børglum, Demontis, Erlangsen), National Centre for Register-Based Research (Yilmaz,

Agerbo), and Centre for Integrated Register-Based Research (Agerbo), Aarhus University, Aarhus, Denmark; Psychosis Research Unit, Aarhus University Hospital, Risskov, Aarhus, Denmark (Mors); Institute of Psychiatry, Psychology, and Neuroscience, Department of Psychological Medicine, King's College London (Treasure); National Institute for Health Research Biomedical Research Centre, King's College London and South London and Maudsley National Health Service Foundation Trust, London (Treasure); Population Studies Center and Survey Research Center, Institute for Social Research (Ware), and Center for Statistical Genetics and Department of Biostatistics (Boehnke, Scott), University of Michigan, Ann Arbor; School of Psychology, Curtin University, Perth, Australia (Watson); Division of Paediatrics, University of Western Australia, Perth, Australia (Watson); Centre for Mental Health and Program for Eating Disorders, University Health Network, Toronto (Woodside); Department of Clinical Sciences, Psychiatry, Umeå University Medical Faculty, Umeå, Sweden (Adolfsson); Department of Psychiatric Research, Diakonhjemmet Hospital, Oslo (Agartz); NORMENT, Institute of Clinical Medicine, University of Oslo, Oslo (Agartz); Department of Psychiatry, Dalhousie University, Halifax, Canada (Alda); National Institute of Mental Health, Klecany, Czech Republic (Alda); Institute of Biological Psychiatry, Copenhagen Mental Health Services, Copenhagen University Hospital, Copenhagen (Appadurai, Werge); iPSYCH, Lundbeck Foundation Initiative for Integrative Psychiatric Research, Copenhagen (Appadurai); Department of Psychiatry, Hospital Universitari Vall d'Hebron, Barcelona, Spain (Artigas, Ramos-Quiroga, Ribasés, Richarte, Vilar-Ribó); Biomedical Network Research Centre on Mental Health (CIBERSAM), Instituto de Salud Carlos III, Madrid (Artigas, Ramos-Quiroga, Ribasés, Richarte); Department of Genetics, Microbiology, and Statistics, University of Barcelona, Barcelona, Spain (Artigas, Ribasés); Psychiatric Genetics Unit, Group of Psychiatry, Mental Health and Addiction, Vall d'Hebron Research Institute (VHIR), Universitat Autònoma de Barcelona, Barcelona, Spain (Artigas, Ramos-Quiroga, Ribasés, Vilar-Ribó); Department of Psychiatry and Psychotherapy, University Medicine Greifswald, Greifswald, Germany (Van der Auwera, Grabe); German Centre for Neurodegenerative Diseases (DZNE), Partner Site Rostock/Greifswald, Greifswald, Germany (Van der Auwera, Grabe); Department of Psychiatry, University of Coimbra, Coimbra, Portugal (Azevedo); Division of Psychiatry, University College London (Bass, McQuillan); Laboratory of Developmental Psychiatry, Hospital de Clínicas de Porto Alegre, Porto Alegre, Brazil (Bau); Department of Genetics, Universidade Federal do Rio Grande do Sul, Porto Alegre, Brazil (Bau); Department of Psychiatry, Melbourne Medical School, University of Melbourne, Melbourne, Australia (Baune); Department of Psychiatry (Baune) and Institute of Epidemiology and Social Medicine (Berger), University of Münster, Münster, Germany; Department of Psychiatry and Addiction Medicine, Assistance Publique-Hôpitaux de Paris, Paris (Bellivier); Paris Bipolar and TRD Expert Centers, FondaMental Foundation, Paris (Bellivier); Team 1, Biomarkers of relapse and therapeutic response in addiction and mood disorders, INSERM, UMR-S 1144, Paris (Bellivier); Psychiatry, Université Paris Cité, Paris (Bellivier); Health Sciences Research, Mayo Clinic, Rochester, Minn. (Biernacka); Department of Psychiatry and Behavioral Sciences, State University of New York Downstate Medical Center, New York (Bigdeli); Department of Translational Research in Psychiatry, Max Planck Institute of Psychiatry, Munich (Binder); Psychiatry, UMC Utrecht Brain Center, Utrecht, Netherlands (Boks); Department of Psychiatry and Legal Medicine, Universitat Autònoma de Barcelona, Barcelona, Spain (Ramos-Quiroga, Richarte); Institute of Psychiatric Phenomics and Genomics (IPPG), University Hospital, Ludwig Maximilian University of Munich, Munich (Budde, Schulze); Department of Psychiatry, UMC Utrecht Hersencentrum Rudolf Magnus, Utrecht, Netherlands (Cahn); Mental Health Unit, Department of Psychiatry, Faculty of Medicine, Granada University Hospital Complex, University of Granada, Granada, Spain (Cervilla); Institut de Psychiatrie, CNRS GDR 3557, Paris (Chaumette, Krebs); Department of Evaluation, Prevention, and Therapeutic Innovation, GHU Paris Psychiatrie et Neurosciences, Paris (Chaumette, Krebs); Institute of Psychiatry and Neuroscience of Paris, INSERM U1266, Team Pathophysiology of Psychiatric Diseases, Université de Paris, Paris (Chaumette, Krebs); Institute of

Medical Genetics and Pathology, University Hospital Basel, and Department of Biomedicine, University of Basel, Basel, Switzerland (Hoffmann); Institute of Human Genetics, University of Bonn, School of Medicine, and University Hospital Bonn, Bonn, Germany (Forstner, Heilmann-Heimbach, Hoffmann, Nöthen); Neuropsychiatric Genetics Research Group, Department of Psychiatry and Trinity Translational Medicine Institute, Trinity College Dublin, Dublin (Corvin); Medical Research Council Centre for Neuropsychiatric Genetics and Genomics, Division of Psychological Medicine and Clinical Neurosciences, Cardiff University, Cardiff, U.K. (Craddock, Hamshere, I. Jones, O'Donovan, Owen, Walters); NORMENT, KG Jebsen Centre for Psychosis Research, Department of Clinical Science, University of Bergen, Bergen, Norway (Djurovic); Department of Genetic Epidemiology in Psychiatry, Central Institute of Mental Health, Medical Faculty Mannheim, Heidelberg University, Mannheim, Germany (Foa, Schulze, Sirignano, Rietschel); Center for Human Genetics, University of Marburg, Marburg, Germany (Forstner); Department of Psychiatry and Psychology, Mayo Clinic, Rochester, Minn. (Frye); Department of Psychiatry and Behavioral Sciences, NorthShore University HealthSystem, Evanston, Ill. (Sanders); Department of Psychiatry and Behavioral Neuroscience, University of Chicago, Chicago (Sanders); Comprehensive Center for Clinical Neurosciences and Mental Health (Giegling, Hartmann) and Department of Psychiatry and Psychotherapy (Hartmann), Medical University of Vienna, Vienna; ADHD Outpatient Program, Adult Division, Hospital de Clínicas de Porto Alegre, Porto Alegre, Brazil (Grevet); Department of Psychiatry, Universidade Federal do Rio Grande do Sul, Porto Alegre, Brazil (Grevet); Biometric Psychiatric Genetics Research Unit, Alexandru Obregia Clinical Psychiatric Hospital, Bucharest, Romania (Grigoriu-Serbanescu); Department of Psychiatry, Faculty of Medicine and Biomedical Research Centre (CIBM), University of Granada, Granada, Spain (Gutierrez); Biomedicine Institute (IBIMA), Mental Health Department, University Regional Hospital, Málaga, Spain (Guzman-Parra, Mayoral); Psychiatric Genetics, Department of Psychiatry, Poznan University of Medical Sciences, Poznan, Poland (J. Hauser); Max Planck Institute of Psychiatry, Munich (Ising, Kloiber); Department of Psychological Medicine, University of Worcester, Worcester, U.K. (L.A. Jones); Department of Psychiatry and Neuroscience (Jonsson) and Institute of Neuroscience and Physiology (Landén), University of Gothenburg, Gothenburg, Sweden; Psychiatry, UMC Utrecht Brain Center Rudolf Magnus, Utrecht, Netherlands (Kahn); Department of Epidemiology (Koenen, Zai) and Department of Environmental Health (A. Roberts), Harvard T.H. Chan School of Public Health, Boston; Center for Research in Environmental Epidemiology (CREAL), Barcelona, Spain (Kogevinas); INSERM, AP-HP, IMRB, Translational Neuropsychiatry, DMU IMPACT, FHU ADAPT, Fondation FondaMental, Université Paris Est, Créteil, France (Leboyer); INSERM, Paris (Leboyer); Faculté de Médecine, Université Paris Est, Créteil, France (Leboyer); Department of Psychiatry and Behavioral Sciences, Stanford University, Stanford (Levinson, Williams); Maria Skłodowska-Curie National Research Institute of Oncology, Warsaw (Lissowska); Research Institute, Lindner Center of HOPE, Mason, Ohio (McElroy); School of Psychology and Counseling, Queensland University of Technology, Brisbane, Australia (Mehta); Institute of Clinical Medicine, Division of Mental Health and Addiction, University of Oslo, Oslo (Melle); Department of Nursing, Faculty of Health Sciences and Biomedical Research Centre (CIBM), University of Granada, Granada, Spain (Molina); Mental Health, Faculty of Medicine and Health Sciences, Norwegian University of Science and Technology—NTNU, Trondheim (Morken); Psychiatry, St. Olavs University Hospital, Trondheim, Norway (Morken); Psychiatry, Erasmus University Medical Center, Rotterdam, Netherlands (Ophoff); Robert Wood Johnson Medical School, Rutgers New Jersey Medical School, University Behavioral Health Care, Rutgers University, Piscataway, N.J. (C. Pato); Robert Wood Johnson Medical School, Rutgers New Jersey Medical School, Rutgers University, Piscataway, N.J. (M.T. Pato); Department of Psychiatry and Amsterdam Neuroscience, Amsterdam UMC, Vrije Universiteit, Amsterdam (Penninx); Department of Psychiatry and Behavioral Sciences, Johns Hopkins

University School of Medicine, Baltimore (Potash, Schulze); Genetics, BioMarin Pharmaceuticals, London (Power); St. Edmund Hall, University of Oxford, Oxford, U.K. (Power); Department of Psychiatry, University of Oxford, Oxford, U.K. (Quested); Department of Psychiatry, Psychosomatic Medicine, and Psychotherapy, University Hospital Frankfurt, Frankfurt, Germany (Reif); Department of Biochemistry and Molecular Biology II and Institute of Neurosciences, Biomedical Research Centre (CIBM), University of Granada, Granada, Spain (Rivera); Department of Neurology and Neurosurgery, Faculty of Medicine, McGill University, and Montreal Neurological Institute and Hospital, Montreal (Rouleau); Department of Physiology and Biophysics, Instituto de Ciencias Biomedicas Universidade de Sao Paulo, São Paulo, Brazil (Rovaris); Human Genetics Branch, Intramural Research Program, NIMH, Bethesda (Schulze); Department of Psychiatry and Psychotherapy, University Medical Center Göttingen, Göttingen, Germany (Schulze); Department of Biomedical and Neuromotor Sciences, University of Bologna, Bologna, Italy (Serretti); Division of Cancer Epidemiology and Genetics, National Cancer Institute, Bethesda (Shi); Institute of Psychology, Psychiatry, and Neuroscience, King's College London (Sonuga-Barke); Department of Psychiatry, McGill University, Montreal (Turecki); Institute for Community Medicine, University Medicine Greifswald, Greifswald, Germany (Völzke); Division of Translational Epidemiology, New York State Psychiatric Institute, New York (Weissman); iPSYCH, Lundbeck Foundation Initiative for Integrative Psychiatric Research, Aarhus, Denmark (Agerbo, Hougaard, Mors, Nordentoft, Werge); Centre for Mental Health Research, Australian National University, Canberra (Erlangsen); Department of Mental Health, Johns Hopkins Bloomberg School of Public Health, Baltimore (Erlangsen); Danish Research Institute for Suicide Prevention, Mental Health Centre Copenhagen, Copenhagen (Erlangsen); Department of Psychiatry and Behavioral Sciences, SUNY Upstate Medical University, Syracuse, N.Y. (Glatt); Center for Neonatal Screening, Department for Congenital Disorders, Statens Serum Institut, Copenhagen (Hougaard); Department of Psychiatry, National Taiwan University Hospital and College of Medicine, Taipei (Hwu); Department of Medical and Molecular Genetics, King's College London (Lewis); Neuroscience, Janssen Research and Development, Titusville, N.J. (Q.S. Li); Mental Health Center Copenhagen, Copenhagen University Hospital, Copenhagen (Nordentoft); Analytical Genetics and Data Science, Regeneron Genetics Center, Tarrytown, N.Y. (Stahl); Department of Clinical Medicine, University of Copenhagen, Copenhagen (Werge); Lundbeck Foundation GeoGenetics Centre, GLOBE Institute, University of Copenhagen, Copenhagen (Werge); Department of Psychiatry, University of Iowa, Iowa City (Willour, Coon); VISN 6 Mid-Atlantic Mental Illness Research, Education, and Clinical Center, Durham Veterans Affairs Health Care System, Durham, N.C. (Beckham, Kimbrel); Department of Psychiatry and Behavioral Sciences, Duke University School of Medicine, Durham, N.C. (Beckham, Kimbrel).

Send correspondence to Dr. Docherty (anna.docherty@utah.edu).

Drs. Docherty, Mullins, and Ashley-Koch contributed equally to this study. Drs. Beckham, Kimbrel, Ruderfer are senior authors of this study.

Presented at the World Congress of Psychiatric Genetics, 2022, Florence, Italy.

This work was supported by NIMH (grants R01MH123619, R01MH123489, R01MH099134, K01MH109765, R01MH116269, and R01MH121455). This research is also based on data from the U.S. Department of Veterans Affairs Million Veteran Program (MVP) and was supported by award I01CX001729 from the Clinical Science Research and Development Service of the Veterans Health Administration Office of Research and Development. Dr. Beckham was also supported by a Senior Research Career Scientist Award (IK6BX003777) from Clinical Science Research and Development. Research reported here was supported by the National Institute of General Medical Sciences under award T32GM007347 (Dr. Kang). This work was also supported by Brain and Behavior Research Foundation/NARSAD Young Investigator Awards to Dr. Mullins (29551), to

Dr. Shabalin (28686), and to Dr. DiBlasi (28132). Work was supported by the Huntsman Mental Health Institute, the American Foundation for Suicide Prevention (Drs. Docherty, Shabalin, DiBlasi, Bakian, and Coon), and the Clark Tanner Research Foundation. This work was also supported by research funding from Janssen Research and Development to University of Utah. Data from the Utah cohort are available through the Utah Population Database, which is partially supported by the Huntsman Cancer Institute and award P30CA42014 from the National Cancer Institute. Several statistical analyses were carried out on the Mount Sinai high-performance computing cluster (<http://hpc.mssm.edu>), which is supported by the NIH Office of Research Infrastructure (grants S10OD018522 and S10OD026880). This work was also conducted in part using the resources of the Advanced Computing Center for Research and Education at Vanderbilt University and the Huntsman Mental Health Institute at the University of Utah School of Medicine.

The views expressed here are those of the authors and do not necessarily represent the views of the Department of Veteran Affairs or the U.S. government.

The authors thank and acknowledge the MVP, the MVP Suicide Exemplar Workgroup, and the International Suicide Genetics Consortium (ISGC) for their contributions to this study. A complete list of contributors from the MVP, MVP Suicide Exemplar Workgroup, and the ISGC is provided in the online supplement.

Dr. Campos is an employee of Regeneron Pharmaceuticals and may own stock or stock options. Dr. Kranzler has served as an advisory board member for Clearmind Medicine, Dicerna Pharmaceuticals, Enthion Pharmaceuticals, and Sophrosyne Pharmaceuticals and as a consultant for Sobrera Pharmaceuticals; he has received research funding and medication supplies for an investigator-initiated study from Alkermes; he is a member of the American Society of Clinical Psychopharmacology's Alcohol Clinical Trials Initiative, which was supported in the past 3 years by Alkermes, Dicerna, Ethypharm, Lundbeck, Mitsubishi, Otsuka, and Pear Therapeutics; and he is a holder of U.S. patent 10,900,082 ("Genotype-guided dosing of opioid agonists"). Dr. Andreassen has served as national principal investigator for clinical trials sponsored by BI, Janssen, and MAPS; he has served as a consultant for Cortechs.ai and as a speaker for Janssen, Lundbeck, and Sunovion. Dr. Bulik has received grant support from Lundbeckfonden and royalties from Pearson, and she serves as a stakeholder advisory board member for Equip Health. Dr. Kessler has served as a consultant for Cambridge Health Alliance, Canandaigua VA Medical Center, Holmusk, Partners Healthcare, RallyPoint Networks, and Sage Therapeutics, and he has stock options in Cerebral, Mirah, PYM, Roga Sciences, and Verisense Health. Dr. Mann receives royalties for commercial use of the C-SSRS from the Research Foundation for Mental Hygiene. Dr. Polimanti has received a research grant from Alkermes and is co-editor-in-chief of *Complex Psychiatry*. Dr. Fernández-Aranda has served as a consultant for Novo Nordisk and is editor-in-chief of *European Eating Disorders Review*. Dr. Gorwood has received served as speaker or on scientific boards for Biogen, Janssen, Lundbeck, Merck, Otsuka, Richter, and Viatrix. Dr. Jiménez-Murcia has served as a consultant for Novo Nordisk. Dr. Kennedy served as a scientific advisory board member for Myriad Neurosciences. Dr. Roepke has received personal fees from Bionorica SE, Boehringer Ingelheim, Janssen, Otsuka, and Stillachhaus and has received grant support from Innovationsfond. Dr. Scherer has served on scientific advisory committees for Population Bio and Deep Genomics and as a Highly Cited Academic Advisor for King Abdulaziz University, and he is a holder of intellectual property rights stemming from research at the Hospital for Sick Children and licensed to Athena Diagnostics and Population Bio. Dr. Schmahel has served as a consultant for Boehringer Ingelheim. Dr. Appadurai has received support from a Lundbeck foundation postdoctoral grant. Dr. Baune has served as a speaker or consultant for AstraZeneca, Biogen, Boehringer-Ingelheim, Bristol-Myers Squibb, Janssen-Cilag, LivaNova, Lundbeck, Otsuka, Pfizer, Servier, and Takeda. Dr. Frye has received grant Support from Assurex Health, Mayo Foundation, Milken Institute, CME travel honoraria from the American Physician Institute and Carnot Laboratories, and he owns stock

in Chymia. Dr. Gatt is a stockholder in MAP Biotech Pty Ltd. Dr. Grabe has received travel grants from and served as a speaker for Fresenius Medical Care, Janssen Cilag, Neuraxpharm, and Servier, and he has received research funding from Fresenius Medical Care. Dr. Grevet has served as a speaker for Janssen, Shire, and Takeda. Dr. Landén has served as a speaker for Lundbeck. Dr. Heilmann-Heimbach is an employee of Life & Brain GmbH. Dr. McElroy has received grant support from Idorsia Pharmaceuticals, Jazz, Myriad, Novo Nordisk, Otsuka, and Sunovion and has served as a consultant for Idorsia Pharmaceuticals, Intracellular Therapies, Levo, Otsuka, Sunovion, and Takeda. Dr. Mitchell has served as a speaker or advisory board member for Janssen (Australia) and Sanofi (Hangzhou). Dr. Nöthen has received fees for membership in an advisory board from HMG Systems Engineering GmbH, for membership in the Medical-Scientific Editorial Office of the *Deutsches Ärzteblatt*, and for serving as a consultant for EVERIS Belgique SPRL in a project of the European Commission (REFORM/SC2020/029); he receives salary payments from and holds shares in Life & Brain GmbH. Dr. O'Donovan has received research grants from Akkrivia Health and Takeda. Dr. Owen has received research grants from Akkrivia Health and Takeda. Dr. Power is an employee and equity owner of BioMarin Pharmaceuticals. Dr. Ramos-Quiroga has served as a speaker or consultant for Bial, Biogen, Bristol-Myers Squibb, Janssen-Cilag, Novartis, Medice, Raffo, Rubió, Shionogi, Shire, Sincrolab, Takeda, Technofarma, and Uriach and he has received travel grants from Bial, Janssen-Cilag, Medice, Rubió, Shionogi, Shire, and Takeda. Dr. Smoller serves as an advisory board member for the Leon Levy Foundation and Sensorium Therapeutics (with equity); he has received grant support from Biogen; and he is principal investigator of a collaborative study sponsored by 23andMe (for which 23andMe provides analysis time as in-kind support but no payments). Dr. Walters has received grants from Akkrivia Health and Takeda. Dr. Zai holds patents for suicide markers. Dr. Børglum has received research grants from the Lundbeck Foundation. Dr. Demontis has served as a speaker for Medice Nordic. Dr. Q.S. Li is an employee of Janssen Research and Development and an equity shareholder in Johnson & Johnson. Dr. Stahl is an employee of and stockholder in Regeneron Pharmaceuticals. Dr. Stein has served as a consultant for Acadia Pharmaceuticals, Aptinyx, atai Life Sciences, BigHealth, Biogen, Bionomics, BioXcel Therapeutics, Boehringer Ingelheim, Clexio, Eisai, EmpowerPharm, Engrail Therapeutics, Janssen, Jazz Pharmaceuticals, NeuroTrauma Sciences, PureTech Health, Sage Therapeutics, Sumitomo Pharma, and Roche/Genentech; he holds has stock options in Oxeia Biopharmaceuticals and EpiVario; he has served as editor-in-chief of *Depression and Anxiety*, deputy editor of *Biological Psychiatry*, and co-editor-in-chief for psychiatry for *UpToDate*; and he has served as a scientific advisory board member for the Anxiety and Depression Association of America and the Brain and Behavior Research Foundation. Dr. Whiteman has served as speaker for Pierre Fabre Australia. The other authors report no financial relationships with commercial interests.

Received December 29, 2021; revisions received July 17, 2022, and March 23, 2023; accepted May 4, 2023.

## REFERENCES

1. World Health Organization: Suicide. 2021. <https://www.who.int/news-room/fact-sheets/detail/suicide>
2. World Health Organization: Preventing Suicide: A Global Imperative. Geneva, World Health Organization, 2014. <https://apps.who.int/iris/rest/bitstreams/585331/retrieve>
3. Substance Abuse and Mental Health Services Administration (SAMHSA), Center for Behavioral Health Statistics and Quality: National Survey on Drug Use and Health, 2021. <https://www.samhsa.gov/data/release/2021-national-survey-drug-use-and-health-nsduh-releases>
4. Centers for Disease Control and Prevention: CDC WONDER Online Database. 2023. <https://wonder.cdc.gov/>
5. Franklin JC, Ribeiro JD, Fox KR, et al: Risk factors for suicidal thoughts and behaviors: a meta-analysis of 50 years of research. *Psychol Bull* 2017; 143:187–232



6. Voracek M, Loibl LM: Genetics of suicide: a systematic review of twin studies. *Wien Klin Wochenschr* 2007; 119:463–475
7. Mullins N, Kang J, Campos AI, et al: Dissecting the shared genetic architecture of suicide attempt, psychiatric disorders, and known risk factors. *Biol Psychiatry* 2022; 91:313–327
8. Kimbrel NA, Ashley-Koch AE, Qin XJ, et al: A genome-wide association study of suicide attempts in the Million Veterans Program identifies evidence of pan-ancestry and ancestry-specific risk loci. *Mol Psychiatry* 2022; 27:2264–2272
9. Gaziano JM, Concato J, Brophy M, et al: Million Veteran Program: a mega-biobank to study genetic influences on health and disease. *J Clin Epidemiol* 2016; 70:214–223
10. Sullivan PF, Agrawal A, Bulik CM, et al: Psychiatric genomics: an update and an agenda. *Am J Psychiatry* 2018; 175:15–27
11. Martin AR, Gignoux CR, Walters RK, et al: Human demographic history impacts genetic risk prediction across diverse populations. *Am J Hum Genet* 2017; 100:635–649
12. Docherty AR, Shabalin AA, DiBlasi E, et al: Genome-wide association study of suicide death and polygenic prediction of clinical antecedents. *Am J Psychiatry* 2020; 177:917–927
13. Hoffmire C, Stephens B, Morley S, et al: VA Suicide Prevention Applications Network: a national health care system-based suicide event tracking system. *Public Health Rep* 2016; 131: 816–821
14. Bulik-Sullivan BK, Loh PR, Finucane HK, et al: LD score regression distinguishes confounding from polygenicity in genome-wide association studies. *Nat Genet* 2015; 47:291–295
15. Fang H, Hui Q, Lynch J, et al: Harmonizing genetic ancestry and self-identified race/ethnicity in genome-wide association studies. *Am J Hum Genet* 2019; 105:763–772
16. Chang CC, Chow CC, Tellier LC, et al: Second-generation PLINK: rising to the challenge of larger and richer datasets. *Gigascience* 2015; 4:7
17. Willer CJ, Li Y, Abecasis GR: METAL: fast and efficient meta-analysis of genomewide association scans. *Bioinformatics* 2010; 26: 2190–2191
18. Luo Y, Li X, Wang X, et al: Estimating heritability and its enrichment in tissue-specific gene sets in admixed populations. *Hum Mol Genet* 2021; 30:1521–1534
19. Karczewski KJ, Francioli LC, Tiao G, et al: The mutational constraint spectrum quantified from variation in 141,456 humans. *Nature* 2020; 581:434–443
20. Nock MK, Borges G, Bromet EJ, et al: Cross-national prevalence and risk factors for suicidal ideation, plans and attempts. *Br J Psychiatry* 2008; 192:98–105
21. Brown BC, Asian Genetic Epidemiology Network Type 2 Diabetes Consortium, Ye CJ, et al: Transethnic genetic-correlation estimates from summary statistics. *Am J Hum Genet* 2016; 99: 76–88
22. Campos AI, Verweij KJH, Statham DJ, et al: Genetic aetiology of self-harm ideation and behaviour. *Sci Rep* 2020; 10:9713
23. Demontis D, Walters RK, Martin J, et al: Discovery of the first genome-wide significant risk loci for attention deficit/hyperactivity disorder. *Nat Genet* 2019; 51:63–75
24. Grove J, Ripke S, Als TD, et al: Identification of common genetic risk variants for autism spectrum disorder. *Nat Genet* 2019; 51: 431–444
25. Karlsson Linnér R, Birol P, Kong E, et al: Genome-wide association analyses of risk tolerance and risky behaviors in over 1 million individuals identify hundreds of loci and shared genetic influences. *Nat Genet* 2019; 51:245–257
26. Nagel M, Jansen PR, Stringer S, et al: Meta-analysis of genome-wide association studies for neuroticism in 449,484 individuals identifies novel genetic loci and pathways. *Nat Genet* 2018; 50: 920–927
27. Nievergelt CM, Maihofer AX, Klengel T, et al: International meta-analysis of PTSD genome-wide association studies identifies sex- and ancestry-specific genetic risk loci. *Nat Commun* 2019; 10:4558
28. Stahl EA, Breen G, Forstner AJ, et al: Genome-wide association study identifies 30 loci associated with bipolar disorder. *Nat Genet* 2019; 51:793–803
29. Yengo L, Sidorenko J, Kempner KE, et al: Meta-analysis of genome-wide association studies for height and body mass index in ~700000 individuals of European ancestry. *Hum Mol Genet* 2018; 27:3641–3649
30. Johnston KJA, Adams MJ, Nicholl BI, et al: Genome-wide association study of multisite chronic pain in UK Biobank. *PLoS Genet* 2019; 15:e1008164
31. Liu M, Jiang Y, Wedow R, et al: Association studies of up to 1.2 million individuals yield new insights into the genetic etiology of tobacco and alcohol use. *Nat Genet* 2019; 51:237–244
32. Howard DM, Adams MJ, Clarke TK, et al: Genome-wide meta-analysis of depression identifies 102 independent variants and highlights the importance of the prefrontal brain regions. *Nat Neurosci* 2019; 22:343–352
33. Jansen PR, Watanabe K, Stringer S, et al: Genome-wide analysis of insomnia in 1,331,010 individuals identifies new risk loci and functional pathways. *Nat Genet* 2019; 51:394–403
34. Zheng J, Erzurumluoglu AM, Elsworth BL, et al: LD Hub: a centralized database and web interface to perform LD score regression that maximizes the potential of summary level GWAS data for SNP heritability and genetic correlation analysis. *Bioinformatics* 2017; 33:272–279
35. Ahmedani BK, Peterson EL, Hu Y, et al: Major physical health conditions and risk of suicide. *Am J Prev Med* 2017; 53: 308–315
36. Fazel S, Runeson B: Suicide. *N Engl J Med* 2020; 382:266–274
37. Hübel C, Gaspar HA, Coleman JRI, et al: Genomics of body fat percentage may contribute to sex bias in anorexia nervosa. *Am J Med Genet B Neuropsychiatr Genet* 2019; 180: 428–438
38. Haworth S, Kho PF, Holgersson PL, et al: Assessment and visualization of phenome-wide causal relationships using genetic data: an application to dental caries and periodontitis. *Eur J Hum Genet* 2021; 29:300–308
39. Zhu Z, Zheng Z, Zhang F, et al: Causal associations between risk factors and common diseases inferred from GWAS summary data. *Nat Commun* 2018; 9:224
40. Yang J, Lee SH, Goddard ME, et al: GCTA: a tool for genome-wide complex trait analysis. *Am J Hum Genet* 2011; 88:76–82
41. 1000 Genomes Project Consortium, Auton A, Brooks LD, et al: A global reference for human genetic variation. *Nature* 2015; 526: 68–74
42. de Leeuw CA, Mooij JM, Heskes T, et al: MAGMA: generalized gene-set analysis of GWAS data. *PLoS Comput Biol* 2015; 11: e1004219
43. Watanabe K, Taskesen E, van Bochoven A, et al: Functional mapping and annotation of genetic associations with FUMA. *Nat Commun* 2017; 8:1826
44. GTEx Consortium, Laboratory, Data Analysis and Coordinating Center (LDACC)–Analysis Working Group, Statistical Methods groups–Analysis Working Group, et al: Genetic effects on gene expression across human tissues. *Nature* 2017; 550: 204–213
45. Gaspar HA, Breen G: Drug enrichment and discovery from schizophrenia genome-wide association results: an analysis and visualisation approach. *Sci Rep* 2017; 7:12460
46. Wagner AH, Coffman AC, Ainscough BJ, et al: DGIdb 2.0: mining clinically relevant drug-gene interactions. *Nucleic Acids Res* 2016; 44:D1036–D1044

47. Roth BL, Lopez E, Patel S, et al: The multiplicity of serotonin receptors: uselessly diverse molecules or an embarrassment of riches? *Neuroscientist* 2000; 6:252–262
48. Wu Y, Zeng J, Zhang F, et al: Integrative analysis of omics summary data reveals putative mechanisms underlying complex traits. *Nat Commun* 2018; 9:918
49. Zhu Z, Zhang F, Hu H, et al: Integration of summary data from GWAS and eQTL studies predicts complex trait gene targets. *Nat Genet* 2016; 48:481–487
50. de Klein N, Tsai EA, Vochteloo M, et al: Brain expression quantitative trait locus and network analyses reveal downstream effects and putative drivers for brain-related diseases. *Nat Genet* 2023; 55: 377–388
51. Ge T, Chen CY, Ni Y, et al: Polygenic prediction via Bayesian regression and continuous shrinkage priors. *Nat Commun* 2019; 10:1776
52. Sollis E, Mosaku A, Abid A, et al: The NHGRI-EBI GWAS Catalog: knowledgebase and deposition resource. *Nucleic Acids Res* 2023; 51:D977–D985
53. Ikeda M, Takahashi A, Kamatani Y, et al: Genome-wide association study detected novel susceptibility genes for schizophrenia and shared trans-populations/diseases genetic effect. *Schizophr Bull* 2019; 45:824–834
54. Pfennig A, Kunzel HE, Kern N, et al: Hypothalamus-pituitary-adrenal system regulation and suicidal behavior in depression. *Biol Psychiatry* 2005; 57:336–342
55. Mann JJ, Rizk MM: A brain-centric model of suicidal behavior. *Am J Psychiatry* 2020; 177:902–916