

THE AMERICAN PSYCHIATRIC ASSOCIATION

1000 Wilson Blvd., Suite 1825, Arlington, VA 22209-3901
(888) 357-7924 (toll-free inside the U.S. and Canada) / (703) 907-7300
web site: www.psychiatry.org • e-mail: apa@psych.org



OFFICERS 2013–2014

President	Jeffrey A. Lieberman, M.D.
President-Elect	Paul Summergrad, M.D.
Treasurer	David Fassler, M.D.
Secretary	Maria A. Oquendo, M.D.

ASSEMBLY

Speaker	Melinda L. Young, M.D.
Speaker-Elect	Jenny L. Boyer, M.D.
Recorder	Glenn A. Martin, M.D.

MEDICAL DIRECTOR'S OFFICE

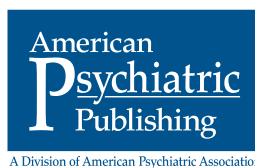
Medical Director and CEO Saul Levin, M.D., M.P.A.

BOARD OF TRUSTEES

Jeffrey Akaka, M.D.	Jeffrey Geller, M.D.	Phillip M. Murray, M.D.
Christina J. Arredondo, M.D.	Marc David Graff, M.D.	James E. Nining, M.D.
Carol A. Bernstein, M.D.	James A. Greene, M.D.	John M. Oldham, M.D.
Lara J. Cox, M.D., M.S.	Dilip V. Jeste, M.D.	Uyen-Khanh Quang-Dang, M.D.
Brian Crowley, M.D.	Judith F. Kashtan, M.D.	Gail E. Robinson, M.D.
Anita S. Everett, M.D.	Molly K. McVoy, M.D.	Erik R. Vanderlip, M.D.

PUBLISHER

Rebecca D. Rinehart



THE AMERICAN PSYCHIATRIC ASSOCIATION
Chairpersons of Councils, Commissions, Committees, and Task Forces

Standing Committees

Bylaws

Rebecca W. Brendel, M.D., J.D.

Elections

Barry K. Herman, M.D.

Ethics

Richard D. Milone, M.D.

Finance and Budget

Alan F. Schatzberg, M.D.

Audit

David Fassler, M.D.

Investment Oversight

Larry R. Faulkner, M.D.

Joint Reference

Paul Summergrad, M.D.

Membership

Jonathan M. Amiel, M.D.

Nominating

Dilip V. Jeste, M.D.

Tellers

Hind Benjelloun, M.D.

Council on Addiction Psychiatry

Frances R. Levin, M.D.

Council on Advocacy and Government Relations

Robert Paul Cabaj, M.D.

Advocacy and Litigation Funding

Renee L. Binder, M.D.

Council on Children, Adolescents, and Their Families

Louis J. Kraus, M.D.

Agnes Purcell McGavin Award

Christopher J. McDougle, M.D.

Blanche F. Ittleson Research Award

Matthew W. State, M.D.

Council on Communications

Jeffrey A. Borenstein, M.D.

Council on Geriatric Psychiatry

Robert P. Roca, M.D.

Council on Healthcare Systems and Financing

Harsh K. Trivedi, M.D.

Reimbursement for Psychiatric Care

Bruce J. Schwartz, M.D.

RBRVS, Codes and Reimbursement

Ronald M. Burd, M.D.

Council on Medical Education and Lifelong Learning

Richard F. Summers, M.D.

APA Public Psychiatry Fellowship Selection Committee

Christina V. Mangurian, M.D.

APA/SAMHSA Minority Fellowship Selection and Advisory

Altha J. Stewart, M.D.

Scientific Program

Philip R. Muskin, M.D.

Scientific Program Committee of the Institute on Psychiatric Services

Altha J. Stewart, M.D.

Task Force to Update the Ethics Annotations

Laura W. Roberts, M.D.

Vestermark Award Committee

Joel Yager, M.D.

Council on Minority Health and Health Disparities

Sandra C. Walker, M.D.

Council on Psychiatry And Law

Steven K. Hoge, M.D.

Isaac Ray/Human Rights Award

Steven K. Hoge, M.D.

Judicial Action

Paul S. Appelbaum, M.D.

Manfred S. Guttmacher Award

David A. Lowenthal, M.D.

**Council on Psychosomatic Medicine
(Consultation Liaison Psychiatry)**

Joel E. Dimsdale, M.D.

Council on Quality Care

Joel Yager, M.D.

Electronic Health Records

Steven Roy Daviss, M.D.

Steering Committee on Practice Guidelines

Michael J. Vergare, M.D.

Council on Research

Dwight L. Evans, M.D.

Psychiatric Dimensions of Disasters

Charles R. Marmar, M.D.

Research Awards

Timothy B. Walsh, M.D.

Task Force to Revise the Practice of Electroconvulsive Therapy

Sarah H. Lisanby, M.D.



For free listing of your organization's official annual or regional meeting, please send us the following information: sponsor, location, inclusive dates, type and number of continuing education credits (if available), and the name, address, and telephone number of the person or group to contact for more information. In order for an event to appear in our listing, all notices and changes must be received at least 6 months in advance of the meeting and should be addressed to:

Calendar, American Journal of Psychiatry, 1000 Wilson Boulevard, Suite 1825, Arlington, VA 22209-3901, swstrate@psych.org (e-mail).

Because of space limitations, only listings of meetings of the greatest interest to Journal readers may be included.

DECEMBER

December 5–8, 24th Annual Meeting and Symposium, American Academy of Addiction Psychiatry, Scottsdale Resort and Conference Center, Scottsdale, Ariz. www.aap.org/meetings-and-events/2013-annual-meeting (web site).

FEBRUARY 2014

February 16–20, 25th Annual Meeting of the American Neuropsychiatric Association, Seattle, Wash. www.anpaonline.org (web site).

MARCH 2014

March 12–15, 43rd Annual Meeting of the American Association of Directors of Psychiatric Residency Training, Tucson, Ariz. www.aadprt.org (web site).

MAY 2014

May 3–7, 167th Annual Meeting, American Psychiatric Association, New York, NY. Contact: APA Annual Meetings Dept., 1000 Wilson Blvd, Suite 1825, Arlington, VA 22209; (703) 907-7815 (tel); <http://www.psych.org/learn/annual-meeting> (web site).

JULY 2014

July 8–13, 28th International Congress of Applied Psychology, Palais de Congrès de Paris, France. Contact exh@icap2014.com (e-mail), www.icap2014.com (web site).

Integrated Care Systems

Psychiatric News features highly informative content on the emerging practice model of integrated care.

Learn about:

- Predominant models of integrated care and the role psychiatrists play
- Working in integrated care settings
- Payment and delivery models
- APA resources on integrated care and delivery systems initiatives

For new psychiatrists entering the field, understanding the key role of systems of care has never been more important. Research published each month in *Psychiatric Services* will help Residents play a vital role in the systems of care where they work, which is why the American Psychiatric Association provides Residents full-text online access to *Psychiatric Services* content as a member benefit.



www.appi.org • 1-800-368-5777 • Email: appi@psych.org • psychnews.psychiatryonline.org

The screenshot shows the Psychiatric News website interface. At the top right, there is a featured article titled "Integrated Care: What Does It Mean for You?" with a sub-headline "Integrated care is everywhere—in theory, at least, and increasingly in practice. APA has established a number of initiatives in this area." Below the article title, there is a navigation menu with options like "Clinical & Research", "Professional", "Government & Legal", "In the Community", and "APA & Meetings". The main content area displays the article's title and a brief introduction. On the right side, there are several smaller promotional boxes, including one for "Clinical Depression" and another for "A daily Clinical...". At the bottom right, there is a "Related Article" section with a link to "Integrated Care in Psychiatric News".



Continuing Medical Education

Three articles in this issue form the basis of a short course with questions that can be answered for up to 1 *AMA PRA Category 1 Credit*[™] each by visiting <http://psychiatryonline.org/cme.aspx> and clicking on the “American Journal of Psychiatry” tab.

CME credit is issued only online, and a paid subscription to the AJP CME course program is required.

This month’s courses appear on pages 1375–1378.

FREE AUDIO!



Have You Heard?

You can listen to highlights of *The American Journal of Psychiatry* by downloading a monthly free .mp3 audio file from our web site (<http://ajp.psychiatryonline.org/audio.aspx#>) or by subscribing to the AJP Audio podcast at iTunes or other feed reader. Presented by Deputy Editor Dr. Susan Schultz or by Executive Editor Michael Roy, each month’s audio lasts approximately 30 minutes and covers several research articles, the Treatment in Psychiatry feature, and one or two editorials.



Coming in the December 2013 issue*

THE AMERICAN JOURNAL OF PSYCHIATRY

Neuropsychological Decline in Schizophrenia From the Premorbid to the Postonset Period: Evidence From a Population-Representative Longitudinal Study

M.H. Meier, A. Caspi, A. Reichenberg, R.S.E. Keefe, H.L. Fisher, H.L. Harrington, R. Houts, R. Poulton, and T.E. Moffitt

Short-Term Use of Serotonin Reuptake Inhibitors and Risk of Upper Gastrointestinal Bleeding

Y.-P. Wang, Y.-T. Chen, C.-F. Tsai, S.-Y. Li, J.-C. Luo, S.-J. Wang, C.-H. Tang, C.-J. Liu, H.-C. Lin, F.-Y. Lee, F.-Y. Chang, and C.-L. Lu

Patient Personality and Therapist Response: An Empirical Investigation

A. Colli, A. Tanzilli, G. Dimaggio, and V. Lingiardi

Lower Gene Expression for KCNS3 Potassium Channel Subunit in Parvalbumin-Containing Neurons in the Prefrontal Cortex in Schizophrenia

D. Georgiev, D. Arion, J.F. Enwright, M. Kikuchi, Y. Minabe, J.P. Corradi, D.A. Lewis, and T. Hashimoto

*Can’t wait? Visit ajp.psychiatryonline.org/AJPinAdvance.aspx to see all articles uploaded in advance of print!

The Residents' JOURNAL

The Residents' JOURNAL

a publication of
The American Journal of Psychiatry

October 2013

Volume 8

Issue 10

Inside

- 2 Global Mental Health: Challenges and Grand Solutions
Misty Richards, M.D., M.S.
- 3 One Psychiatrist, Millions of Patients: The Odds Against Psychiatrists in Low- and Middle-Income Countries
Sarah Ramirez, ____,
Takeo Toyoshima, ____,
- 7 Lessons About Childhood Posttraumatic Stress Disorder From a Conflict Zone in Israel
Veronica Slootsky, M.D.
- 10 Curriculum for Teaching Mental Health to Primary Care Providers in Low- and Middle-Income Countries: an Adaptation of WHO's *Mental Health Gap Intervention Guide*
Hiwot Woldu, M.D.
- 13 Challenges in the Treatment of a Ghanaian Adolescent With Schizophrenia
Elizabeth Vannucci, M.D.
- 15 *Clinical Manual of Psychosomatic Medicine: A Guide to Consultation-Liaison Psychiatry, Second Edition*
David Hsu, M.D.
- 16 Test Your Knowledge
- 17 Author Information and Upcoming Themes

In This Issue



This month's issue of the *Residents' Journal* addresses the topic of global mental health. The issue begins with an editorial by our Deputy Editor, Misty Richards, M.D., M.S., on the challenges involved in and the grand solutions to global mental health. Next, Sarah Ramirez, ____, and Takeo Toyoshima, ____, provide an enlightening discussion on the odds against psychiatrists in low- and middle-income countries, largely as a result of a phenomenon called "brain drain." Veronica Slootsky, M.D., presents data on childhood posttraumatic stress disorder in a conflict zone in Israel. Hiwot Woldu, M.D., provides information on a novel curriculum for teaching mental health to primary care providers in low- and middle-income countries. Lastly, Elizabeth Vannucci, M.D., presents a case report of a Ghanaian adolescent girl with schizophrenia.

Editor-in-Chief
Arshya Vahabzadeh, M.D.
Deputy Editor
Misty Richards, M.D., M.S.
Associate Editor
David Hsu, M.D.
Guest Section Editor
Misty Richards, M.D., M.S.

Staff Editor
Angela Moore

Editors Emeriti
Sarah B. Johnson, M.D.
Molly McVoy, M.D.
Joseph M. Cerimele, M.D.
Sarah M. Foyad, M.D.
Monica Seawell, M.D.

The Residents' Journal accepts manuscripts authored by medical students, resident physicians, and fellows. To submit your paper, please visit the manuscript submission site at mc.manuscriptcentral.com/appi-ajp and either create an account or use your existing account. For manuscript type, select "Residents." Then follow the instructions to upload your manuscript. Residents who are interested in participating as Guest Section Editors should e-mail *The Residents' Journal* Editor-in-Chief Arshya Vahabzadeh at vahab1789@gmail.com.

The Residents' Journal is sent free-of-charge to all psychiatry residents. Anyone interested in being included on the distribution list should contact Angela Moore, *The Residents' Journal* staff editor at ajp@psych.org with "Subscribe to Residents' Journal" in the subject line.

To access the complete Residents' Journal archives, visit ajp.psychiatryonline.org/residents_journal.aspx

THE AMERICAN JOURNAL OF PSYCHIATRY

The most widely read psychiatric journal in the world!



- *The American Journal of Psychiatry* (AJP) latest Impact Factor is 14.721, a nearly 2 point rise from last year's 12.759 according to the recently released 2012 Journal Citation Reports® (Thomson Reuters, 2013). AJP, a publication of the American Psychiatric Association, ranks second among 135 journals in psychiatry.
 - *The American Journal of Psychiatry* is again among the top journals in psychiatry in terms of immediacy according to Thomson Scientific's Immediacy Index. This important performance metric is a good measure of how quickly a given journal's articles are cited—AJP's placement is a result of publishing articles that are relevant, covering current “hot” topics and cutting-edge research, and getting these findings to the field faster with AJP in Advance, the Journal's online-ahead-of-print publication protocol.
 - And, as it has for many years, AJP remains far and away the leader among psychiatric publications in total citations. It's 42,730 citation count was almost 5,000 citations above the next publication.
- The editors of *Journal Watch Psychiatry* announced the top psychiatry stories of 2012. Four articles from *The American Journal of Psychiatry* were honored:
 - Metformin for Antipsychotic-Induced Adverse Effects in Women With Schizophrenia (Am J Psychiatry 2012;169:813-821.)
 - Creatine Augmentation of SSRIs for Depression (Am J Psychiatry 2012;169:937-945)
 - Antipsychotics Vary in Mortality Risk in Dementia Patients (Am J Psychiatry 2012;169:71-79.)
 - Tools for Preventing Postpartum Psychosis and Mania (Am J Psychiatry 2012;169:609-615)

No other journal had more than one article in the top stories.

- A poll conducted by the BioMedical & Life Sciences Division of The Special Libraries Association identified the 100 most influential journals in all of Biology & Medicine over the last 100 years. *The American Journal of Psychiatry* was among those honored, the only psychiatry/psychology journal represented.

ISSN 0002-953X • ajp.psychiatryonline.org

For subscription information email institutions@psych.org, or call 703-907-8538



The *First* and *Last* Word in Psychiatry

www.appi.org • 1-800-368-5777 • 703-907-7322

AH1303R

Contents

- A13 Editorial Board
A15 Highlights of this issue

Editorials

- 239 **Schizophrenia, poor physical health and physical activity: evidence-based interventions are required to reduce major health inequalities**
L. McNamee, G. Mead, S. MacGillivray and S. M. Lawrie

- 241 **Electricity rendered useful for mental illness: tribute to Richard Lovett – extra**
Jesús Pérez, Gianni L. Faedda, Ross J. Baldessarini

- 242 **Towards clinically useful neuroimaging in psychiatric practice**
D. Cooper, N. Limet, I. McClung and S. M. Lawrie

- 244 **Insomnia – poems by doctors**
Helen Chiu

- 245 **Running to catch up: rapid generation of evidence for interventions in learning disability services**
R. P. Hastings

- 247 **Difficulties in implementing supported employment for people with severe mental health problems**
J. Boardman and M. Rinaldi

Special article

- 250 **Developing a reporting guideline for social and psychological intervention trials**
E. Mayo-Wilson, P. Montgomery, S. Hopewell, G. Macdonald, D. Moher and S. Grant

Review article

- 255 **Treatment for mild cognitive impairment: systematic review**
C. Cooper, R. Li, C. Lyketsos and G. Livingston

- 264 **Daswanth – fallen stars**
Raymond Cavanaugh Jr

Papers

- 265 **Pre-school hyperactivity/attention problems and educational outcomes in adolescence: prospective longitudinal study**
E. Washbrook, C. Propper and K. Sayal

- 271 **Neurobiological influences on suicide – in 100 words**
Gustavo Turecki, Keith Hawton

- 272 **Employment outcome for people with schizophrenia in rural v. urban China: population-based study**
L. H. Yang, M. R. Phillips, X. Li, G. Yu, J. Zhang, Q. Shi, Z. Song, Z. Ding, S. Pang and E. Susser

- 280 **Comparison of short- and long-term dynamic group psychotherapy: randomised clinical trial**
S. Lorentzen, T. Ruud, A. Fjeldstad and P. Høglend

- 288 **Group-based cognitive-behavioural anger management for people with mild to moderate intellectual disabilities: cluster randomised controlled trial**
P. Wilner, J. Rose, A. Jahoda, B. Stenfort Kroese, D. Felce, D. Cohen, P. MacMahon, A. Stimpson, N. Rose, D. Gillespie, J. Shead, C. Lammie, C. Woodgate, J. Townson, J. Nuttall and K. Hood

- 297 **Mental disorders and risk of accidental death**
C. Crump, K. Sundquist, M. A. Winkleby and J. Sundquist

- 303 **Anxiety and mortality risk in community-dwelling elderly people**
I. Carrière, J. Ryan, J. Norton, J. Scali, R. Stewart, K. Ritchie and M. L. Ancelin

Short report

- 310 **Pattern recognition analysis of anterior cingulate cortex blood flow to classify depression polarity**
J. R. C. Almeida, J. Mourao-Miranda, H. J. Aizenstein, A. Versace, F. A. Kozel, H. Lu, A. Marquand, E. L. LaBarbara, M. Brammer, M. Trivedi, D. J. Kupfer and M. L. Phillips

Columns

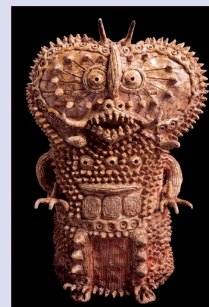
- 312 Correspondence
313 Corrections
314 Book review
314 Contents of *Advances in Psychiatric Treatment*
315 Contents of the *American Journal of Psychiatry*
316 From the Editor's desk

Cover picture

Untitled (2006–10).
Shinichi Sawada (b. 1982)

Diagnosed with autism, Sawada has created a terracotta bestiary of characters in a personal mythology, or perhaps imagined inhabitants of a distant planet or an undersea world. The spiked creatures have recently emerged in Venice (in 'The Encyclopedic Palace' at the 55th Biennale) and in London.

Private Collection, image © Wellcome Library, London. This work was among those recently displayed at Souzou: Outsider Art from Japan, at the Wellcome Collection (www.wellcomecollection.org/souzou).



We are always looking for interesting and visually appealing images for the cover of the *Journal* and would welcome suggestions or pictures, which should be sent to Dr Allan Beveridge, British Journal of Psychiatry, 21 Prescot Street, London E1 8BB, UK or bjp@rcpsych.ac.uk.